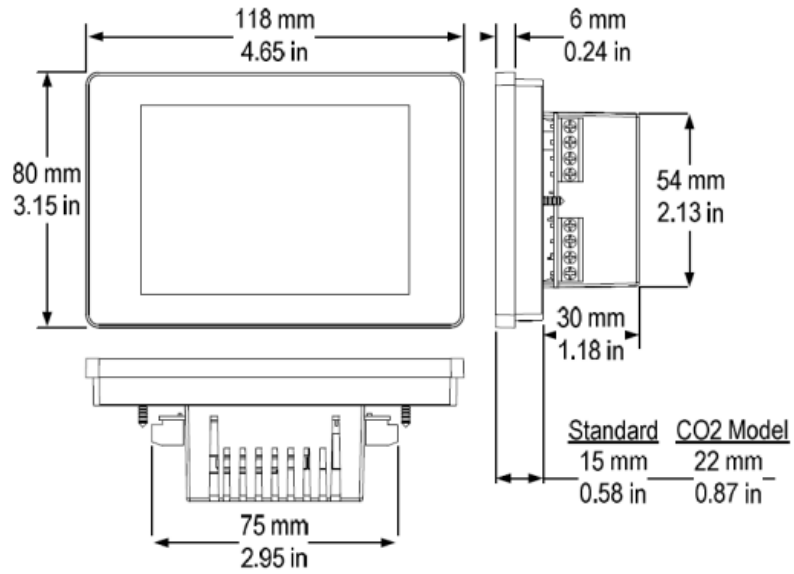


Afmetingen I-70

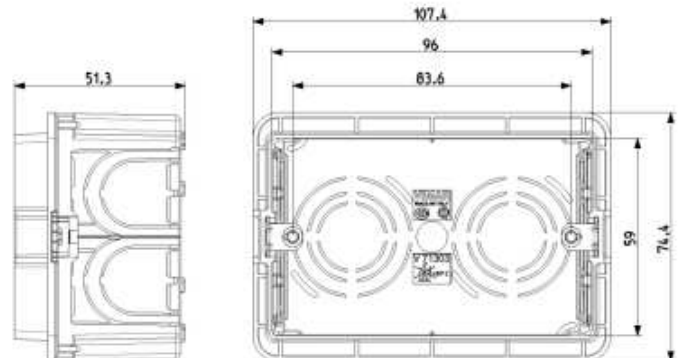
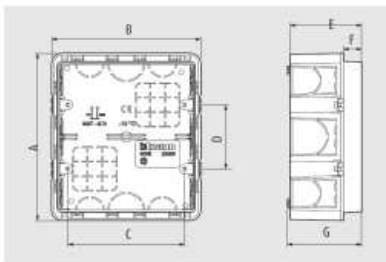
Dimensions I-70



Mogelijke inbouwdozen/Boîtes encastrables possibles:

BITICINO  
 MODEL BTI503E  
<https://catalogo.biticino.it/BTI-503E-IT>

VIMAR  
 MODEL V71303  
<https://www.vimar.com/it/it/catalog/product/index/code/V71303>



Art.	A	B	C	D	E	F	G	Profondità interna
503E	74	107	83,5	-	51,3	13	53,3	50

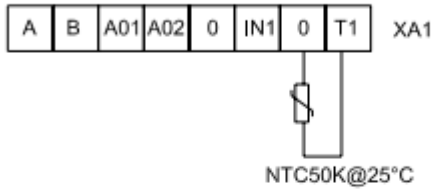
# I-70 Aansluitingen in de standaardregeling/programmeerbare INPUT's

De 0 T1 ingang kan op verschillende manieren geconfigureerd worden:

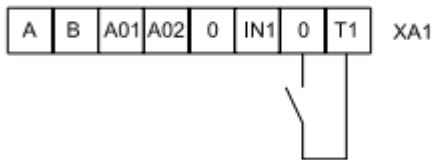
## MULTIFUNCTION T1 INPUT

P08 = 00 = NOT USED INPUT (DEFAULT)

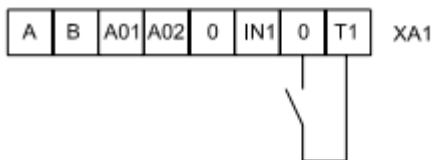
P08 = 01 = REMOTE AIR SENSOR  
AS AN ALTERNATIVE TO THE INTERNAL ONE



P08 = 03 = DOOR CONTACT  
SEE ALSO PARAMETER: P12-P13-P16-P18



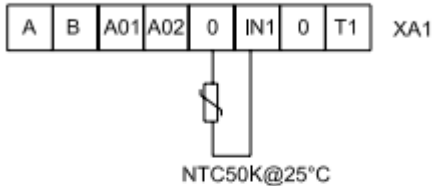
P08 = 04 = KEY-TAG CONTACT  
SEE ALSO PARAMETER: P12-P13-P16-P18



## MULTIFUNCTION IN1 INPUT

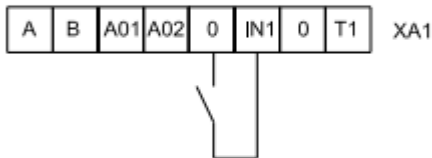
P09 = 00 = NOT USED INPUT (DEFAULT)

P09 = 01 = AUTOMATIC CHANGE OVER  
WATER TEMPERATURE SENSOR  
SEE ALSO PARAMETER: P14 - P83



AUTOMATIC CHANGE OVER WATER TEMPERATURE  
SENSOR FOR 2 PIPE SYSTEM  
WITH 3 WAY WATER VALVE FIX THE SENSOR  
BEFORE THE VALVE  
CHANGE OVER TEMPERATURE  
T < 20°C = SYSTEM IN COOLING MODE  
T > 30°C = SYSTEM IN HEATING MODE

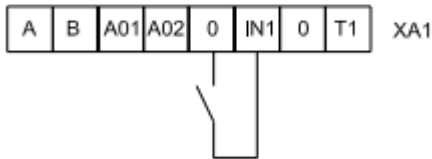
P09 = 03 = REMOTE ON/OFF  
SEE ALSO PARAMETER: P10-P11



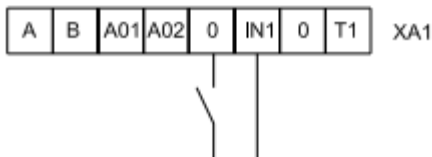
LIST

XA1 = I70 TERMINAL BOARD

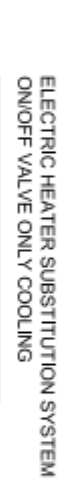
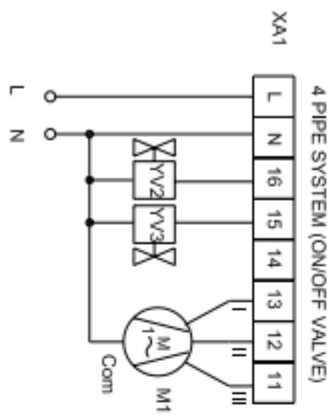
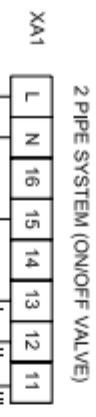
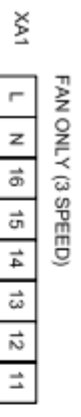
P09 = 04 = ECONOMY  
SEE ALSO PARAMETER: P10-P11-P25-P26



P09 = 05 = OCCUPANCY SENSOR (PIR)  
SEE ALSO PARAMETER: P11-P15-P16-P17-P19



**i70 STANDARD REGULATOR BASE CONNECTION  
FAN COIL SYSTEM  
NECESSARY SEE THE MANUAL FOR THE CORRECT  
SYSTEM PROGRAMMING**

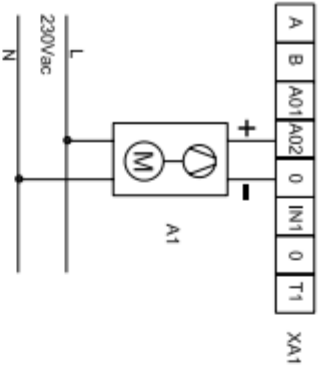


**LIST**

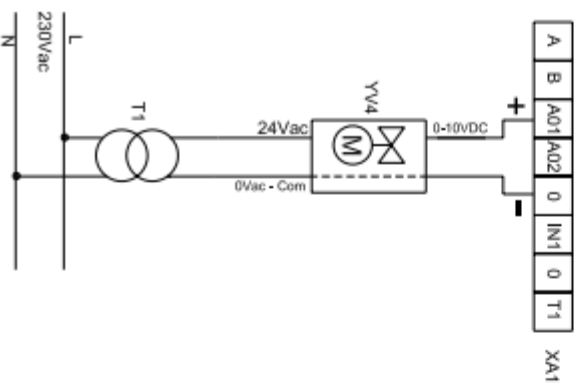
- L = PHASE 230Vac
- N = NEUTRAL - 230Vac
- M1 = FAN MOTOR - 230Vac
- I = SPEED MIN
- II = SPEED MED
- III = SPEED MAX
- Com = COMMON MOTOR
- KA1 = ELECTRIC HEATER RELAY
- XA1 = i70 TERMINAL BOARD
- YV1 = HEAT/COOL VALVE  
230Vac - ON/OFF
- YV2 = HEAT VALVE  
230Vac - ON/OFF
- YV3 = COOL VALVE  
230Vac - ON/OFF

**170 STANDARD REGULATOR BASE CONNECTION  
FAN COIL SYSTEM  
NECESSARY SEE THE MANUAL FOR THE CORRECT  
SYSTEM PROGRAMMING**

**MOTOR WITH ELECTRONIC CONTROL  
0-10 VDC**

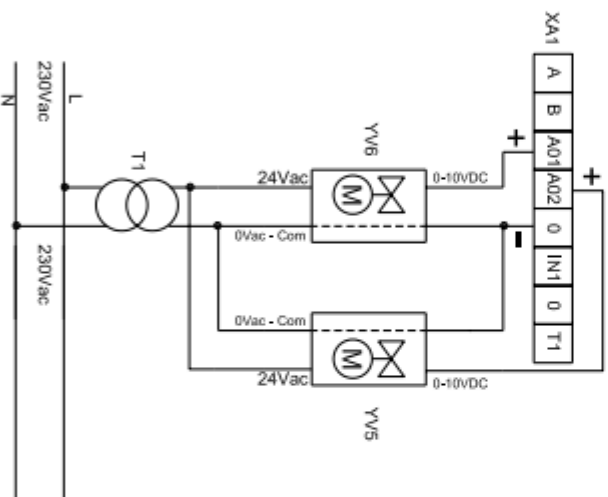


**2 PIPE SYSTEM WITH MODULATING VALVE  
0-10 VDC**



**4 PIPE SYSTEM WITH MODULATING VALVE  
0-10 VDC**

**NOTE  
1) ONLY WITH 3 SPEED MOTOR**



**LIST**

- L = PHASE 230Vac
- N = NEUTRAL - 230Vac
- T1 = TRANSFORMER 230/24 Vac  
BY THE CUSTOMER
- XA1 = 170 TERMINAL BOARD
- YV4 = HEAT/COOL VALVE  
230Vac - ON/OFF
- YV5 = HEAT VALVE  
230Vac - ON/OFF
- YV6 = COOL VALVE  
230Vac - ON/OFF