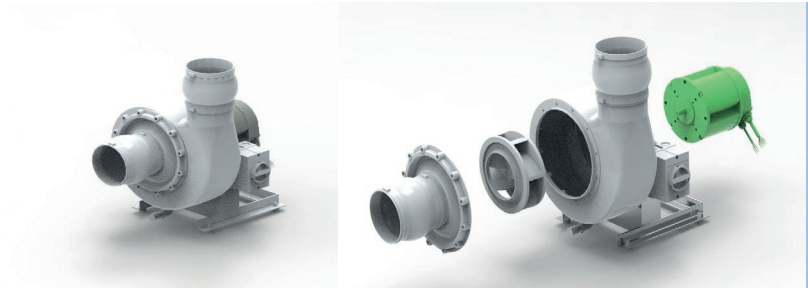


Wiring diagram WEG 0,37 kW and 1,1 kW EC-Motor

Wiring diagram for
EC-motors with
alternating current /
single-phase motors



Signal type	Condition	Resulting rotation speed value	Wire	
			1	2
DC voltage	Lower than 2 V DC	Zero (motor turned off)	Blue	Black
	From 2 to 10 V DC	$((3000-500)/8) \times (\text{Input voltage [V]} - 2) + 500$		
Direct current	Lower than 4 mA DC	Zero (motor turned off)	Red	
	From 4 to 20 mA DC	$((3000-500)/16) \times (\text{Input current [mA]} - 4) + 500$		
Frequency	Lower than 10%	Zero (motor turned off)	Brown	
	From 10 to 95%	$((3000-500)/85) \times (\text{Frequency [%]} - 10) + 500$		

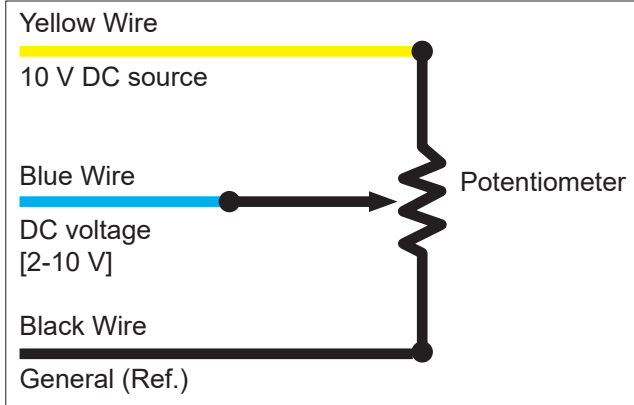
Power cable	
Function	Wire Color
L	Brown
N	Blue
PE	Green/Yellow

1. Connection only by trained and qualified electrician.
2. Before installation, check motor and motor connecting cable for damage.
3. Tighten the cable glands firmly, withdrawal of the cable must not be possible.
4. Connect the conductors to the repair switch according to the pin allocation table, **note the information given on the motor type label.**
5. The conductors must be put on correctly without squeezing or distortion in the repair switch.
6. The maximum cable length between potentiometer and EC motor is approximately 15 m.
7. The motor can be controlled via the control cable by 0-10 V, 4-20 mA or via a PWM source.

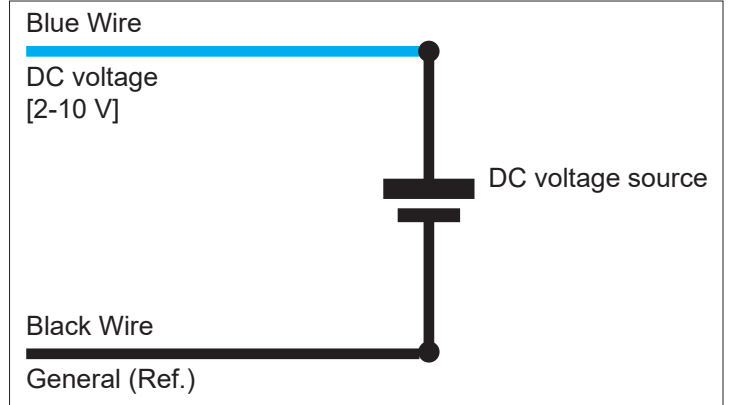


Wiring diagram WEG 0,37 kW and 1,1 kW EC-Motor

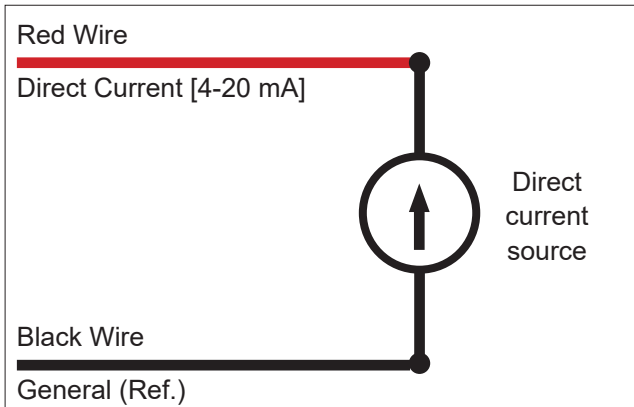
Wiring diagram control line:



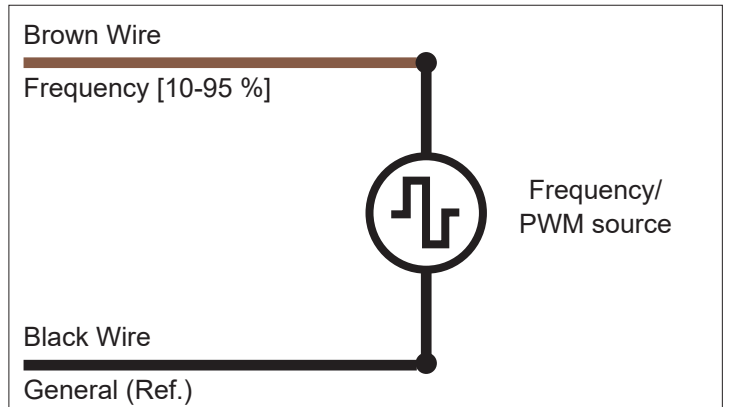
Connection with potentiometer 2-10 V





Connection building control system 2-10V



Connection via building control system 4-20 mA



Connection via building control system
PWM signal/frequency

		Electronically Commutated Motor				Oct.2018	
Model 14634998				Batch No #00020175602			
1PH 50/60HZ IEC80 IP55		S1 INS CL F ΔT 80 K SF 1.00 IE5					
V	kW	Nm	RPM	A	EFF	TENV	TEAO
220-277	1.1	5.84	1800	8.9-7.1	89.7%	NA	60°C
Control cable DC voltage[2-10V]: blue DC current[4-20mA]: red Frequency[10-95%]: brown Speed reference: white 10VDC source: yellow Common: black			Power cable Line: brown Neutral: blue GND: green/yellow		Local speed adjust SW1:speed down/off SW2:speed up/on		
Local switch adjust				looking from DE			
	SW	On	Off				
Control	1	Local	Remote				
Rotation	2	CCW	CW				
WARNING: refer to motor manual before applying power							