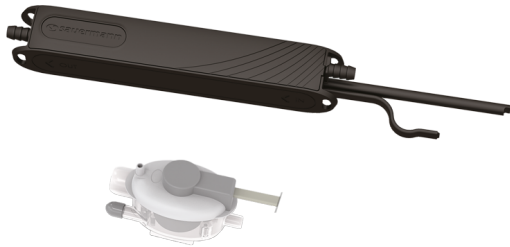


DATA SHEET

# Si-20

## Piston pump

Sauerermann® part #: SI20CE02UN23



### Fits discreetly inside the air conditioning unit

The Si-20 sets a new record for its slim casing design, allowing it to easily fit inside any type of air conditioning unit or lineset cover. Offering best-in-class performance and sound levels for a mini pump of its size, this model delivers unmatched reliability. The patented piston pump technology, which offers a high degree of energy efficiency, is designed to remove condensates from air conditioning units of up to 20 kW.

### Benefits



#### Silent

- Operates at just 19 dBA, delivering a record power-to-noise ratio.
- Noise levels well below even the quietest air conditioning units.
- Tube comes with insulating foam to reduce vibration.



#### Reliable and eco-friendly

- Built to withstand any type of environment.
- Capable of discharging condensates containing small particles.
- Designed as a possible replacement for most market-standard mini pumps.
- Can be taken apart for recycling of plastic parts and components.



#### Easy to install

- The slimmest mini pump money can buy: cross-section of just 27 x 27 mm.
- Compatible with all market-standard air conditioning units.
- Fits inside lineset covers and fixes to cooling tubes with four side attachments for double wire clamps.
- One-click detection unit attachment and detachment with offset connection point for easy installation and maintenance.
- Installation made even easier with fasteners, plates, pre-installed anti-siphon device and other accessories included.



#### Ultra-powerful

- Record size-to-weight ratio: maximum flow rate of 20 litres per hour, for air conditioning units of up to 20 kW.
- Patented piston pump technology for exceptional efficiency.

### Kit content



- Piston pump with 1.5 m power cable: 2 power wires, 2 safety contact wires.
- 1 detection unit (SI2958, 1.5 m power cable).
- Clear PVC tube int. Ø 6 mm - L 60 mm, fitted with pre-mounted "Drain Safe Device" connector.
- PVC tube int. Ø 6 mm - L 0.63 m, fitted with insulating foam.
- Detection unit installation kit:
  - rubber elbow 90° int. Ø 15 mm x L 152 mm
  - vent tube int. Ø 4 mm x L 75 mm
  - mounting rail
  - adhesive
  - 3 double wire clamps
  - 3 tie wraps, 2.5 x 200 mm
- 1 attachment unit: 1 mounting plate + 1 rubber damper


## Technical specifications

Max. flow rate	20 l/h
Max. suction head	3 m
Max. discharge head	10 m - flow rate = 4 l/h
Max. pressure	14 m - flow rate = 0 l/h
Sound level	19 dBA
Mains supply	230 V~ 50 Hz - 15 W
Insulation class	□ (double insulation)
Detection levels	On: 16 mm; Off: 11 mm; Safety: 19 mm
Safety switch	NC 6 A resistive - 250 V
Thermal protection (overheating)	115°C (auto-reset)
Max. condensate temperature	35°C
Operating cycle	100 % - Continuous duty
Protection	IPX2
Safety standards	CE, EAC and UKCA
RoHS directive	Compliant
WEEE directive	Compliant
Pump dimensions	L 180 x W 27 x H 27 mm
Packaging	L 173 x W 160 x H 72 mm
Weight (including box)	0.46 kg
Masterpack	6 pieces

## Applications

For use with any air conditioning unit of up to 20 kW

## Accessories

Name	#Part
 Clear PVC hose int. Ø 6 mm (1/4")	ACC00909: 5 m ACC00910: 50 m ACC00914: Braided, 50 m



5 self-sealing fittings for hose  
Ø int. 6 mm (1/4")

ACC00919

