

Desktop Type RF Smart Thermostat for wall-hung boiler

Super strong RF signal for sub1G Communication



English



Version:1.1(11/2023) 71.04.00306

Personalized Scanning QR Code

Scan the corresponding QR code according to your needs to obtain the content

Manual

- Scan the QR code to obtain the electronic manual in multi-languages.
- Scannen Sie den QR-Code, um das elektronische Handbuch in mehreren Sprachen zu erhalten.
- Escanee el Código QR para obtener un manual electrónico multilingüe.
- Zeskanuj kod QR, aby uzyskać elektroniczną instrukcję w wielojęzycznym skanowaniu
- двухмерных кодов для получения многоязычных электронных руководств.

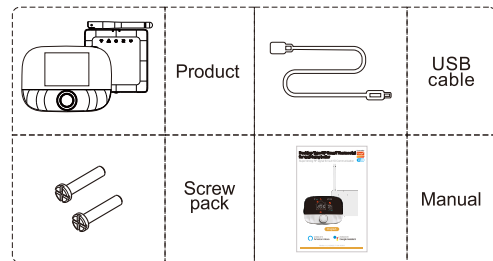
Operation Video

- Scan the QR code to obtain the video of equipment operation steps.
- Scannen Sie den QR-Code, um das Video der Geräteschritte zu erhalten.
- Escanee el Código QR para obtener el video de los pasos de operación del dispositivo.
- Zeskanuj kod QR, aby uzyskać wideo kroków obsługi sprzętu.
- Сканируйте QR - код, вы получаете видео шагов работы устройства.

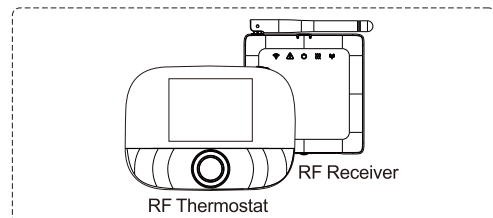
RF Pairing Video

- Scan QR code to obtain RF pairing operation steps video of equipment.
- Scannen Sie QR-Code, um HF-Pairing-Operationsschritte Video der Ausrüstung zu erhalten.
- Escanee el Código QR y obtenga el video de los pasos de operación de emparejamiento de radiofrecuencia del dispositivo.
- Zeskanuj kod QR, aby uzyskać kroki operacyjnej parowania RF wideo sprzętu.
- Сканируйте QR - код и получите видео шагов работы радиочастотной пары устройства.

Standard Accessories



Product Overview



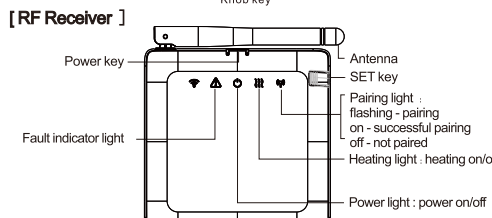
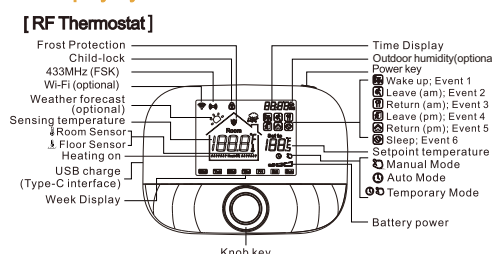
This set controls the temperature of the room by controlling the wall-hung boiler. As long as you install the RF Receiver device near the wall-hung boiler, even if the RF Thermostat is placed in the living room or room (with an open distance of 200 meters), the RF Receiver can be controlled by the RF Thermostat.

Product Overview

[RF Thermostat]	
Power supply	2 x 1.5 V alkaline AA batteries / USB powered (Type-C interface)
Temp. setting range	5~95°C
Operation temperature range	-5~50°C
Measurement accuracy	0.1°C
Setting temp. accuracy	0.5°C
Transmission distance	≤200m in the open air
Protection level	IP20
Wireless frequency	433MHz (FSK) / 433MHz (Bidirectional FSK)

[RF Receiver]	
Power supply	AC100~240V; 50/60Hz
Device power consumption	1W max
Ambient temperature	-5~50°C
Transmission distance	≤200m in the open air
Wireless frequency	433MHz (FSK) / 433MHz (Bidirectional FSK)

Display Symbols



RF Thermostat operating instructions

Function	Steps
Power on/off	Press "power key" shortly to turn on/off the thermostat.
Weekly programming	Press "knob key" for 3 seconds to edit Weekly programming.
Temperature control mode	Press "knob key" shortly to switch manual/auto mode.
Temperature setting	Rotate "knob key" to change setting temperature by 0.5°C.

RF Thermostat operating instructions

Function	Steps
Child-lock	Press "knob key" + "power key" for 3 seconds to activate/deactivate child-lock.
Weekly programming	Press "knob key" for 3 seconds to edit weekly programming. After plugging in the Type-C USB cable, in the power-on state, press "power key" fastly twice to backlight control setting. * You can adjust standby mode brightness from 0% to 100% on the Smart Life APP.
Backlight Control	Under power-off, press "knob key" + "power key" for 3 seconds to pairing mode.
Pairing mode	Under power-off, press "power key" for 3 seconds to Wi-Fi config.
Wi-Fi config	When the voltage is less than 2.3 V, the small icon of battery power flickers, it is recommended to replace the new battery as soon as possible before use.
Low power reminder	

Weekly programming

Press "knob key" for 3 seconds to edit weekly programming.

Events	Symbols	Time		Temperature	
		Default value	Modify	Default value	Modify
Workdays	1	☀	06:00	20°C (68°F)	Rotate knob
	2	☁	08:00	15°C (59°F)	
	3	☀	11:30	15°C (59°F)	
	4	☁	12:30	15°C (59°F)	
	5	☀	17:00	22°C (72°F)	
Weekends	1	☀	08:00	15°C (59°F)	Rotate knob
	2	☁	22:00	20°C (68°F)	

RF Thermostat advanced setting

* Usually for Professional Technicians

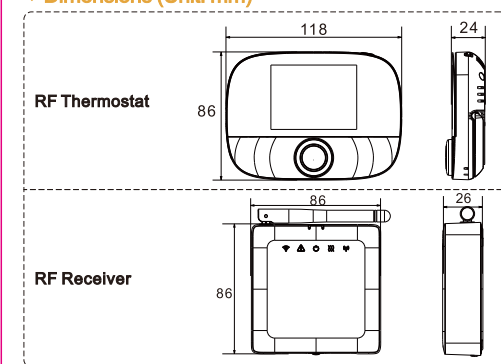
During power-off, press "Knob key" for 3 seconds to enter advanced setting mode, then repress "Knob key" to switch to next mode. Press "power button" to save and exit advanced setting mode.

Code	Meaning	Rotate knob key "⊙"	Default value
01	Temp. calibration	-9.9~9.9°C (-9~9°F)	0°C
02	Temp. Dif.	0.5~10°C (1~10°F)	±1°C
03	Temp. upper limit	5~95°C (41~199°F)	50°C
04	Temp. lower limit	5~47°C (41~117°F)	5°C
05	Frost protection	ON: frost protection on OFF: frost protection off	OFF
06	Temperature unit	°C/°F	°C
09	Weekly programming setting	12345: 5/2 week mode 123456: 6/1 week mode 1234567: 7/0 week mode	12345
12	Child-lock	00: Child-lock inactivate when screen off, lock all when child-lock activate 01: Child-lock activate when screen off, lock all when child-lock activate 02: Child-lock activate when screen off, lock all except Fan Speed, Up and Down when child-lock activate 03: Child-lock activate when screen off, lock all except Power on/off when child-lock activate	00
13	Power-on-reset	00: Power OFF 01: Power ON 02: The last status before power loss	02
19	Restore factory settings	Press "⊙" for 3 seconds to reset	/

RF Receiver operating instructions

Function	Steps	Display state
Power on/off	Press "Power key" shortly	"⊙" Power light is always on/off
RF Pairing	During power-on, press "SET key" for 3 seconds	"⊙" Power light is on+ "⊙" Pairing light flashing quickly
RF Pairing successful		Buzzer beeps + "⊙" pairing light is on
Forced output	During power-on, press "Power key" for 3 seconds	"⊙" Power light is on+ "⊙" Heating light is blinking
	Short press "Power key" to exit the forced output, return to the shutdown state	"⊙" Heating light is off
Restore factory settings	During power-off, press "Power key" for 3 seconds	"⊙" "⊙" "⊙" four lights flash once at the same time

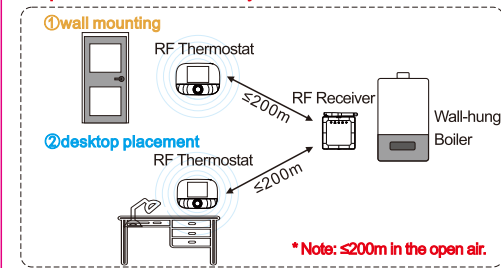
Dimensions (Unit: mm)



Installation location

The installation distance between the thermostat and the receiver does not exceed 200m (the distance can be judged according to the actual network coverage)

* Tip: There are two main ways to install the RF thermostat

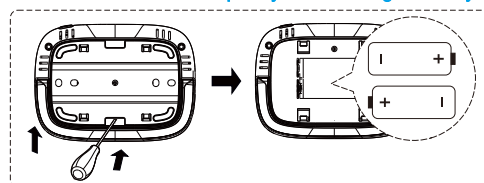


RF Thermostat mounting steps

* Note: two power supply methods
We suggest using both power supply methods simultaneously

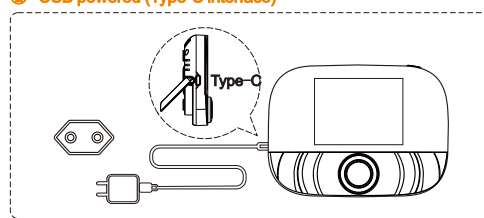
① 2 x 1.5 V alkaline AA batteries

- * Note:
- ① It is recommended to use brand new 1.5 V alkaline AA batteries.
- ② Please ensure the correct polarity when installing the battery.



- Insert a screwdriver into the notch on the back of the thermostat, pry open the base and panel frame, and then put the battery into the battery compartment of the device;
- After inserting the battery, close the back cover to complete the installation.

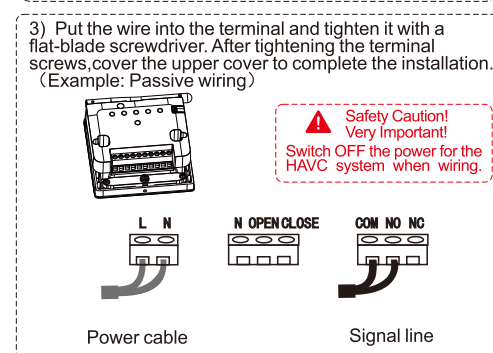
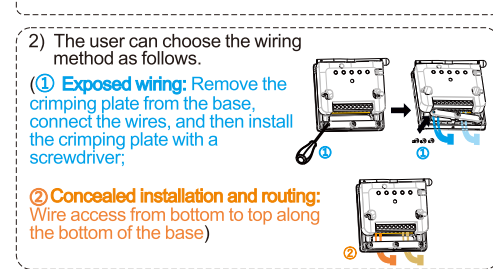
② USB powered (Type-C interface)



Use Type-C cable to power the device

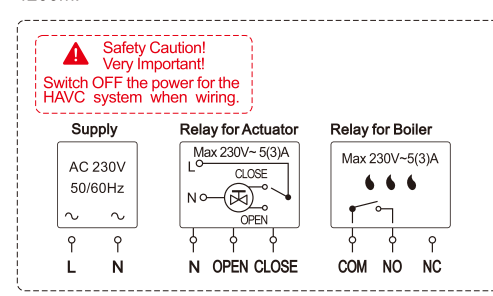
RF Receiver installation steps

- After unscrewing the screws, release front cover by inserting a head screw-driver into bottom crack.
- The user can choose the wiring method as follows.
 - ① Exposed wiring: Remove the crimping plate from the base, connect the wires, and then install the crimping plate with a screwdriver;
 - ② Concealed installation and routing: Wire access from bottom to top along the bottom of the base)
- Put the wire into the terminal and tighten it with a flat-blade screwdriver. After tightening the terminal screws, cover the upper cover to complete the installation. (Example: Passive wiring)



RF Receiver wiring diagram

The thermostat operates in full capacity in areas with the altitude of less than 2500m above sea level. Power rating of external load should be less than or equal to 80% rated power of the thermostat in areas with altitude of 2500m to 4200m.

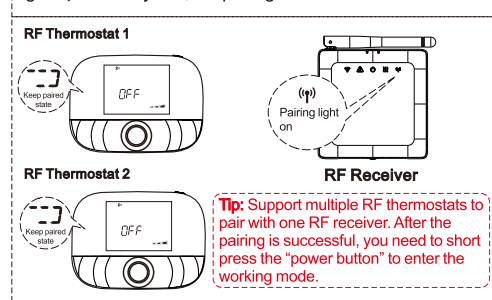


Pairing steps

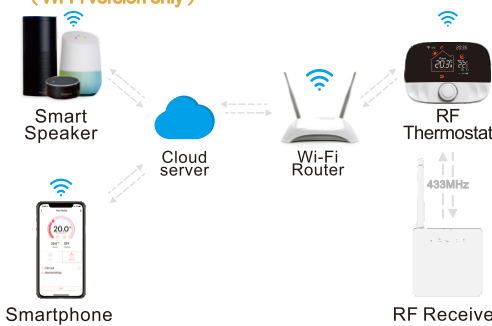
- During power-on, press "SET key" for 3 seconds, pairing light "⊙" flashing, the receiver enters the pairing state.
- During power-off, press "power button" + "knob key" for 3 seconds, the thermostat enters the pairing state.

Pairing steps

③ When the receiver's buzzer beeps once, and the pairing light "⊙" is always on, the pairing is successful.



APP Remote Control And Voice Control (Wi-Fi version only)



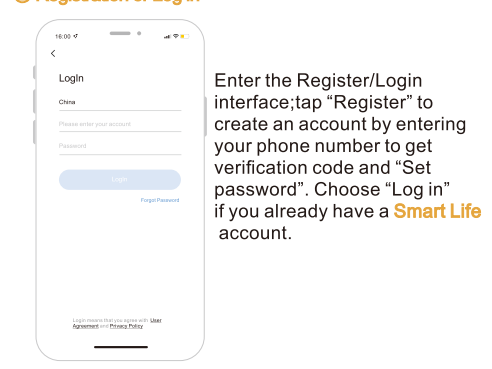
Preparation for Use (Wi-Fi version only)

① Download Smart Life App



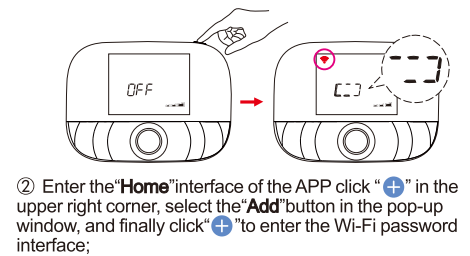
Scan the QR code above or search "Smart Life" on App Store and Google Play to download the Smart Life APP.

② Registration or Log in



Wi-Fi config (Wi-Fi version only)

① In the OFF state, long press the "power button" for 3 seconds, when the screen flashes "⊙" and "⊙", the thermostat Enter the state of distribution network;



Voice control (Wi-Fi version only)

After waking up the speaker, you can say:

- Amazon Alexa: Alexa,**
- * Turn on the HEATER
 - * Turn off the HEATER.
 - * Make the HEATER cooler in here.
 - * Make the HEATER warmer in here.
 - * What is the temperature of the HEATER?
 - * Turn on child lock for the HEATER
 - * Turn off child lock for the HEATER

- Google Assistant: OK google,**
- * Turn on the HEATER
 - * Turn off the HEATER.
 - * Set the HEATER to 26 degree
 - * Drop the HEATER by 1 degree
 - * Raise the HEATER by 1 degree
 - * Turn on child lock for the HEATER
 - * Turn off child lock for the HEATER

*Attention: "HEATER" is the device name, you can also name it yourself. The temperature unit of thermostat and smart speaker must be identical.