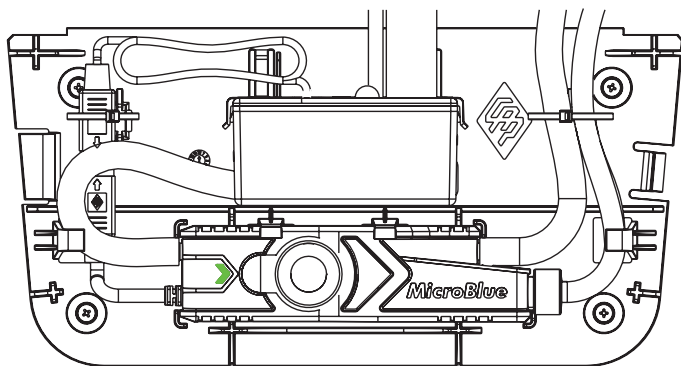


MICROBLUE®

FASCIA KIT



(PUMP NOT INCLUDED)

S30-618/2



CHARLES AUSTEN
PUMPS LTD

3 YEAR
WARRANTY

WARNING:

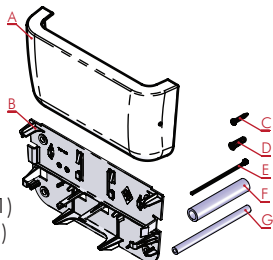


- Installation must be performed by suitably qualified service engineer only.
- Ensure relevant mains power is isolated prior to installation and maintenance.
- Do not use if product is damaged.
- Product is for indoor use only.
- The unit must be installed level.
- Installation of the MICROBLUE® pump must be made in accordance with the MicroBlue instruction manual.
- Following installation ensure an operational test is conducted as per the MICROBLUE® instruction manual.

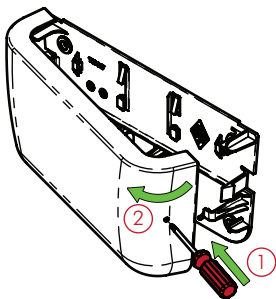


IN THE BOX

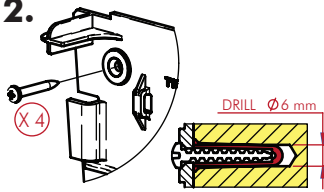
- A. Cover (x 1)
- B. Base Plate (x 1)
- C. Mounting screws (x 4)
- D. Wall Plug (x 4)
- E. Cable Tie (x 1)
- F. A/C Outlet Tube 100mm (x 1)
- G. Connector Tube 140mm (x 1)



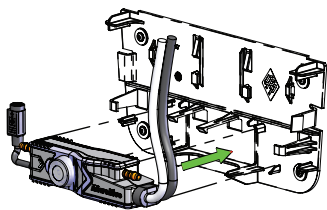
1.



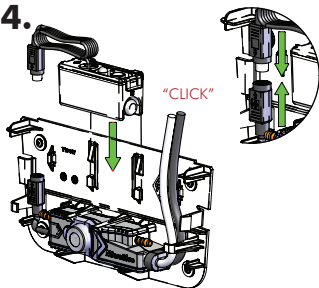
2.



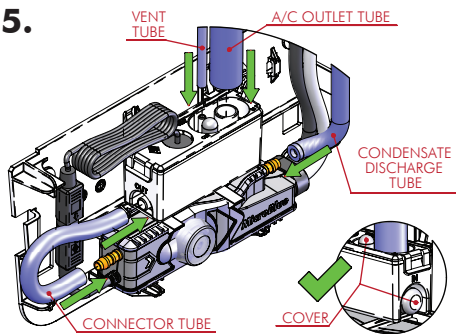
3.



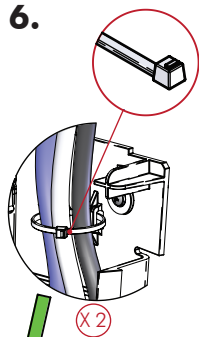
4.



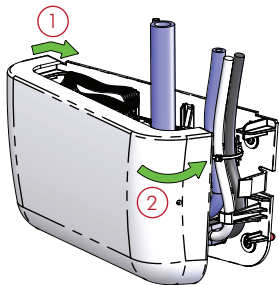
5.



6.



7.



8.

