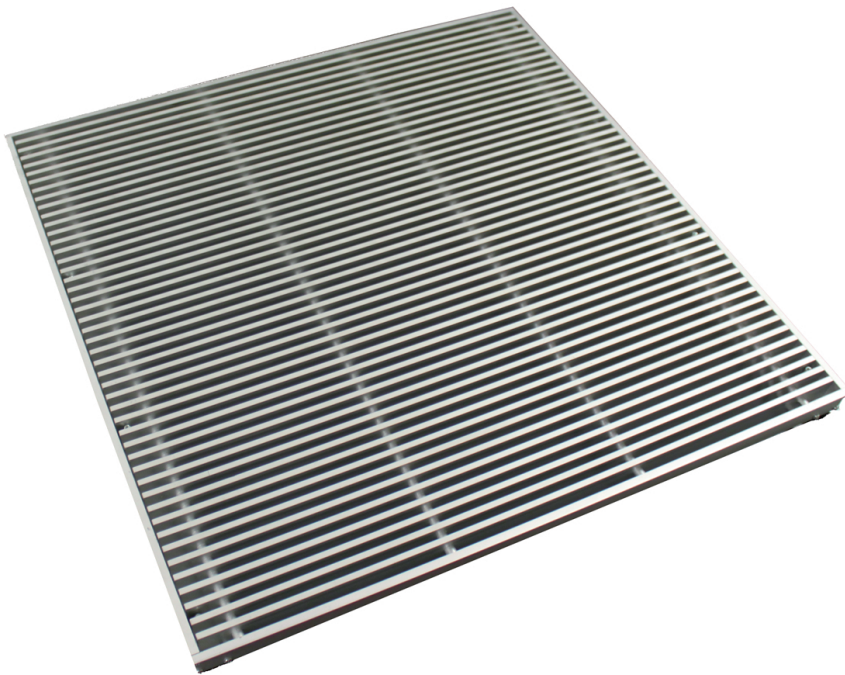


- Floor grilles
- Aluminium
- Anodized natural finish
- Fixed blades 15°



## Floor grilles for technical floor type ALG-TF-0

Aluminium grilles for technical floors with fixed blades and removable inner part. Standard delivered with overall dimensions of 599 x 599 mm and floorthickness adjustable from 35 mm to 50 mm

### Brand

- Cairox

### Application

- Grilles **ALG-TF** are used for air supply and air exhaust in ventilation and air conditioning systems. To lay in technical floor

### Material

- Aluminium grille with aluminium frame

### Colour

- Natural aluminium finish
- Other colours available upon request

### Composition

- Frame and blades made of aluminium
- Support frame made of aluminium
- Support screws to set the height of the grille
- Blade pitch of 12,5mm

### Mounting

- To be placed in between floor tiles into the floor structure or on support feet

### Accessories

- Volume control damper available upon request

### Other available products

- Grille **ALG-TF-15** with 15° deflection

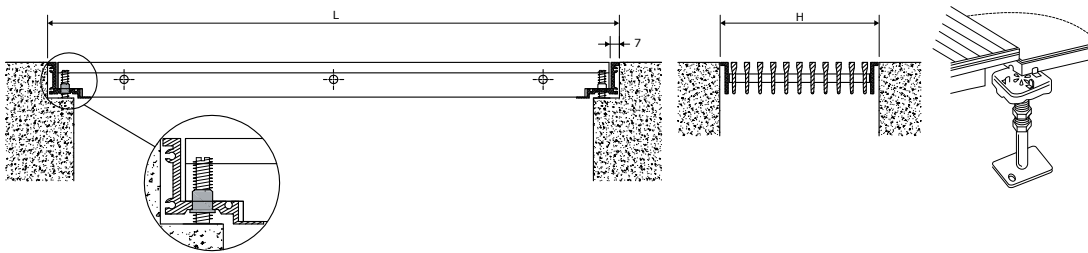
**Text for tender**

- The air supply grilles are layed in the technical floor, have fixed blades and are supplied with a volume control damper.
- Anodized natural colour finish
- Cairox type **ALG-TF-0**

**Order example**

- **ALG-TF-0 , 600 X 600**

Explanation

**ALG-TF-0** = Grille type**600** = Length**600** = Height

Quick selection			600 x 600
Q	ALG-TF-0	Ak	0.1602
300		Vk	0.5
		Y0,25	1.2
		Ps	0
		Lw(A)	<20
400		Vk	0.7
		Y0,25	1.6
		Ps	0
		Lw(A)	<20
600		Vk	1
		Y0,25	2.4
		Ps	1
		Lw(A)	<20
800		Vk	1.4
		Y0,25	3.2
		Ps	1
		Lw(A)	<20
1000		Vk	1.7
		Y0,25	4
		Ps	2
		Lw(A)	<20
2000		Vk	3.5
		Y0,25	7.9
		Ps	7
		Lw(A)	33
3000		Vk	5.2
		Y0,25	11.9
		Ps	16
		Lw(A)	43
4000		Vk	6.9
		Y0,25	15.8
		Ps	28
		Lw(A)	51

**Symbols and specifications**

- LxH = Width L and height H in mm
  - Q = Air volume in m<sup>3</sup>/h
  - Ak = Effective surface (free area) in m<sup>2</sup>
  - Vk = Average effective velocity through the grille in m/s
  - Y0,25 = Vertical throw in m at an end velocity Vt of 0.25 m/s
  - Ps = Static pressure loss in Pa
  - Lw(A) = Acoustic power in dB(A)
- The values are given for isothermal supply air.
  - The pressure losses Ps are given for grilles without damper or with fully opened damper.
  - The acoustic powers Lw(A) are given for grilles without damper or with fully opened damper without room attenuation. Acoustic powers below 20dB(A) are mentioned as "<20" in the tables.
  - For all other special requirements, please contact our engineering office.

## Placement instruction

