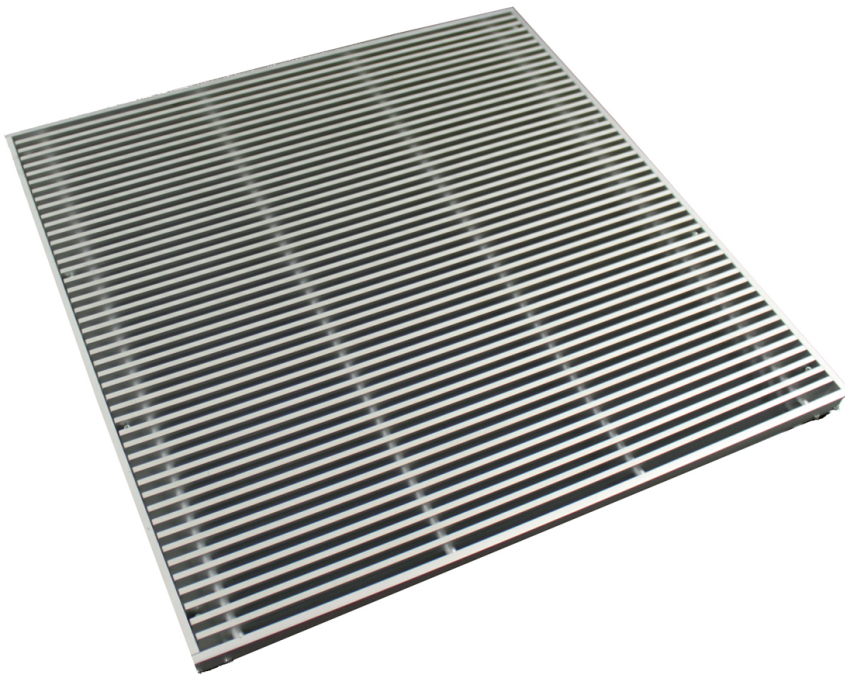


- Floor grilles
- Aluminium
- Anodized natural finish
- Fixed blades 15°



Floor grilles for technical floors type ALG-TF-15

Aluminium grilles for technical floors with fixed blades and removable inner part. Standard delivered with overall dimensions of 599 x 599 mm and floorthickness of 40 mm (other thicknesses available upon request).

Brand

- Cairox

Application

- Grilles **ALG-TF** are used for air supply and air exhaust in ventilation and air conditioning systems. To lay in technical floors

Material

- Aluminium grille with aluminium frame

Colour

- Natural aluminium finish
- Other colours available upon request

Composition

- Frame and blades made of aluminium with 15° deflection
- Support frame made out of galvanized steel
- Support screws to set the height of the grille

Mounting

- To be placed in between floor tiles into the floor structure or on support feet

Accessories

- Opposite blade volume control damper upon request

Other available products

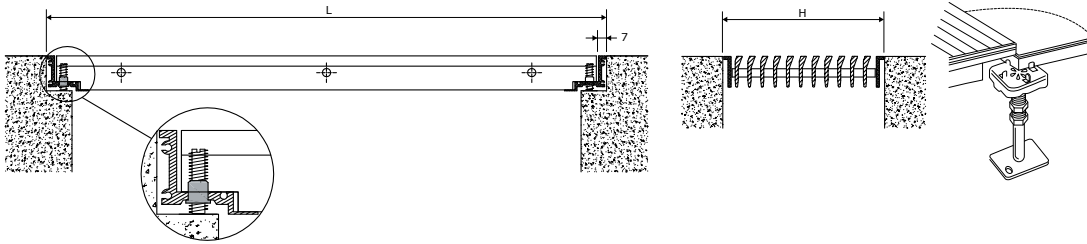
- Grille **ALG-TF-0** without deflection

Text for tender

- The air supply grilles are layed in the technical floor, have fixed blades and are supplied with a volume control damper.
- Anodized natural colour finish
- **Cairox** type **ALG-TF-15**

Order example■ **ALG-TF-15 , 600 X 600**

Explanation

ALG-TF-15 = Grille type**600** = Length**600** = Height

Quick selection			600 x 600
Q	ALG-TF-15	Ak	0.1602
300		Vk	0.5
		Y0,25	1.2
		Ps	0
		Lw(A)	<20
400		Vk	0.7
		Y0,25	1.6
		Ps	0
		Lw(A)	<20
600		Vk	1
		Y0,25	2.4
		Ps	1
		Lw(A)	<20
800		Vk	1.4
		Y0,25	3.2
		Ps	1
		Lw(A)	<20
1000		Vk	1.7
		Y0,25	4
		Ps	2
		Lw(A)	<20
2000		Vk	3.5
		Y0,25	7.9
		Ps	7
		Lw(A)	33
3000		Vk	5.2
		Y0,25	11.9
		Ps	16
		Lw(A)	43
4000		Vk	6.9
		Y0,25	15.8
		Ps	28
		Lw(A)	51

Symbols and specifications

- LxH = Width L and height H in mm
 - Q = Air volume in m³/h
 - Ak = Effective surface (free area) in m²
 - Vk = Average effective velocity through the grille in m/s
 - Y0,25 = Vertical throw in m at an end velocity Vt of 0.25 m/s
 - Ps = Static pressure loss in Pa
 - Lw(A) = Acoustic power in dB(A)
- The values are given for isothermal supply air without coanda effect.
 - The pressure losses Ps are given for grilles without damper or with fully opened damper.
 - The acoustic powers Lw(A) are given for grilles without damper or with fully opened damper without room attenuation. Acoustic powers below 20dB(A) are mentioned as "<20" in the tables.
 - For all other special requirements, please contact our engineering office.

Placement instruction

