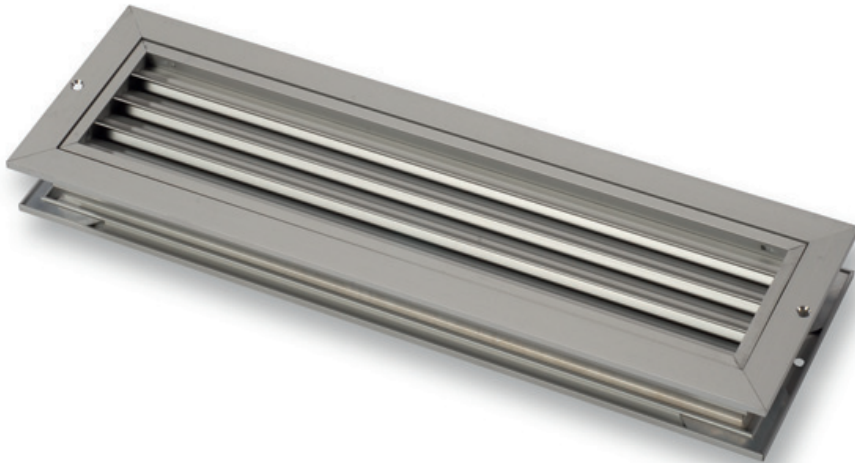


- Door grilles
- Aluminium
- Anodized natural color
- With counterframe

CAIROX



Aluminium door or transfer grilles type DRR

Aluminium door or transfer grilles for placement in doors and walls from 30 upto 54 mm.

Grille with an average free area of 39%

Brand

- Cairox

Application

- For air distribution between 2 rooms

Material

- Aluminium anodized natural finish

Colour

- Anodized natural finish
- Other colours available upon request

Composition

- Fixed non-vision V-shaped blades
- Counterframe

Mounting

- Visible screw mounting with counterframe

Order example

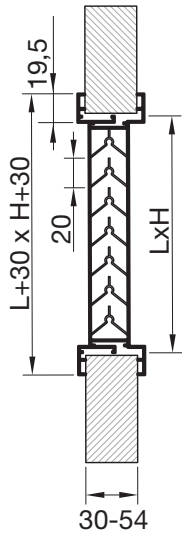
- **DRR, 600, 200**

Explanation

DRR = Grille type

600 = Length (see table)

200 = Height (see table)



Quick selection											
Q	L x H	200x100	300x100	400x100	500x100	300x200	400x200	600x200 400x300	500x300	600x300	600x400
60	Ak	0.0078	0.0117	0.0156	0.0195	0.0234	0.0312	0.0468	0.0585	0.0702	0.0936
	Vk	2.14	1.42	1.07							
	Ps	14.10	6.30	3.60							
	Lw(A)	19	9	1							
80	Vk	2.85	1.90	1.42	1.14						
	Ps	25	11.10	6.30	4						
	Lw(A)	28	18	10	4						
	Vk	3.56	2.37	1.78	1.42	1.19	0.89				
100	Ps	39.10	17.40	9.80	6.30	4.30	2.40				
	Lw(A)	35	24	17	11	6	-				
	Vk		3.56	2.67	2.14	1.78	1.34				
	Ps		39.10	22	14.10	9.80	5.50				
150	Lw(A)		37	29	23	19	11				
	Vk			3.56	2.85	2.37	1.78	1.19			
	Ps			39.10	25	17.40	9.80	4.30			
	Lw(A)			38	32	27	20	9			
200	Vk				3.56	2.97	2.23	1.48	1.19		
	Ps				39.10	27.20	15.30	6.80	4.30		
	Lw(A)				39	34	27	16	10		
	Vk							1.78	1.42	1.19	
250	Ps							9.80	6.30	4.50	
	Lw(A)							22	16	11	
	Vk							3.56	2.67	1.90	1.58
	Ps							39.10	22	14.10	9.80
300	Lw(A)							40	32	22	11
	Vk								3.56	2.37	1.90
	Ps								39.10	17.40	11.10
	Lw(A)								41	30	25
400	Vk								2.97	2.37	1.98
	Ps								27.20	17.40	12.10
	Lw(A)								37	31	27
	Vk									3.56	2.85
500	Ps								39.10	25	17.40
	Lw(A)								43	37	32
	Vk										2.37
	Ps										17.40
600	Lw(A)										25
	Vk										
	Ps										
	Lw(A)										

Selection table		
DRR	Q (2Pa) [m³/h]	Q (10Pa) [m³/h]
200 X 100	22	50
300 X 100	33	75
300 X 200	67	151
400 X 100	45	101
400 X 200	90	202
400 X 300	135	303
500 X 100	56	126
500 X 300	169	379
600 X 200	135	303
600 X 300	203	455
600 X 400	271	606

Symbols and specifications

- Ps = Static pressure loss in Pa
- Q = Air Volume in m³/h
- L x H = Hole in wall or door in mm
- Vk = Effective air velocity true the grille in m/s
- Ak = Effective area in m²
- Lw(A) = Acoustic power in dB(A)