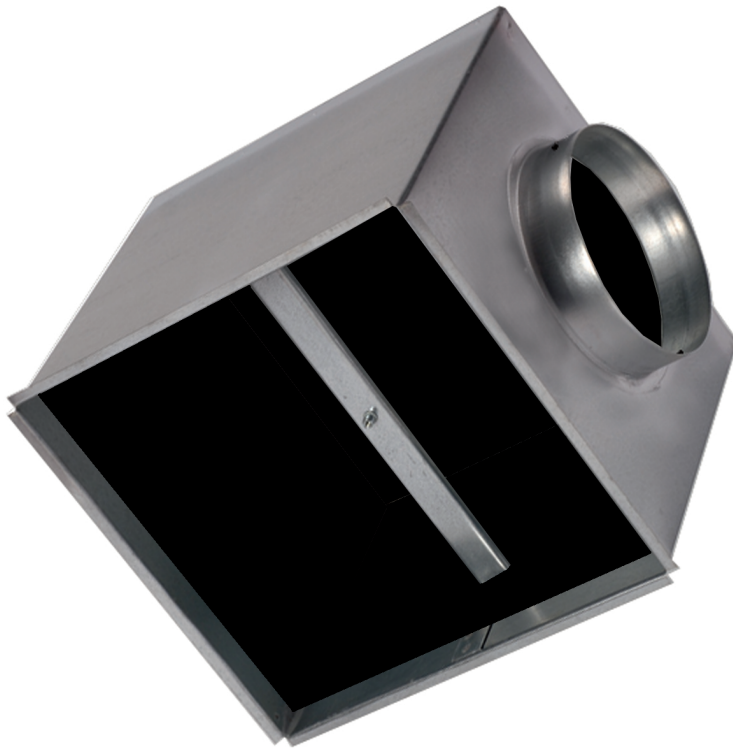


- Plenum boxes
- Square
- Steel



Insulated plenum boxes for APW-4 & PS/APW-4 type REF ISO

Internally insulated galvanized steel plenum boxes with crossbar and circular side entry spigot.

Brand

- Cairox

Composition

- Insulation thickness: 6 mm

Accessories

- Circular regulating valve, type **CRC**

Order example

- **REF ISO 444 + CRC 200**

Explanation

REF ISO = Plenum box type, insulated

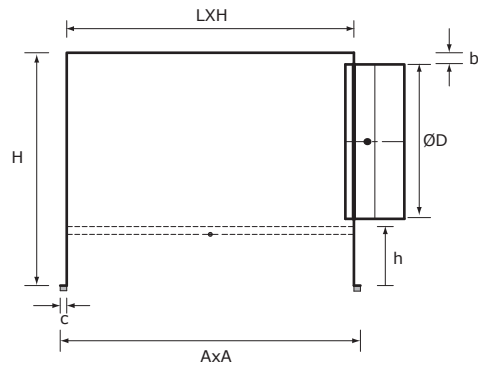
444 = Size according to diffuser

Accessory

CRC 200 = Regulating valve for plenum box connection Ø200

Other available products

- Non-insulated plenumboxes **REF**



Dimensions							
REF ISO	H [mm]	b [mm]	LxH [mm]	ØD [mm]	AxA [mm]	h [mm]	c [mm]
294	260	15	264x264	125	284x284	90	10
369	290	15	339x339	160	359x359	90	10
444	330	15	414x414	200	434x434	90	10
519	380	15	489x489	250	509x509	90	10
595	450	15	565x565	315	585x585	90	10