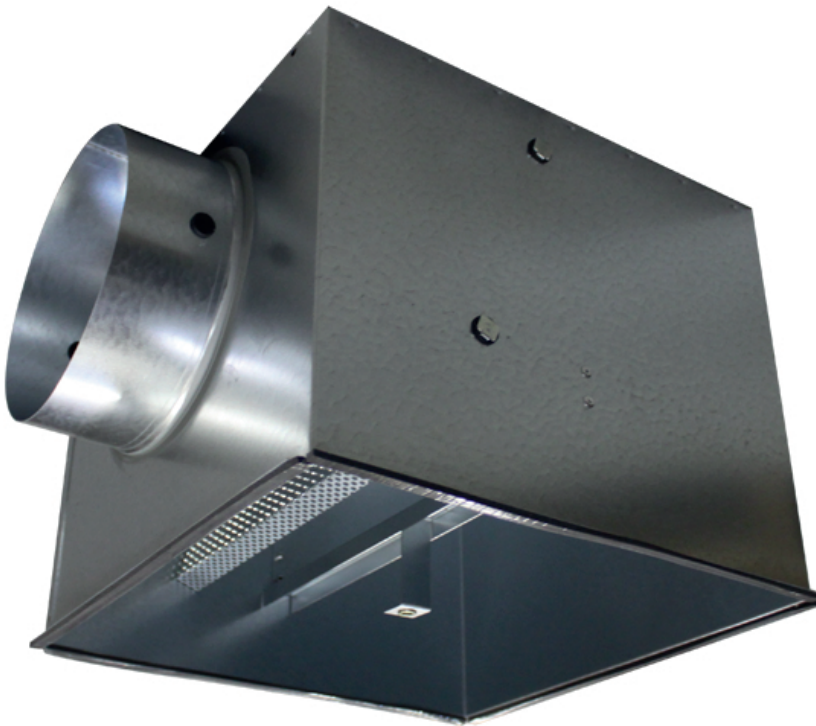


- Plenum boxes
- Square
- Steel



Square plenum boxes type REV-B

Universal plenum boxes with perforated plate in galvanized steel

Brand

- Cairox

Material

- Galvanized steel

Composition

- Rectangular body in plain galvanized steel plate
- Crossbar for central mounting with M6 screw of diffuser
- Perforated equalizing plate for equal air diffusion inside the box
- Seal for airtight connection with the diffuser

Accessories

- Circular regulating valve, type **CRC**

Order example

- **REV-B 600 + CRC 250**

Explanation

REV-B = Plenum box type

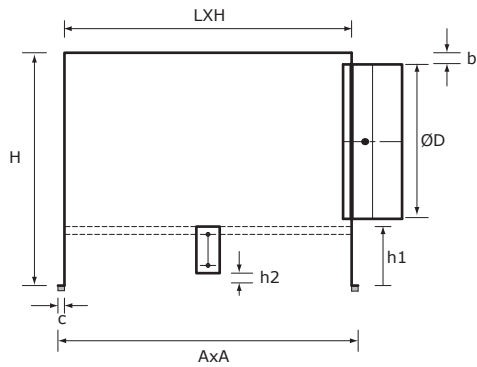
600 = Size type

Accessory

CRC 250 = Regulating valve for plenum box connection Ø250

Other available products

- Insulated plenumbox type **REV-B ISO**



Dimensions								
REV-B	L X H [mm]	A X A [mm]	ØD [mm]	H [mm]	b [mm]	c [mm]	h1 [mm]	h2 [mm]
300	270 X 270	288 X 288	160	250	15	9	65	10
400	370 X 370	388 X 388	200	300	15	9	65	10
500	470 X 470	488 X 488	200	300	15	9	65	10
600	570 X 570	588 X 588	250	350	15	9	65	10