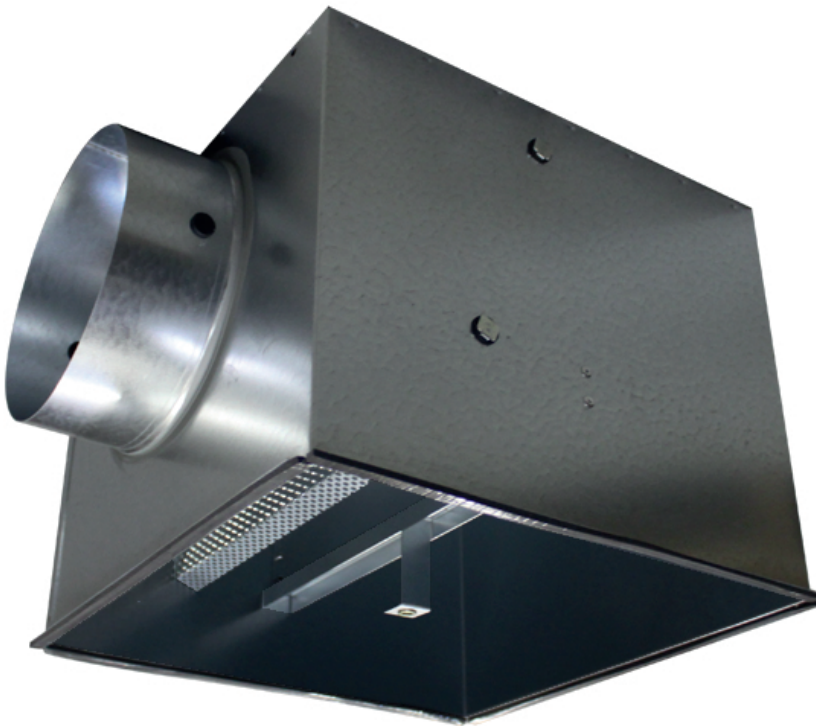


REV-B ISO

- Plenum boxes
- Square
- Steel



Square insulated plenum boxes type REV-B ISO

Universal internally insulated plenum boxes with perforated plate in galvanized steel

Brand

- Cairox

Material

- Galvanized steel

Composition

- Rectangular body in plain steel plate
- Crossbar for central mounting with M6 screw of diffuser
- Perforated equalizing plate for equal air diffusion inside the plenum box
- Seal for airtight connection with the diffuser
- Internally insulated with closed cell insulation
- Insulation thickness: 6 mm

Accessories

- Circular regulating valve, type **CRC**

Order example

- **REV-B ISO 600 + CRC 250**

Explanation

REV-B ISO = Plenum box type, insulated

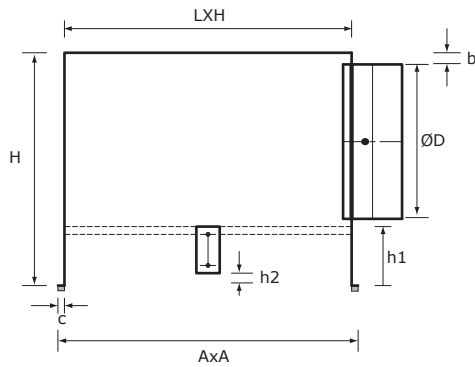
600 = Size type

Accessory

CRC 250 = Regulation valve for plenum box connection Ø250

Other available products

- Non insulated plenumboxes **REV-B**



Dimensions								
REV-B ISO	L X H [mm]	A X A [mm]	$\varnothing D$ [mm]	H [mm]	b [mm]	c [mm]	h1 [mm]	h2 [mm]
300	270 X 270	288 X 288	160	250	15	9	65	10
400	370 X 370	388 X 388	200	300	15	9	65	10
500	470 X 470	488 X 488	200	300	15	9	65	10
600	570 X 570	588 X 588	250	350	15	9	65	10