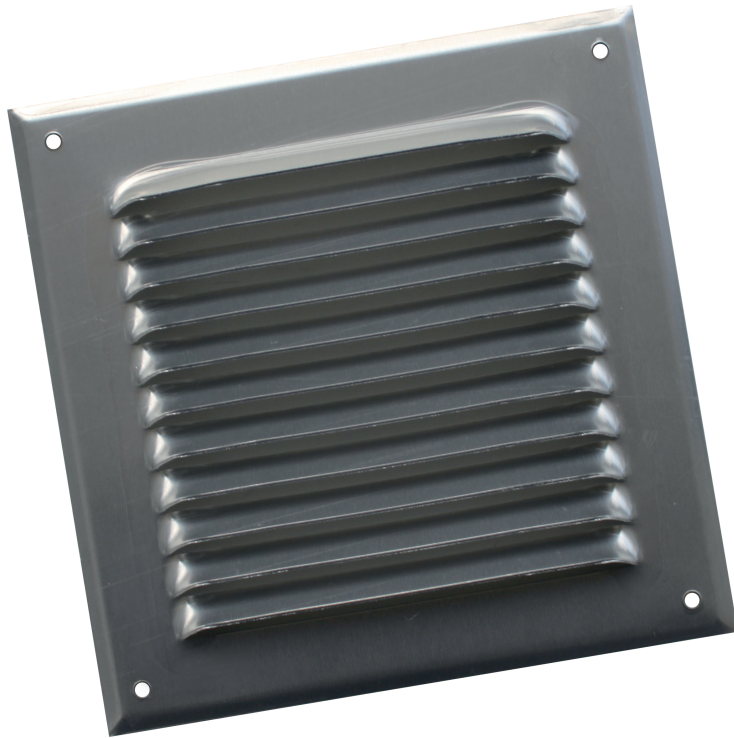


- Surface mounted
- Rectangular
- Aluminium
- Aluminium natural finish



Rectangular external louvres in aluminium type BLR-0

Aluminium external louvres

Brand

- Cairox

Application

- For air intake and exhaust in ventilation systems

Material

- Aluminium

Colour

- Aluminium natural finish

Composition

- Pressed aluminium louvre with 45° enclined pressed blades.

Mounting

- Wall mounted with visible screws (not included)

Text for tender

- The air louvres shall be of the pressed type in aluminium
- Natural aluminium finish
- ATC type **BLR-0**

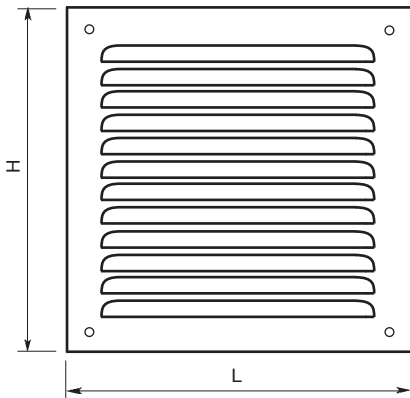
Order example

- **BLR-0, 250 X 250**

Explanation

BLR-0 = Type grill

250 X 250 = Length X Height of the grill



Dimensions					
BLR-0	L [mm]	H [mm]	Ak [m ²]	Q [m ³ /h] (10Pa)	Q [m ³ /h] (+/-2m/s)
150 X 150	150	150	0.007	70	50
200 X 200	200	200	0.0120	135	100
250 X 250	250	250	0.0240	240	175
340 X 340	340	340	0.0510	510	350
390 X 390	390	390	0.0670	670	480
440 X 440	440	440	0.0960	960	700