



## Circular molded aluminium louvres type BLR-FA (RAL9006)

Circular louvres made of moulded aluminium painted in RAL9006

### Brand

- Cairox

### Application

- Louvres for air supply and exhaust in ventilation systems

### Material

- Moulded aluminium
- Inox mesh

### Colour

- Standard colour RAL9006

### Composition

- Moulded aluminium body with enclined aluminium blades. Equipped with welded insect screen which must be removed when used for mechanical ventilation.

### Mounting

- Fitted by casting

### Text for tender

- The circular external air louvres shall be of the circular type, made of moulded aluminium and equipped with insectscreen
- **Cairox type BLR-FA (RAL9006)**

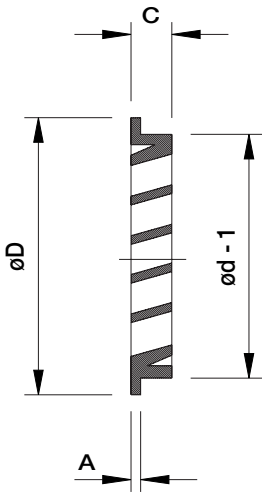
### Order example

- **BLR-FA (RAL9006), 160**

Explanation

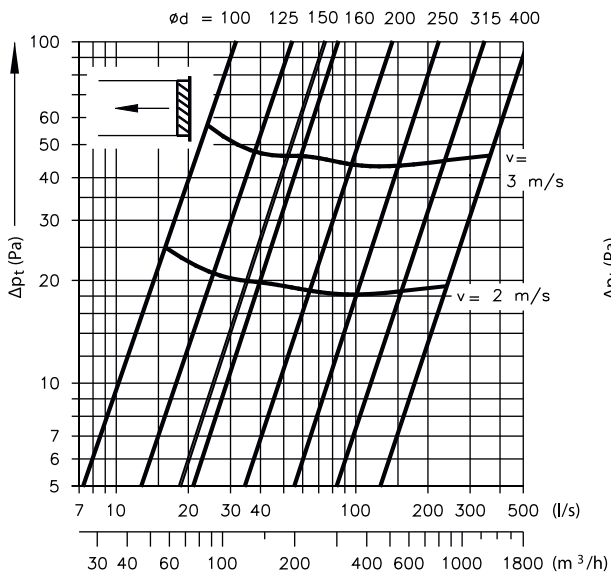
**BLR-FA** = Type grill

**160** = Connection diameter



BLR-FA	Dimensions							
	ød [mm]	A [mm]	øD [mm]	C [mm]	Ak [m <sup>2</sup> ]	Ak %	Ak [m <sup>2</sup> ] incl.screen	Ak % incl.screen
100	99	3	124	19	0.0037	47	0.0026	33
125	124	3	150	19	0.0054	44	0.0038	31
150	149	3	179	17	0.0096	54	0.0067	38
160	159	3	181	18	0.0100	50	0.0070	35
200	199	3	223	20	0.0167	53	0.0116	37
250	249	5	275	20	0.0233	47	0.0162	33
315	314	5	345	21	0.0412	53	0.0288	37
400	399	6	439	41	0.0675	54	0.0477	38

### Selection graph



### Symbols & specifications

- Q = Air volume in l/s and m<sup>3</sup>/h
- Pt = Total pressure drop in Pa
- v = Average velocity in duct in m/s
- Ød = Connection diameter of the louvre in mm