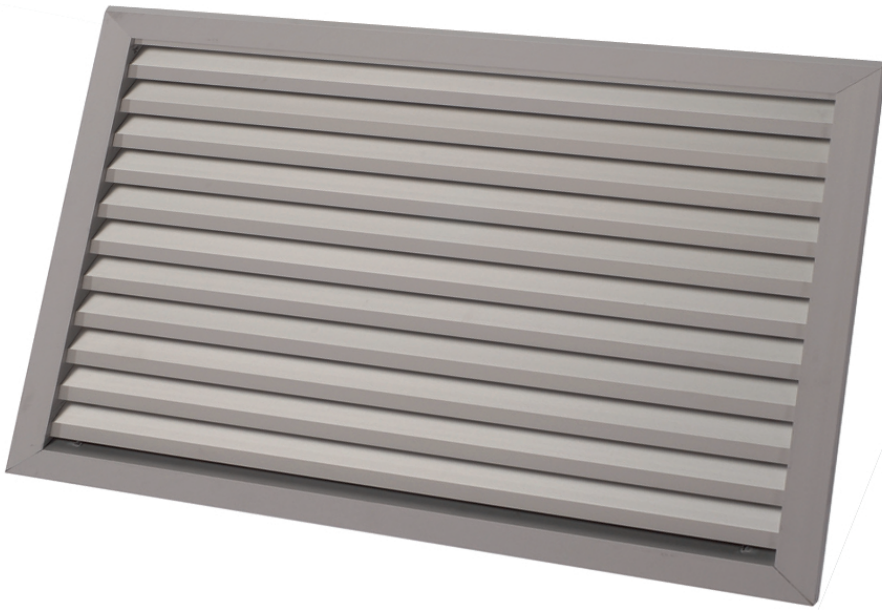


- Built-in
- Rectangular
- Aluminium
- Anodized natural finish



Rectangular external louvres type BLR-1

Aluminium rectangular louvres in standard dimensions with physical free area of 50%

Brand

- CAIROX

Application

- For fresh air intake or exhaust, wall mounted.

Material

- Aluminium

Colour

- Anodized natural finish

Composition

- Frame and blades of aluminium
- Stainless steel INOX304 insectscreen mesh of 2.3 X 2.3 mm fitted behind the louvre
- The weather resistant blades have a blade pitch of 33 mm.
- Can be produced in any other dimension or RAL colours, type **BLR-1M**

Mounting

- To be mounted by means of mounting brackets

Accessories

- Mounting brackets (included)

Text for tender

- The air intake or exhaust grilles shall have weather resistant blades with blade pitch of 33 mm. They shall be made of anodized aluminium in natural colour
- **ATC** type **BLR-1**

Order example

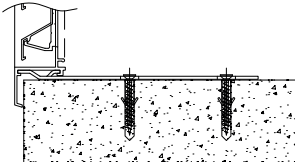
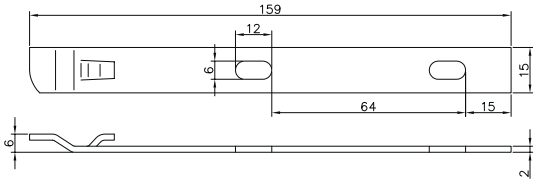
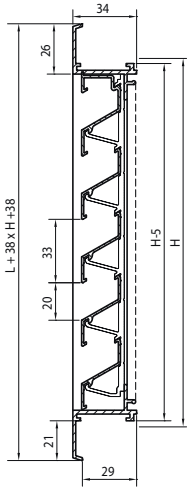
- **BLR-1, 400, 200**

Explanation

BLR-1 = Type grill

400 = Length grill

200 = Height grill



Quick selection																			
Q	Type	200x200	300x200	400x200	300x300	400x300 600x200	500x300	400x400	600x300	600x400	500x500	600x600	700x700	1000x500					
100	Ak	0.020	0.030	0.040	0.045	0.060	0.075	0.080	0.090	0.120	0.125	0.180	0.245	0.250					
	Vk	1.39	0.93																
	Ps	5.9	2.6																
150	Lw(A)	20.2	9.3																
	Vk	2.08	1.39	1.04	0.93														
	Ps	13.3	5.9	3.3	2.6														
200	Lw(A)	32.6	22	14.2	11														
	Vk	2.78	1.85	1.39	1.23	0.93													
	Ps	23.7	10.5	5.9	4.7	2.6													
250	Lw(A)	41.1	30.8	23.2	20.1	12.3													
	Vk	3.47	2.31	1.74	1.54	1.16	0.93												
	Ps	37.1	16.5	9.3	7.3	4.1	2.6												
300	Lw(A)	47.7	37.5	30.1	27	19.3	13.2												
	Vk		2.78	2.08	1.85	1.39	1.11	1.04	0.93										
	Ps		23.7	13.3	10.5	5.9	3.8	3.3	2.6										
400	Lw(A)		42.9	35.6	32.6	25	19	17.3	14										
	Vk			2.78	2.47	1.85	1.48	1.39	1.23	0.93									
	Ps			23.7	18.7	10.5	6.7	5.9	4.7	2.6									
500	Lw(A)			44.2	41.2	33.8	28	26.2	23.1	15.3									
	Vk			3.47	3.09	2.31	1.85	1.74	1.54	1.16	1.11								
	Ps			37.1	29.3	16.5	10.5	9.3	7.3	4.1	3.8								
600	Lw(A)			50.7	47.8	40.5	34.8	33.1	30	22.3	21.2								
	Vk					2.78	2.22	2.08	1.85	1.39	1.33	0.93							
	Ps					23.7	15.2	13.3	10.5	5.9	5.5	2.6							
700	Lw(A)					45.9	40.3	38.6	35.6	28	26.9	17							
	Vk					3.24	2.59	2.43	2.16	1.62	1.56	1.08							
	Ps					32.3	20.7	18.2	14.4	8.1	7.4	3.6							
800	Lw(A)					42.4	44.8	43.2	40.2	32.7	31.7	21.9							
	Vk						2.96	2.78	2.47	1.85	1.78	1.23	0.91						
	Ps						27	23.7	18.7	10.5	9.7	4.7	2.5						
1000	Lw(A)						48.8	47.2	44.2	36.8	35.8	26.1	17.7						
	Vk							3.47	3.09	2.31	2.22	1.54	1.13	1.11					
	Ps							37.1	29.3	16.5	15.2	7.3	4	3.8					
1200	Lw(A)							53.7	50.8	43.5	42.5	33	24.8	24.2					
	Vk									2.78	2.67	1.85	1.36	1.33					
	Ps									23.7	21.9	10.5	5.7	5.5					
1400	Lw(A)									48.9	47.9	38.6	30.5	29.9					
	Vk										3.24	3.11	2.16	1.59	1.56				
	Ps										32.3	29.8	14.4	7.7	7.4				
1600	Lw(A)										53.4	52.4	43.2	35.2	34.7				
	Vk												2.47	1.81	1.78				
	Ps												18.7	10.1	9.7				
1800	Lw(A)												47.2	39.3	38.8				
	Vk													2.78	2.04	2			
	Ps													23.7	12.8	12.3			
2000	Lw(A)													50.7	42.8	42.3			
	Vk														3.09	2.27	2.22		
	Ps														29.3	15.8	15.2		
2200	Lw(A)														53.8	46	45.5		
	Vk															3.4	2.49	2.44	
	Ps															35.4	19.1	18.4	
2400	Lw(A)															56.6	48.8	48.3	
	Vk																2.72	2.67	
	Ps																22.8	21.9	
2800	Lw(A)																51.4	50.9	
	Vk																	3.17	3.11
	Ps																	31	29.8
	Lw(A)																	55.9	55.4

Symbols and specifications

- Ps = Static pressure loss in Pa
- Q = Air Volume in m³/h
- Type = Hole LXH in wall in mm
- Vk = Effective air velocity true the grille in m/s
- Ak = Effective area in m²
- Lw(A) = Acoustic power in dB(A)