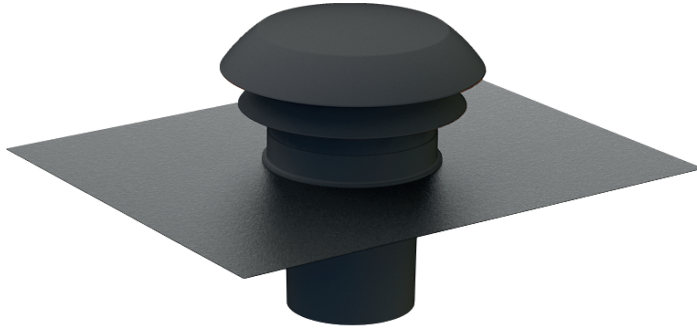


- Roof caps
- Plastic
- Red or anthracite gray



## Plastic roof caps type CTA

Plastic (ASA) roof hoods

### Brand

- Cairox

### Application

- Roofpassage for air intake or exhaust in ventilation systems
- Only for use on roof with tiles or slates

### Material

- Plastic hood with lead flashing and plastic duct connector

### Colour

- Red, RAL 3009
- Anthracite gray, RAL 7016

### Composition

- Roof hood with birdscreen, made of plastic (ASA)
- Duct connection in plastic
- Lead flashing in rolled lead sheet EN ISO 12588

### Mounting

- Provided with lead flashing for mounting on enclined roofs with inclination between 5° and 45°
- Equipped with round duct connection

### Text for tender

- The air intake or exhaust shall be effectuated through a plastic inclined roof hood supplied with integrated lead flashing.
- Finish Red, (RAL 3009) or Black, (RAL 7016) according to the roof finish
- CAIROX type **CTA**

**Order example**

■ CTA, RED, 125

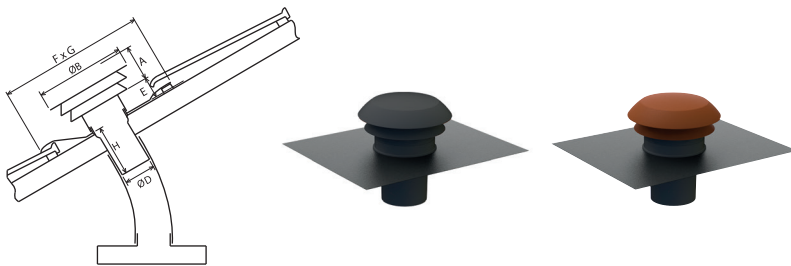
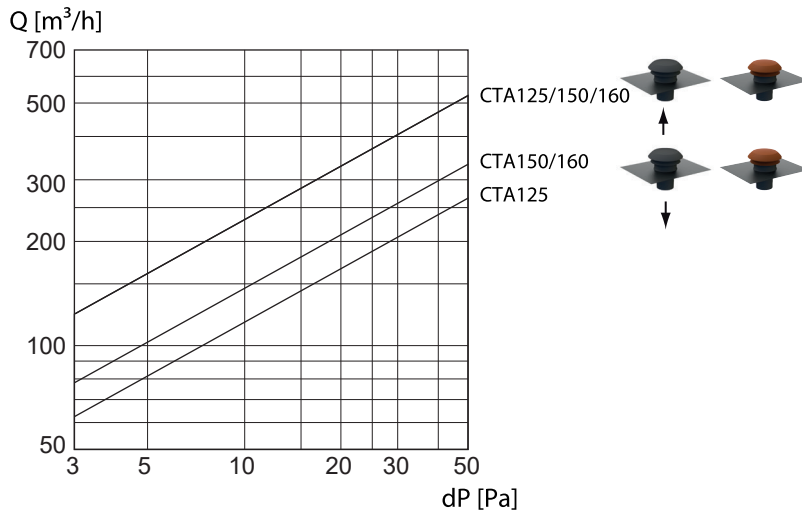
Explanation

CTA = Type roof cap

RED = Color of the cap

125 = Connection diameter

**Pressure loss**



Dimensions								
	A [mm]	ØB [mm]	ØD [mm]	E [mm]	F [mm]	G [mm]	H [mm]	Ak [m <sup>2</sup> ]
CTA 125	81	241	125	53	500	400	140	0,0222
CTA 150	81	241	150	53	500	400	140	0,0222
CTA 160	81	241	160*	53	500	400	140	0,0222

\*with flexible gasket / met soepele afdichting / avec joint souple

Ak [m<sup>2</sup>] = free area of the hood

**Remark**

The deposit of lead on slate roofs can be avoided by applying patination oil on the lead roof flashing.