

- Wall grilles
- Circular
- Aluminium



## Aluminium wall grilles type TMM (RAL9003)

Aluminium wall grilles for small air flows

### Brand

- Cairox

### Application

- For air supply and exhaust in ventilation and air conditioning systems

### Material

- Aluminium

### Colour

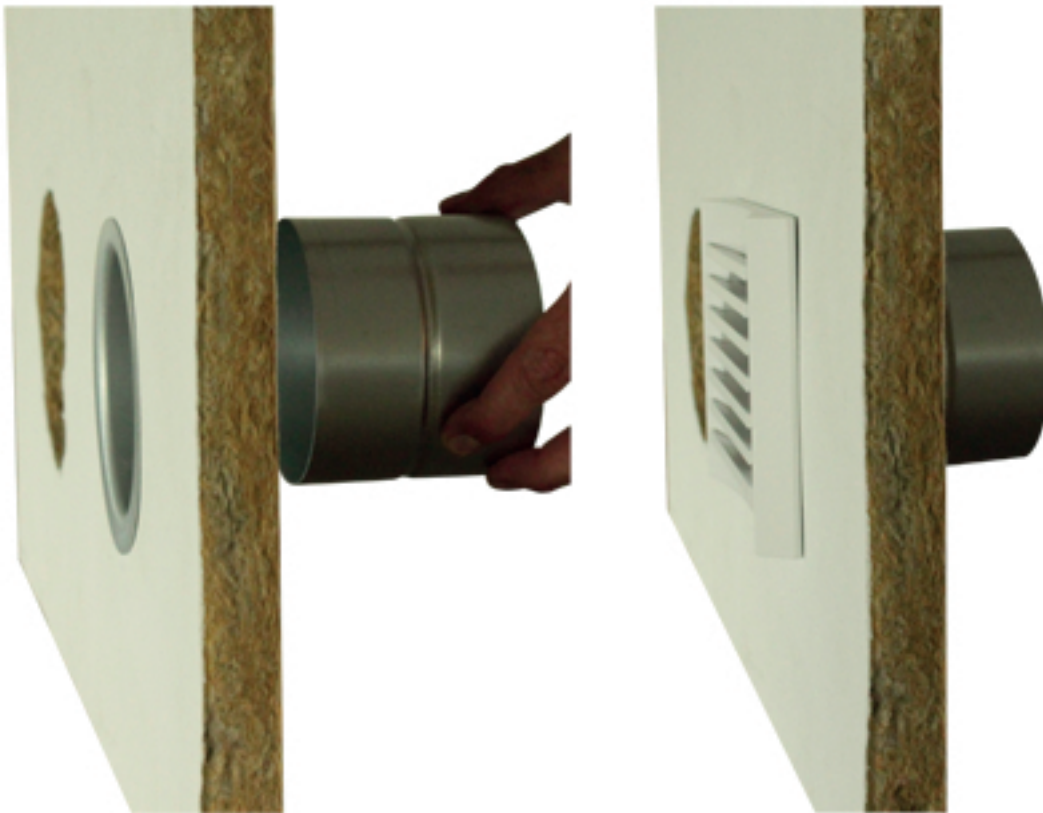
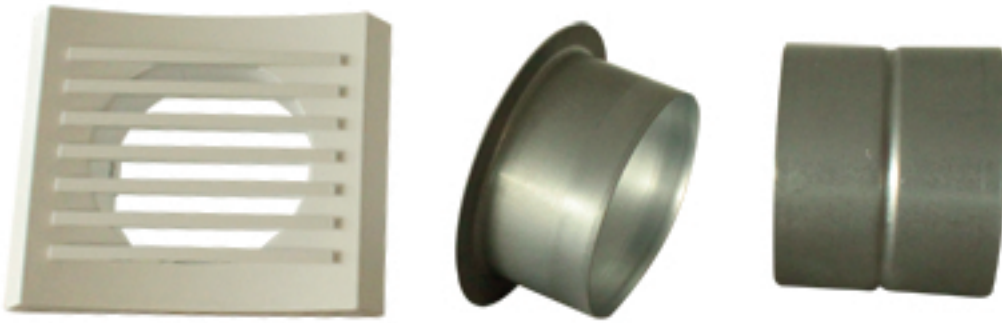
- Standard colour white, RAL 9003

### Composition

- Body and blades made out of aluminium
- Duct connector with metal clips at the back of the grille
- Frame provided with airtight sealing strip

### Mounting

- To be inserted into a galvanised spiral duct
- To be mounted in a false ceiling, using a flange, type **APG**, and a connection piece, type **MDV**

**Text for tender**

- The grilles for small air flows shall be made of aluminium with fixed blades for wall or ceiling mounting
- White, RAL 9003 finish
- CAIROX
- Type **TMM**

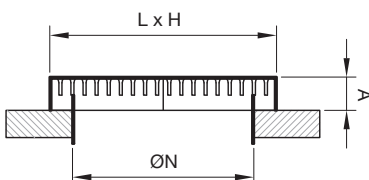
**Order example**

- **TMM, 100**

Explanation

**TMM** = Type of grill

**100** = connection diameter



Dimensions			
	A [mm]	ØN [mm]	LxH [mm]
TMM 100	16	95	155x127
TMM 125	22	120	196x150

Quick selection					
Q	Type	100		125	
	Ak	0.0040		0.0063	
	in/out	in	out	in	out
30	Vk	2	2,30		
	X0.25	1	-		
	Ps	<2	3		
	Lw(A)	<20	<20		
45	Vk	3,20	3,50	2	2
	X0.25	2	-	1	-
	Ps	6	6	<2	2
	Lw(A)	<20	<20	<20	<20
75	Vk	5,20	6,50	3,30	3,80
	X0.25	4	-	2,50	-
	Ps	25	18	4	6
	Lw(A)	20	23	<20	<20
90	Vk	6,30	7,20	4	4,50
	X0.25	5	-	3,50	-
	Ps	39	26	5	9
	Lw(A)	21	35	<20	20
120	Vk			5,30	6
	X0.25			5,50	-
	Ps			9	17
	Lw(A)			22	29
180	Vk			8	9,50
	X0.25			9,50	-
	Ps			20	37
	Lw(A)			32	38

### Symbols and specifications

- Q = Air volume in m<sup>3</sup>/h
- In/out = Values for supply (in) or exhaust (out)
- Ak= Effective area in m<sup>2</sup>
- Vk = Effective velocity in m/s
- X0.25 = Horizontal throw in m (wall mounted) at end velocity of 0.25 m/s
- Ps = Static pressure in Pa
- Lw(A) = Acoustic power in dB(A)
- Type = Connection diameter of the grille