

- Multi-leaf dampers, fins 100 mm
- Air tight, 165 mm blades



## Air tight multi-leaf dampers type JL 255

Air tight multi-leaf dampers in galvanized steel classified DIN EN 1751-4.

### Application

- For airstream regulation in ventilation and airconditioning systems

### Material

- Galvanized steel blades, frame, and round axle
- Air tight sealings between the blades and the gears
- Aluminium gears
- Air-tight polyamid bearings for temperature ranges upto 80°C

### Colour

- Galvanized steel

### Composition

- Galvanized steel aerodynamic designed regulation blades of 165 mm width containing aluminium gears for simultaneous counter-rotating operation of the damper
- Air tight sealings between the blades and the gears classified DIN EN 1751-4
- Galvanized steel axle of Ø 12 mm and length 100 mm mounted on one of the above blades, wich extends 67 mm outside the damperflanges. Axle with borehole at its end to easily mount axle extension LOA 100 M or LOA 150 M (upon request), when a longer axle is required.
- Galvanized steel housing with depth of 175 mm and flange of 30mm, made out of 2 vertical panels with air tight polyamid bearings and 2 horizontal panels, all welded together
- All dampers are made to measure. To obtain the exact height of the damper when in-between sizes are ordered, the upper and lower frame will be bended towards or away from the middle of the damper(see drawing), to make a excellent fit with as much as possible standard fitted blades. Due to this fact the free area of the damper can become less than the opening of the LXH dimension.

### Mounting

- To be mounted between rectangular ducts with flanges of 30 mm
- To be surface mounted on wall, floor or ceiling

**Accessories**

- Manual control handle with fixing system type **MCS-251/255**
- Mounted axle extensions type **LOA 100 M, LOA 150 M**
- Extra axle available upon request
- Square axle end of 9 x 9 mm, type **SQE**
- Actuators **BELIMO**
- Alternative bearings:
  - PTFE bearings for low and high temperature applications type **TBS** (from -50°C to 200°C) and pressures till 2000Pa
  - Brass bearings for high temperature applications type **MBS** (up to 250°C)
  - Ball bearings for high pressure applications type **BBS** (up to 80°C and 2500Pa)
- Air tight silicone sealings (for high temperatures upto 250°C) **+10%**
- Horizontal mounted coupling system type **HVM**
- Alternative outer-mechanism (for high temperature applications)
  - Counter-rotating blades **(+20%)**
  - Parallel moving blades **(+20%)**
- Reinforced frames **(+5%)**
- Multi-leaf damper with vertical blades **(+15%)**
- Alternative construction materials
  - Aluminium **(x 2.25)**
  - Stainless steel (INOX304) **(x 3.75)**
  - Stainless steel (INOX316) **(x 4.3)**
  - Aluminium blades with galvanized steel frame **(x 1.75)**
- Version ATEX available upon request

**Text for tender**

- The multi-leaf volume control dampers shall be of the air tight type classified DIN EN 1751-4 in galvanized steel with counter-rotating blades, aluminium gears, round axle and polyamid bearings.
- ATC Type **JL 255**

**Order example**

- **JL255, 1400, 1500, C30 + MCS-251/255**

Explanation

**JL 255** = Type of air-tight multi-leaf damper

**1400** = Length

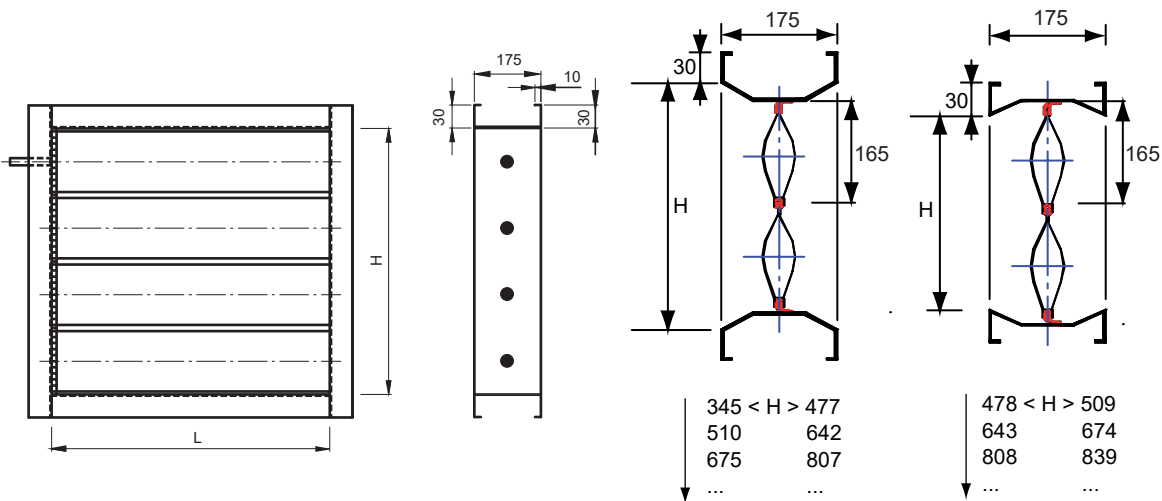
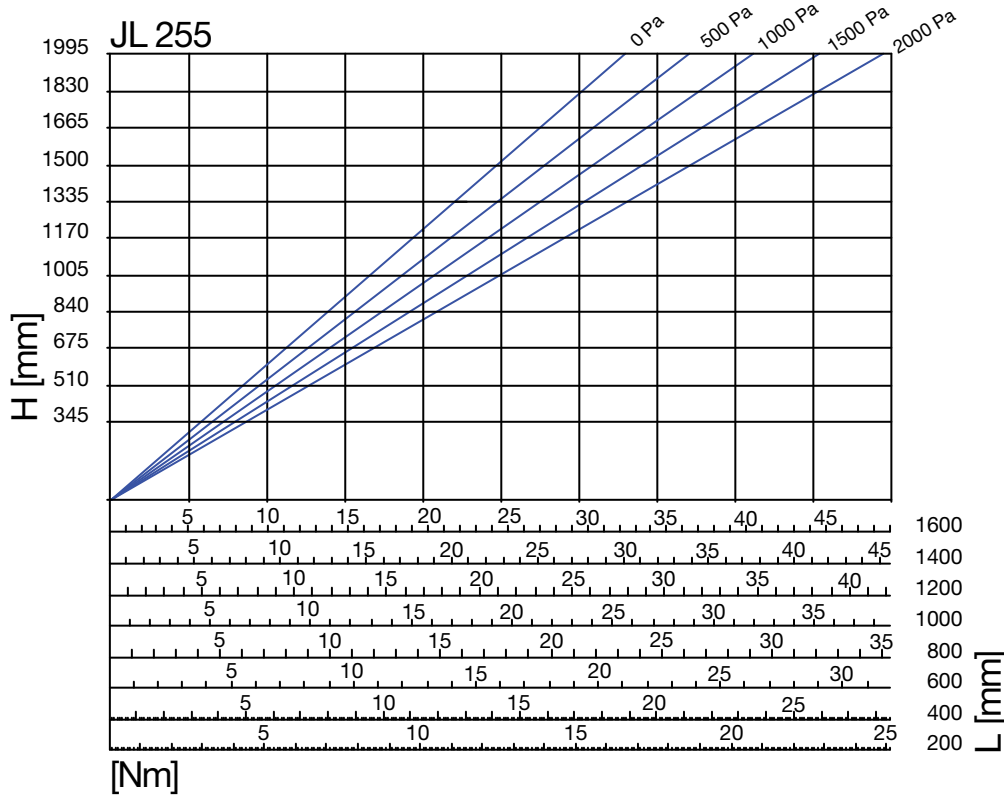
**1500** = Height

**C30** = connection flange

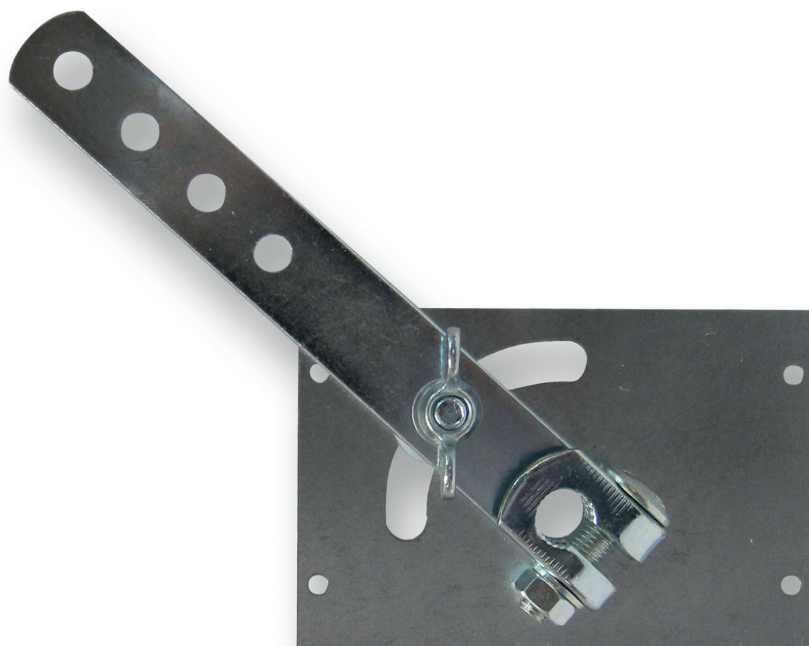
Accessories (Optional)

**MCS-251/255** = Manual control with fixing system

Torque



- Accessories for multi-leaf dampers
- Manual control handles



## Manual controls with fixing system type MCS

Manual Control handles with fixing system for multi-leaf dampers

### Application

- Manual control handles MCS 250E with fixing system for JS 250E KIT assembled multi-leaf dampers of width 120mm
- Manual control handles MCS 250/254 with fixing system for JS 250 or JL254 multi-leaf dampers of width 110mm
- Manual control handles MCS 251/255 with fixing system for JS 251 or JL255 multi-leaf dampers of width 175mm

### Order example

#### ■ MCS-250/254

Explanation

**MCS** = Manual control handle

**250/254** = Type of multi-leaf damper JS250 or JL254, width 110mm