



Circular connection piece for dampers type CCP

Circular connection piece for connection of circular ducts on multi-leaf dampers
To be ordered per piece with multi-leaf damper

Application

- To be applied when multi-leaf dampers are connected in between 2 circular ducts(2 connection pieces needed)
- To be applied when circular ducts are connected to a wall mounted damper (1 piece needed)
- Made for connection on dampers with flanges of 30 mm according the drawing and for damper sizes LXH according table.

Material

- Galvanized steel with EPDM seal

Composition

- Flat edged sheet steel with round plug with EPDM rubber gasket

Mounting

- To be mounted on JS250, JS251, JL254 of JL255 Multi-leaf damper

Order example

- **CCP 450**

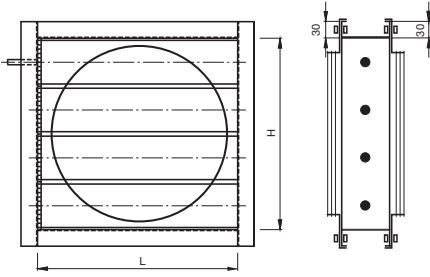
Explanation

CCP = Circular connectionpiece for JS250, JL254, JS251 of JL255

450 = Duct connection diameter flange

Other available products

- Versions in aluminum, Stainless steel 304 (V2A) or Stainless steel 316 (V4A) without rubber seals available on request



Dimensions			
CCP	LXH [mm]	DIA [mm]	
200	200 X 200	200	
250	250 X 250	250	
315	350 X 350	315	
355	400 X 400	355	
400	400 X 400	400	
450	450 X 450	450	
500	500 X 500	500	
560	600 X 600	560	
630	650 X 650	630	
710	750 X 750	710	