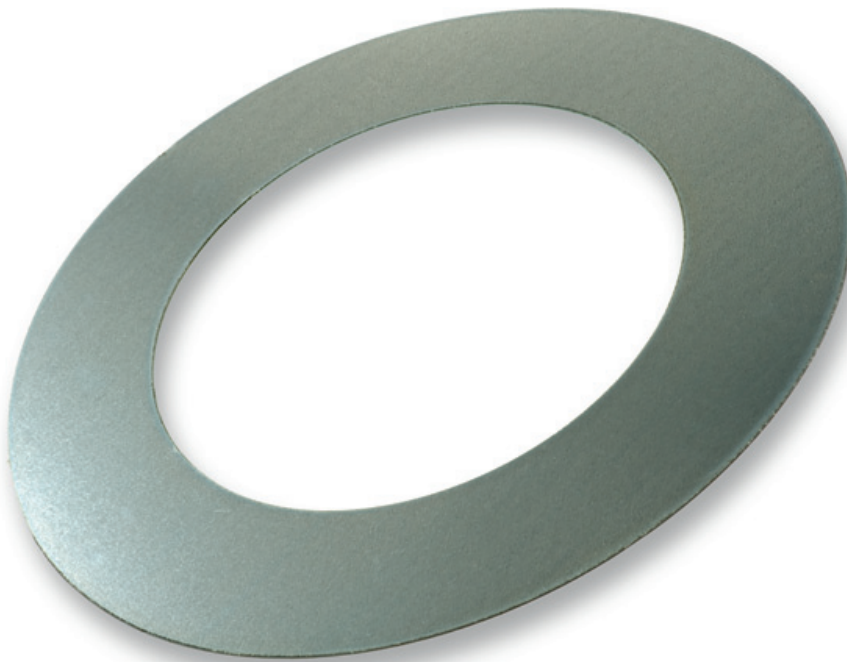


- Rosace
- Without rubbersealing



Rosaces type ARS

Rosaces in galvanised steel, used for finishing openings of air ducts

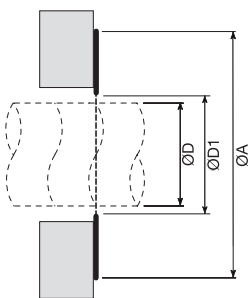
Order example

■ **ARS, 250**

Explanation :

ARS = Type of rosace

250 = Diameter of rosace



Dimensions			
	ØD [mm]	ØD1 [mm]	A [mm]
ARS 80	80	86	236
ARS 100	100	106	256
ARS 125	125	131	281
ARS 150	150	156	306
ARS 160	160	166	316
ARS 200	200	206	356
ARS 250	250	256	401
ARS 315	315	321	471
ARS 355	355	361	511
ARS 400	400	406	556
ARS 450	450	456	606
ARS 500	500	506	656
ARS 560	560	566	716
ARS 630	630	636	786

Dimensions

For dimensions please check our website www.cairox.be