



## Segmented bends 60° with rubber type BDSG60

Segmented bends 60° with rubber sealing.  
Radius  $R = 1 \times D$  (upto  $\varnothing 630$ ),  $R=0.75 \times D$  (starting from  $\varnothing 710$ ).  
Connection pieces with airtightness class C to EN 12237. The airtightness class is also determined by the mounting on the construction site.

### Other available products

- Segmented bends 60° without rubber sealing **type BDS60**

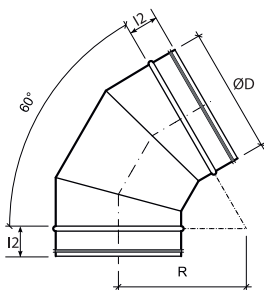
### Order example

- **BDSG60, 200**

Explanation :

**BDSG60** = Bend type

**200** = Diameter of bend



Dimensions			
BDSG 60	ØD	R	I2
80	80	80	45
100	100	100	45
125	125	125	45
150	150	150	45
160	160	160	45
180	180	180	45
200	200	200	45
250	250	250	45
315	315	315	45
355	355	355	45
400	400	400	45
450	450	450	45
500	500	500	45
560	560	560	70
630	630	630	70
710	710	533	70
800	800	600	70

**Dimensions**

For dimensions please check our website [www.cairox.be](http://www.cairox.be)