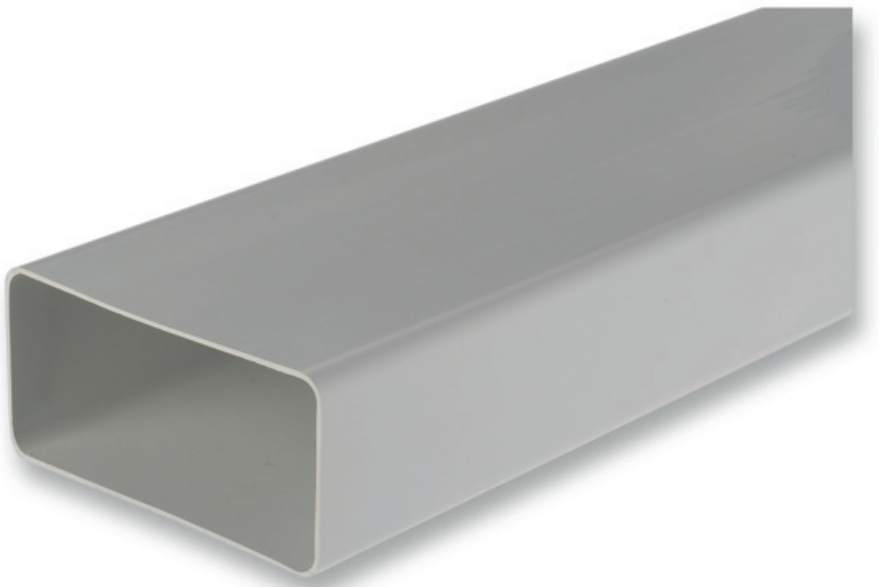


- Not insulated
- Rectangular ducts
- Duct



Rectangular PVC ducts type SDA SD

Rectangular duct, made of white PVC
Available dimensions: 120 x 60 mm and 204 x 60 mm
Available lengths: 1000 mm and 1500 mm

Application

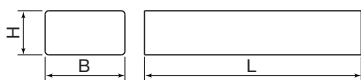
- Used for extraction in a ventilation system in less accessible places such as eg. false ceilings

Specifications

- May not be processed in the screed

Text for tender

- For the construction of the channel network, smooth, rectangular white PVC channels and associated accessories are used. For the connection, a plug-in connection is used in which the channels are male and the fittings are female. The duct system has been developed for mechanical ventilation where the installation height is limited, such as a false ceiling, for toilets, kitchens, etc., without mechanical load. The channels are not provided for placement in concrete or concrete screed floors. Mounting is preferably done with the previously developed mounting brackets or other stable mounting methods. The molded parts (sleeves, bends, T-pieces, etc.) are provided with a female connection into which the channels can be pushed. In order to establish a mechanical airtight connection of the channels with the fittings, the channel parts are preferably glued together with hard PVC glue. As a result, no punctures are made in the channel wall and the inside is smooth, which allows easy cleaning of the channel. The outside can be additionally provided with a sealing tape. The technical data sheet of the manufacturer and any test pieces can be submitted to the architect or engineer for approval.
- ATC Type **SDA**



Dimensions			
	H	B	L
SDA SD 120x60 L=1000MM	60	120	1000
SDA SD 120x60 L=1500MM	60	120	1500
SDA SD 204x60 L=1000MM	60	204	1000
SDA SD 204x60 L=1500MM	60	204	1500