

Wedge anchors with collar type WEA-C

Wedge anchors with collar and inner thread

Brand

- SUFIX

Application

- For fixation of threaded rods in concrete or brick

Material

- Electro galvanized steel

Specifications

- White zinc plated $\geq 5 \mu\text{m}$ ISO 4042 A2J
- Short drill depth

Models

- Available in M6, M8, M10 and M12

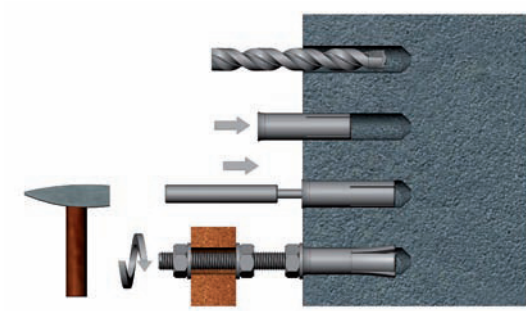
Accessories

- Ideal spread when using tool, type **WEA-P**

	Dimensions	
	A [mm]	ØB [mm]
WEA-C M8	30	10
WEA-C M10	40	12



Fasteners



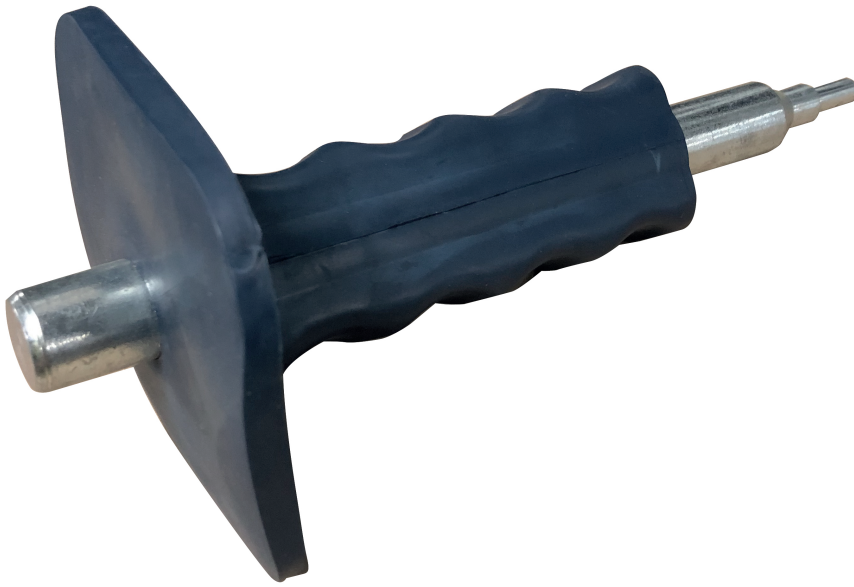


D.01

Fasteners

WEA-P

— Anchors and plugs



Wedge anchor pin type WEA-P

Wedge anchor pin for wedge anchors, type **WEA-C**