

- Anchors and plugs
- Indoor and outdoor use



## Chemical anchors type FIX-O-CHEM

Chemical anchoring

### Brand

- SUFIX

### Application

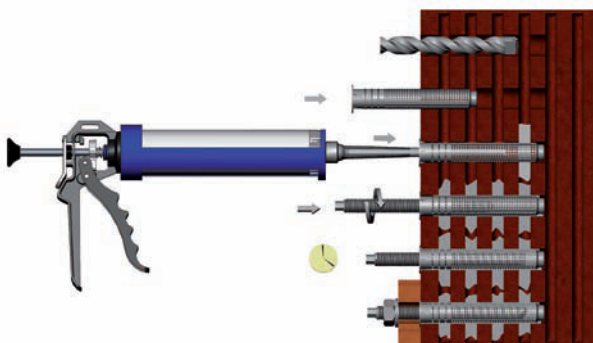
- Strong and durable fixing in massive and hollow foundation.
- Delivered with static mixer

### Specifications

- Chemical fixation based on polyester-resin without styrene
- Very quick hardening
- Extraordinary fixation power
- No need for a special 2-component gun
- Application temperature: -5°C til +35°C

### Accessories

- Spare static mixer, type **FIX-O-MIX**
- Nylon plugs for hollow walls, type **FIX-O-PLUG** available in length 80 or 130 mm
- Cleaning wipes, type **CLEANERS**
- Gun, type **GUN 18**



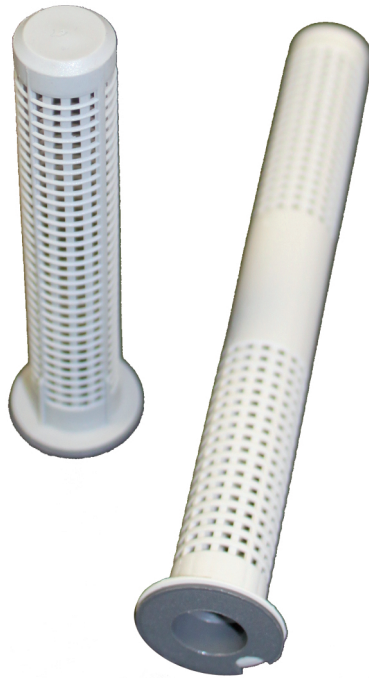


## Static mixers for chemical anchors type FIX-O-MIX

Static Mixer for FIX-O-CHIM

**Brand**

■ SUFIX



## Nylon plugs for chemical anchors type FIX-O-PLUG

Nylon for **FIX-O-CHEM**

### **Brand**

- Suffix

### **Application**

- To be applied when FIX-O-CHEM is used in hollow walls

### **Specifications**

- Available in length of 80 or 130 mm
- Drill diameter of 16 mm