

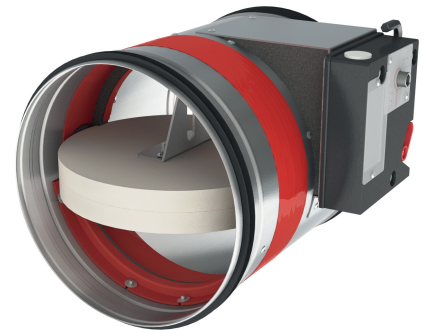


E.01

Fire dampers

CR2+CFTH

- Fire dampers
- Circular
- EI120S
- With fuse 72°C
- Ø 355 - 630



Circular fire dampers EI120S type CR2+CFTH

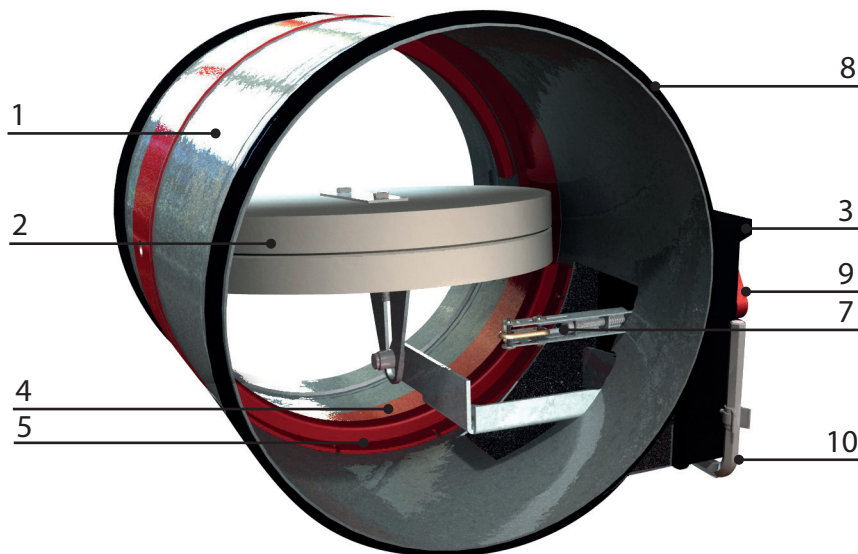
Circular fire dampers with a fire resistance of 120 minutes. When the temperature in the damper rises above 72 °C the fusible link will break and the damper will close. When closed, the expanding material around the fireblade will swell and assure a fire and air-tight seal against hot air and smoke. The tunnel is made out of galvanized steel. The **CR2 + CFTH** fire dampers have a manual operating mechanism with indication of the blade position. Optionally, an end or begin of range switch **FDC CFTH** can be added to the mechanism. The operating mechanism can be removed easily, for inspection purposes or for replacing the fusible link.

Application

- Fire compartmentation
- To close and seal off ventilation ducts in case of fire
- For air temperatures of -10°C up to temperature of fusible link
- For air with RV 0-96%
- Range of Ø355 up to Ø630 mm
- For size Ø100 upto Ø315 see type **CR120 + MFUS**
- To be mounted horizontally or vertically

Material

- Galvanized steel

Construction

Composition

- Galvanized steel tunnel
- Fireproof blade in fibersilicate
- Intumescent strip around the valve
- Manual control mechanism CFTH with fusible link 72 °C

- 1. Refractory casing (made out of galvanised steel)
- 2. Damper blade
- 3. Operating mechanism
- 4. Sealing cold smoke
- 5. Blade bumper
- 6. Intumescent strip
- 7. Fusible link 72°C
- 8. Rubber sealing ring
- 9. Handle for deactivation
- 10. Allen key for arming

Mounting

- To be inserted in fire resistant walls or floors according to the mounting instructions delivered with the valves
- To be connected with round air ducts

Certification

- Classified EI120(v_e, h_o i<->o)S at 500Pa according EN 13501-3 in rigid wall and rigid floor
- Classified EI60(v_e i<->o)S at 500Pa, EI90(v_e i<->o)S at 300Pa and EI120(v_e i<->o)S at 500Pa according EN 13501-3 in different flexible wall types
- Certified with test report Efectis 10-A-459 / EFR-19-005409 or WFRG 16128
- Airtight EN 1751 class B, Class C upon request
- CE marked

Accessories

- Fire resistant plaster, type **BP**
- End- or begin of range switch, type **FDC CFTH** (available as KIT or premounted)

Text for tender

- The fire dampers shall be of the round type with a fire resistance of 120 minutes, certified according to EN 13501-3 . They will consist of a galvanized steel tunnel and fireproof valve. The control mechanism will be manually operated and shall have a blade position indicator and fusible link of 72 °C
- ATC
- type **CR2 + CFTH**



Order example

■ **CR2 + CFTH, 355**

Explanation

CR2 = Round fire damper 120 Minutes

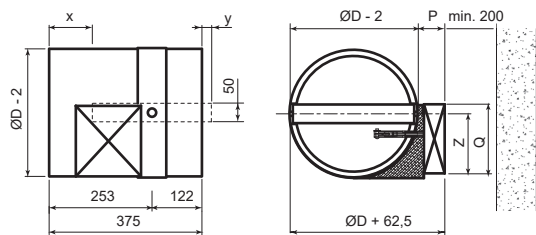
CFTH = Mechanism

355 = Connection diameter

Quick selection										
øD	Ak	v	1	2	3	4	5	6	7	8
200	0.013	Q	113	226	339	452	566	679	792	905
		Vk	2.40	4.90	7.30	9.70	12.20	14.60	17.02	19.40
		Ps	4.50	17.80	40	71	111	160	218	285
		Lw(A)	30	40	46	50	53	56	58	60
		Q	177	353	530	707	884	1060	1237	1414
250	0.025	Vk	1.90	3.90	5.80	7.80	9.70	11.70	13.60	15.50
		Ps	2	10	21	38	59	86	116	152
		Lw(A)	28	38	44	49	52	55	57	59
		Q	281	561	842	1122	1403	1683	1964	2244
		Vk	1.70	3.30	5	6.60	8.30	9.90	11.60	13.20
315	0.047	Ps	1	5	12	21	33	47	64	83
		Lw(A)	27	37	43	47	50	53	55	57
		Q	356	713	1069	1425	1782	2138	2494	2851
		Vk	1.50	3.10	4.60	6.20	7.70	9.30	10.80	12.40
		Ps	1	4	9	16	24	35	48	62
355	0.064	Lw(A)	26	36	42	47	50	52	55	57
		Q	452	905	1357	1810	2262	2714	3167	3619
		Vk	1.50	2.90	4.40	5.90	7.30	8.80	10.20	11.70
		Ps	1	3	7	12	18	26	36	46
		Lw(A)	25	36	42	46	49	52	54	56
400	0.086	Q	573	1145	1718	2290	2863	3435	4008	4580
		Vk	1.40	2.80	4.20	5.60	7	8.40	9.80	11.20
		Ps	1	2	5	9	14	20	27	35
		Lw(A)	25	35	41	45	48	51	53	55
		Q	707	1414	2121	2827	3534	4241	4948	5655
450	0.114	Vk	1.30	2.70	4	5.40	6.70	8.10	9.40	10.80
		Ps	0	2	4	7	11	16	21	28
		Lw(A)	24	34	40	45	48	51	53	55
		Q	887	1773	2660	3547	4433	5320	6207	7093
		Vk	1.30	2.60	3.90	5.20	6.50	7.80	9.10	10.40
500	0.146	Ps	0	1	3	5	8	12	16	22
		Lw(A)	24	34	40	44	47	50	52	54
		Q	1122	2244	3367	4489	5611	6733	7855	8978
		Vk	1.30	2.50	3.80	5	6.30	7.60	8.80	10.10
		Ps	0	1	2	4	7	10	14	18
560	0.189	Lw(A)	23	33	39	43	47	49	52	54
		Q	1414	2827	4241	5655	7069	8483	9897	11311
		Vk	1.30	2.60	3.90	5.20	6.50	7.80	9.10	10.40
		Ps	0	1	3	5	8	12	16	22
		Lw(A)	24	34	40	44	47	50	52	54
630	0.247	Q	1122	2244	3367	4489	5611	6733	7855	8978
		Vk	1.30	2.50	3.80	5	6.30	7.60	8.80	10.10
		Ps	0	1	2	4	7	10	14	18
		Lw(A)	23	33	39	43	47	49	52	54

Symbols and specifications

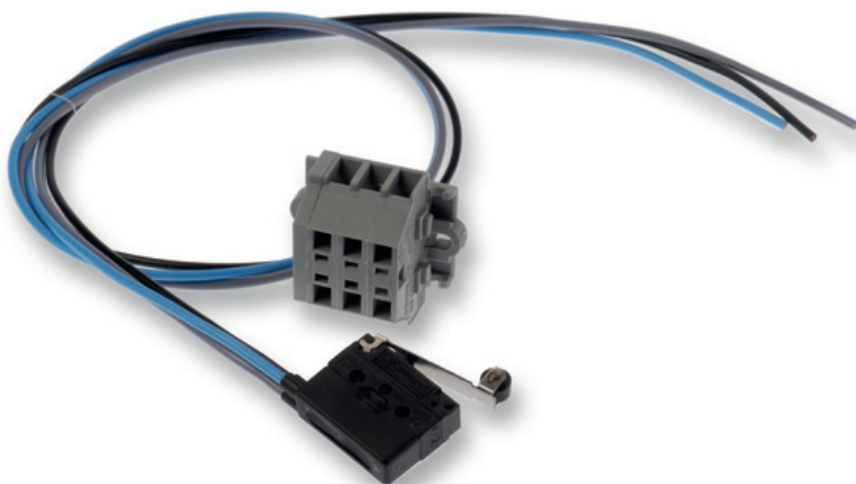
- Ak = Effective area in m²
- v = Air velocity in the duct in m/s
- Q = Air volume in m³/h
- Vk = Effective velocity through the damper in m/s
- Ps = Static pressure in Pa
- Lw(A) = Acoustic power in dB(A)
- Dia = Duct diameter in mm



CR2 + CFTH	Dimensions				
	P	Q	Z (H<315)	Z (H≥315)	y
	65	180	60	155	=(ØD/2)-134

**FDC CFTH**

- Accessories for fire dampers
- Start/end of range switch
- For CR2 and CU2 with CFTH



Begin/end of range switch for CFTH type FDC CFTH

Begin or end of range switch for CR2 and CU2 with CFTH mechanism (Available in KIT or premounted as end-switch when ordered with fire dampers)

Composition

- 3 wires: black (COM), grey (NF), blue (NO)
- Microswitch in IP65 housing (COM and NF connected when not switched, COM and NO connected when switched)

Order example

- **KIT FDC CFTH**

Explanation

KIT FDC CFTH = End of range switch for CFTH mechanism (delivered separately)

Specifications

Position switches : 1 mA...6A DC 5V...AC250V

Ambient temperature : -30°C up to 50°C

Maintenance : Maintenance free

Electrical connection