

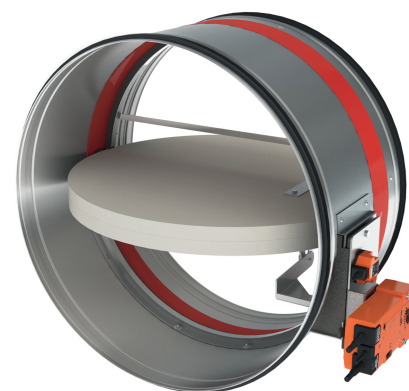
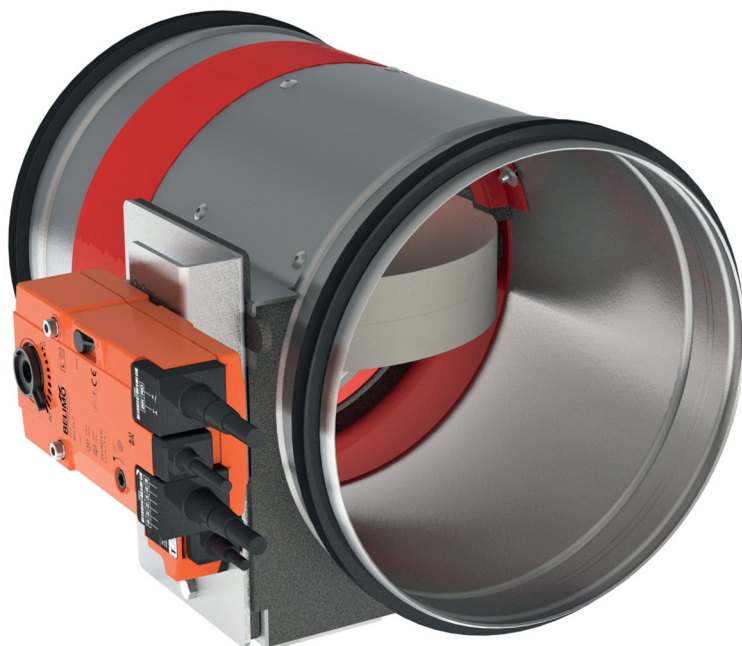


E.01

Fire dampers

CR2+BFLT/BFNT 24

- Fire dampers
- Circular
- EI120S
- Motorized
- BELIMO 24V
- Ø 355 - 630



Motorized circular fire dampers EI120S type CR2+BFLT/BFNT 24

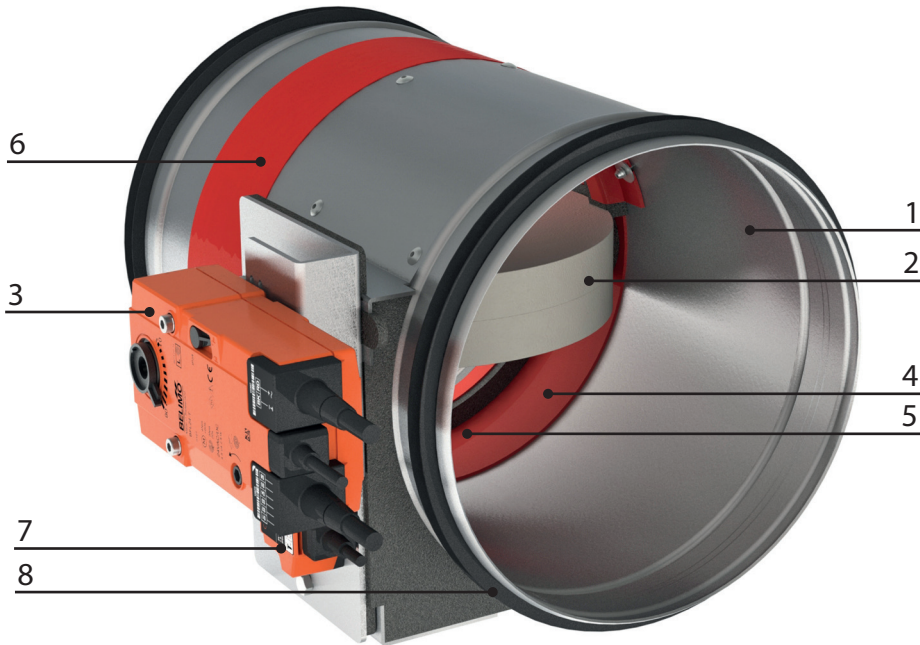
Motorized circular fire dampers with a fire resistance of 120 minutes. When the temperature of the thermo-electric fuse in the damper rises above 72 °C the damper will close. When closed, the expanding material around the fireblade will assure a fire and air-tight seal against hot air and smoke. The tunnel is made out of galvanized steel. The **CR2 + BFLT/BFNT 24** fire dampers have a motorized operating mechanism with indication of the blade position including begin of range or end switch.

Application

- Fire compartmentation
- To close and seal off ventilation ducts in case of fire
- For air temperatures of -10°C up to temperature of the thermo-electric fuse
- For air with RV 0-96%
- Range of Ø355 up to Ø630 mm
- For size Ø100 up to Ø315 see type **CR120**
- To be mounted horizontally or vertically

Material

- Galvanized steel

Construction

Composition

- Galvanized steel tunnel
 - Fireproof blade in fibersilicate
 - Intumescent strip around the valve
 - 24V Actuator BELIMO BFLT 24 (small valves) of BFNT 24 (other sizes)
1. Steel tunnel
 2. Damper blade
 3. Operating mechanism with:
 - manual rearmation option
 - blade position indicator
 4. Cold packing
 5. Blade bumper
 6. Intumescent strip
 7. Thermo-electric fuse
 8. Rubber sealing

Mounting

- To be inserted in fire resistant walls or floors according to the mounting instructions delivered with the valves
- To be connected with round air ducts
- To be electrically wired to the fire detection or building installation

Certification

- Classified EI120(v_e,h_o i<->o)S at 500Pa according EN 13501-3 in rigid wall and rigid floor
- Classified EI60(v_e i<->o)S at 500Pa, EI90(v_e i<->o)S at 300Pa and EI120(v_e i<->o)S at 500Pa according EN 13501-3 in different flexible wall types
- Certified with test report Efectis 10-A-459 / EFR-19-005409 or WFRG 16128
- Airtight EN 1751 class B, Class C upon request
- CE marked

Accessories

- Fire resistant plaster, type **BP**

Text for tender

- The fire dampers shall be of the round type with a fire resistance of 120 Minutes, certified according to EN 13501-3. They will consist of a galvanized steel tunnel and fireproof valve. The control mechanism will be automatically operated by means of an actuator and shall have a blade position indicator and thermo-electrical fusible link of 72 °C
- type **CR2 + BFLT/BFNT 24**

Order example
■ CR2 + BFLT 24, 315

Explanation

CR2 = Round fire damper 120 Minutes

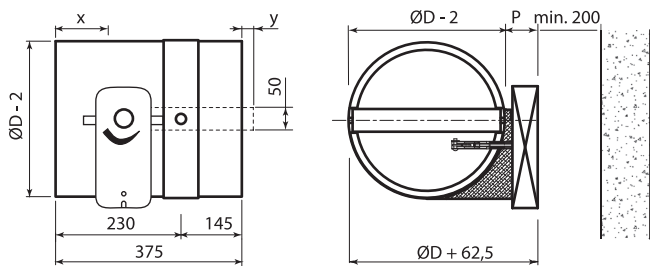
BFLT 24 = Actuator 24V with thermostatic fuse

315 = Connection diameter

Quick selection										
øD	Ak	v	1	2	3	4	5	6	7	8
200	0.013	Q	113	226	339	452	566	679	792	905
		Vk	2.40	4.90	7.30	9.70	12.20	14.60	17.02	19.40
		Ps	4.50	17.80	40	71	111	160	218	285
		Lw(A)	30	40	46	50	53	56	58	60
		Q	177	353	530	707	884	1060	1237	1414
250	0.025	Vk	1.90	3.90	5.80	7.80	9.70	11.70	13.60	15.50
		Ps	2	10	21	38	59	86	116	152
		Lw(A)	28	38	44	49	52	55	57	59
		Q	281	561	842	1122	1403	1683	1964	2244
		Vk	1.70	3.30	5	6.60	8.30	9.90	11.60	13.20
315	0.047	Ps	1	5	12	21	33	47	64	83
		Lw(A)	27	37	43	47	50	53	55	57
		Q	356	713	1069	1425	1782	2138	2494	2851
		Vk	1.50	3.10	4.60	6.20	7.70	9.30	10.80	12.40
		Ps	1	4	9	16	24	35	48	62
355	0.064	Lw(A)	26	36	42	47	50	52	55	57
		Q	452	905	1357	1810	2262	2714	3167	3619
		Vk	1.50	2.90	4.40	5.90	7.30	8.80	10.20	11.70
		Ps	1	3	7	12	18	26	36	46
		Lw(A)	25	36	42	46	49	52	54	56
400	0.086	Q	573	1145	1718	2290	2863	3435	4008	4580
		Vk	1.40	2.80	4.20	5.60	7	8.40	9.80	11.20
		Ps	1	2	5	9	14	20	27	35
		Lw(A)	25	35	41	45	48	51	53	55
		Q	707	1414	2121	2827	3534	4241	4948	5655
450	0.114	Vk	1.30	2.70	4	5.40	6.70	8.10	9.40	10.80
		Ps	0	2	4	7	11	16	21	28
		Lw(A)	24	34	40	45	48	51	53	55
		Q	887	1773	2660	3547	4433	5320	6207	7093
		Vk	1.30	2.60	3.90	5.20	6.50	7.80	9.10	10.40
500	0.146	Ps	0	1	3	5	8	12	16	22
		Lw(A)	24	34	40	44	47	50	52	54
		Q	1122	2244	3367	4489	5611	6733	7855	8978
		Vk	1.30	2.50	3.80	5	6.30	7.60	8.80	10.10
		Ps	0	1	2	4	7	10	14	18
560	0.189	Lw(A)	23	33	39	43	47	49	52	54
		Q	1414	2827	4241	5655	7069	8483	9897	11311
		Vk	1.20	2.40	3.60	4.80	6.00	7.20	8.40	9.60
		Ps	0	1	2	4	7	10	14	18
		Lw(A)	23	33	39	43	47	49	52	54
630	0.247	Q	1773	3547	5320	7093	8866	10639	12412	14185
		Vk	1.10	2.20	3.30	4.40	5.50	6.60	7.70	8.80
		Ps	0	1	2	4	7	10	14	18
		Lw(A)	23	33	39	43	47	49	52	54
		Q	2827	5655	8483	11311	14139	16967	19795	22623

Symbols and specifications

- Ak = Effective area in m²
- v = Air velocity in the duct in m/s
- Q = Air volume in m³/h
- Vk = Effective velocity through the damper in m/s
- Ps = Static pressure in Pa
- Lw(A) = Acoustic power in dB(A)
- Dia = Duct diameter in mm



CR2 + BFLT/BFNT 24	Dimensions					
	P	Q	Z (H<300)	Z (H>=300)	x	y
	110	210	80	180	= (ØD/2) - 265	= (ØD/2) - 134



Electrical connection

