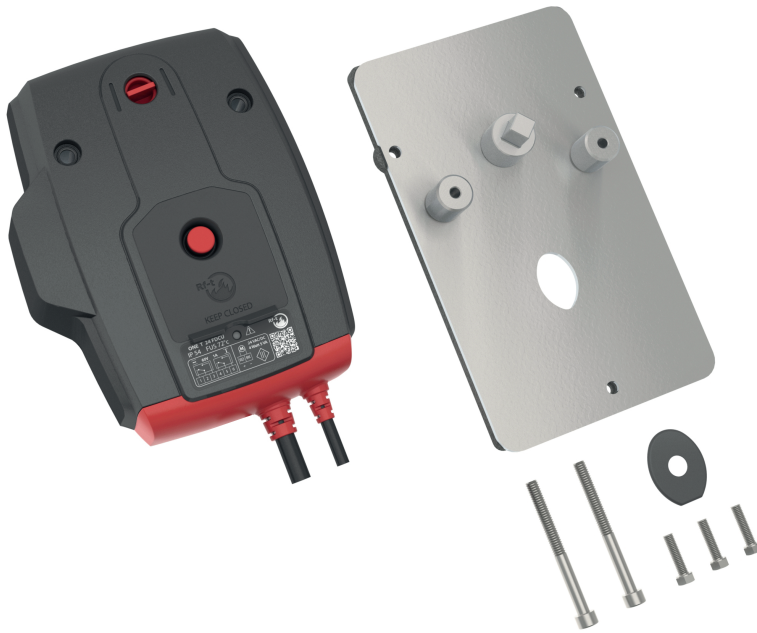




- Accessories for fire dampers
- Motorisation kit



Motorisation sets for fire dampers type KIT ONE

Motorisation kit for fire dampers **CR60**, **CR120**, **CR2**, **CU-LT** and **CU2**

Application

- For changeover of dampers with manual mechanism with fusible link towards à motorized mechanism
- For replacement of defect fire damper servomotor

Composition

- ONE actuator with spring return equipped with a thermo-electrical fuse.
- Mounting screws and shaft extension for changeover from manual fusible link mechanism CFTH or MFUS(P) towards motorized mechanism
- Mounting plate only needed when replacing CFTH mechanisms, not to be used for replacing MFUS(P) mechanisms
- Mounting instruction

Mounting

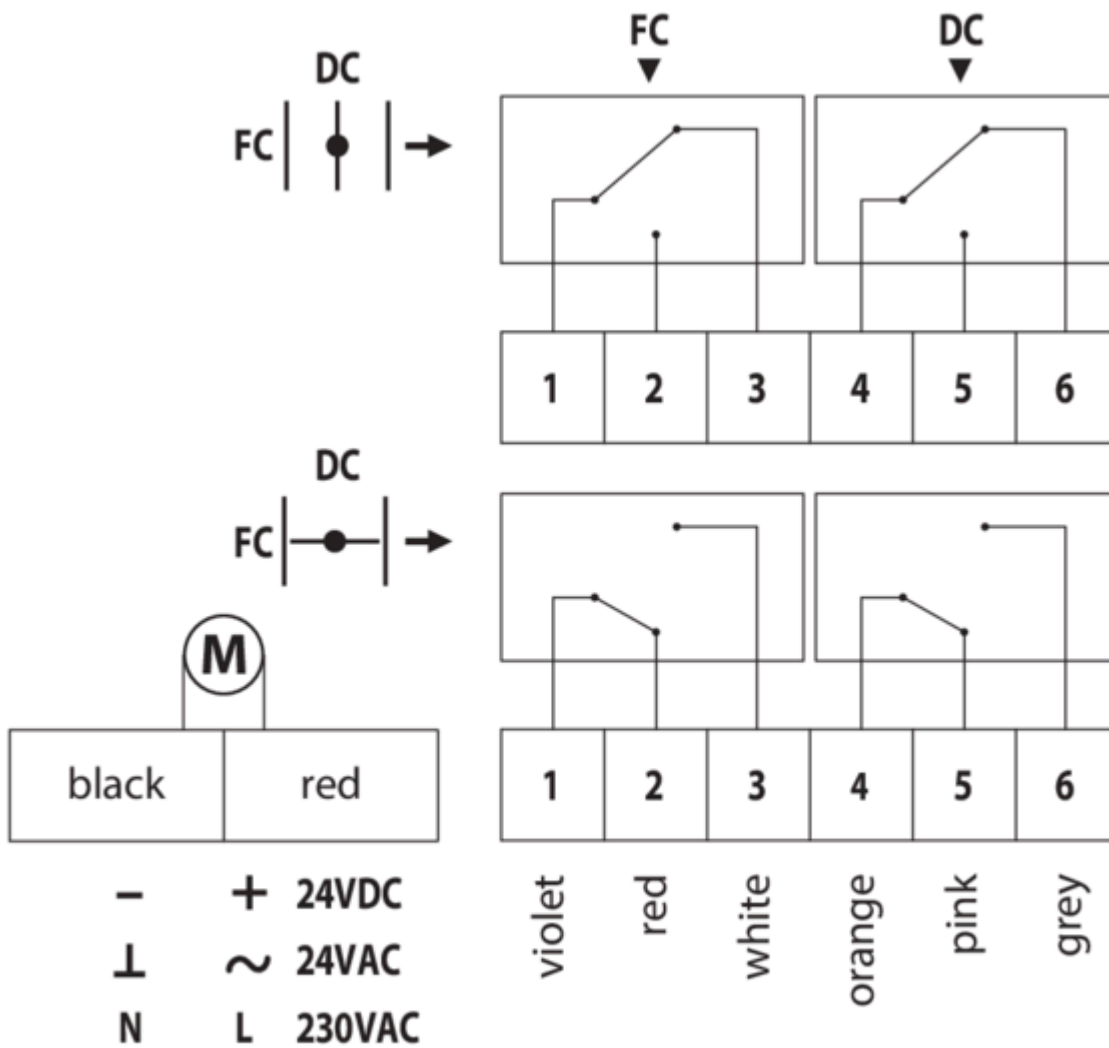
- According included mounting instruction

Specifications

ONE T ... FDCU TYPE:

- Torque motor + spring return: 7 Nm
- Voltage **ONE T 24 FDCU**: 24V AC/DC
 - Power (in rest): 0.28 W
 - Power (in use): 4.2 W
- Voltage **ONE T 230 FDCU**: 230V AC
 - Power (in rest): 0.57 W
 - Power (in use): 4.2 W
- Regulation: open/close with spring return
- Equipped with a thermo-electrical fuse, duct temperature 72°C
- Integrated start switch and circuit breaker
- Running time motor wired: <75s
- Running time motor with battery 9V: <85s
- Running time spring: <30s
- Protection class: IP54
- Cable cross-section: 0.75 mm²
- Switches: max 1A 60V

Electrical connection



DC : Switch open position fire damper

FC : Switch closed position fire damper