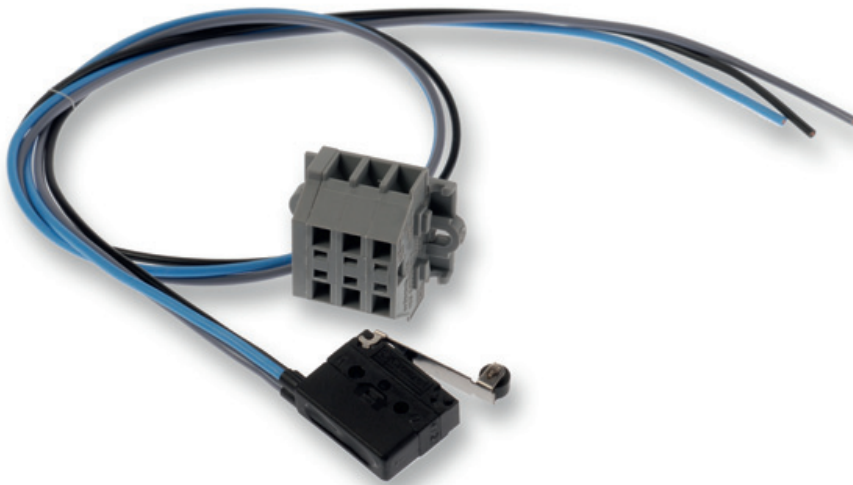


**FDC CFTH**

- Accessories for fire dampers
- Start/end of range switch
- For CR2 and CU2 with CFTH



Begin/end of range switch for CFTH type FDC CFTH

Begin or end of range switch for CR2 and CU2 with CFTH mechanism (Available in KIT or premounted as end-switch when ordered with fire dampers)

Composition

- 3 wires: black (COM), grey (NF), blue (NO)
- Microswitch in IP65 housing (COM and NF connected when not switched, COM and NO connected when switched)

Order example

- **KIT FDC CFTH**

Explanation

KIT FDC CFTH = End of range switch for CFTH mechanism (delivered separately)

Specifications

Position switches : 1 mA...6A DC 5V...AC250V

Ambient temperature : -30°C up to 50°C

Maintenance : Maintenance free

Electrical connection