



E.01

Fire dampers

**CR60+MFUS**

- Fire dampers
- Circular
- EI60S
- With fuse 72°C
- Ø 100 - 315



## Circular fire dampers EI60S type CR60+MFUS

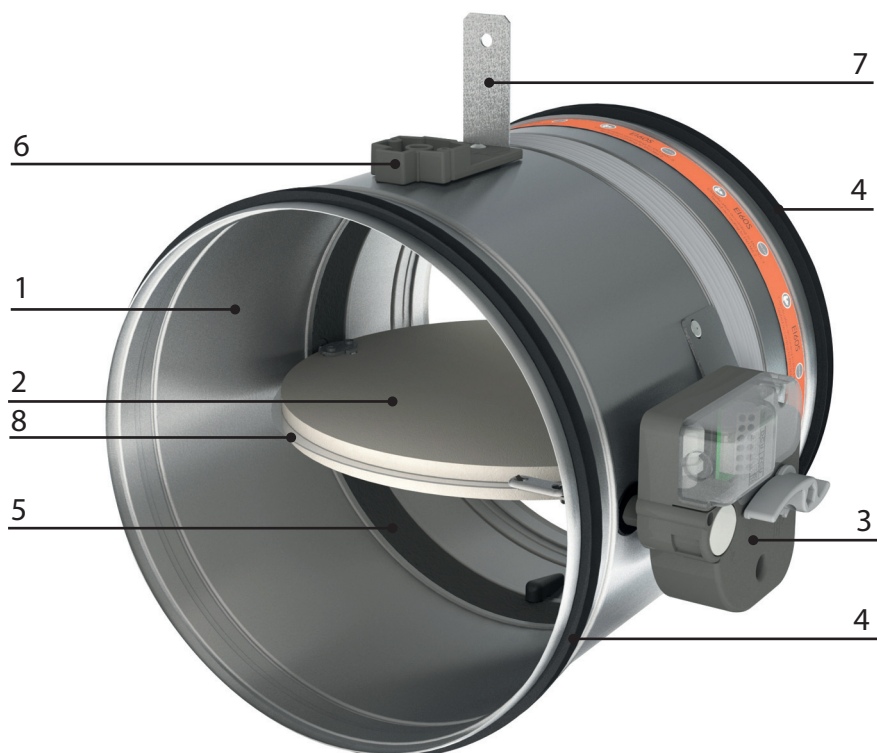
Circular fire dampers with a fire resistance of 1 hours. When the temperature in the damper rises above 72 °C the fusible link will break and the damper will close. When closed, the expanding material around the fireblade will swell and assure a fire and air-tight seal against hot air and smoke. The tunnel is made out of galvanized steel. The **CR60 + MFUS** fire dampers have a manual operating mechanism with indication of the blade position. Optionally, an end and begin of range switch **FDCU MFUS** can be added to the mechanism. The operating mechanism can be removed easily, for inspection purposes or for replacing the fusible link.

### Application

- Fire compartmentation
- To close and seal off ventilation ducts in case of fire
- For air temperatures of -10°C up to temperature of fusible link
- For air with RV 0-96%
- Range of Ø100 up to Ø315 mm
- To be mounted horizontally or vertically

### Material

- Galvanized steel

**Construction**

**Composition**

- Galvanized steel tunnel with rubber duct sealing
- Fibersilicate fireproof blade
- Intumescent strip
- Manual control mechanism MFUS with fusible link 72 °C
  
- 1. Refractory casing (made out of galvanised steel)
- 2. Damper blade
- 3. Operating mechanism
- 4. Rubber sealing ring
- 5. Intumescent strip
- 6. Mounting plate for thermo-electrical fuse (not used on manually controlled dampers)
- 7. Positioning plate
- 8. Sealing ring damper blade

**Mounting**

- To be inserted in fire resistant walls or floors and to be fixed according to the mounting instruction delivered with the valves.
- To be connected with round air ducts

**Certification**

- Classified EI90(v<sub>e</sub>,h<sub>o</sub> i<->o)S at 300Pa according EN 13501-3 in rigid wall and rigid floor.
- Classified EI60(v<sub>e</sub> i<->o)S at 500Pa according EN 13501-3 in flexible wall.
- Certified with test report Efectis 07-A-057 / EFR-19-005411 or WFRG 16126
- Airtight EN 1751 class C
- CE marked

**Accessories**

- Fire resistant plaster, type **BP**
- End- and begin of range switch, type **FDCU MFUS**

**Other available products**

- For bigger sizes see **CR2 + CFTH**



**Text for tender**

- The fire dampers shall be of the round type with a fire resistance of 60 minutes, certified according to EN13501-3 . They will consist of a galvanized steel tunnel and fireproof fiber silicate valve. The control mechanism will be manually operated and shall have a blade position indicator and fusible link of 72 °C
- type **CR60 + MFUS**

**Order example**

- **CR60 + MFUS, 160**

Explanation

**CR60** = Round fire damper

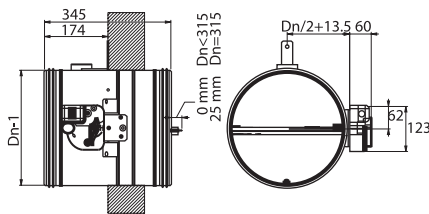
**MFUS** = Mechanism

**160** = Connection diameter

Quick selection							
Dia	v	3	4	5	6	7	8
100	Q	85	113	141	170	198	226
	Vk	5	6.7	8.3	10	11.7	13.4
	Ps	5	8	13	19	26	33
	Lw(A)	41	45	47	50	52	54
125	Q	132	177	221	265	309	353
	Vk	4.5	6	7.5	9	10.5	12
	Ps	4	7	11	16	21	28
	Lw(A)	38	43	46	48	51	52
150	Q	191	254	318	382	445	509
	Vk	4.1	5.5	6.9	8.3	9.7	11
	Ps	3	6	9	13	18	23
	Lw	38	42	45	47	50	52
160	Q	217	289	362	434	506	579
	Vk	4	5.4	6.7	8.1	9.4	10.8
	Ps	3	5	8	12	16	22
	Lw(A)	37	41	44	46	49	51
180	Q	275	366	458	549	641	732
	Vk	3.9	5.2	6.5	7.8	9.1	10.4
	Ps	3	5	7	10	14	18
	Lw	37	41	44	46	48	51
200	Q	339	452	565	678	791	904
	Vk	3.8	5.1	6.3	7.6	8.9	10.1
	Ps	2	4	6	9	12	16
	Lw(A)	37	41	43	46	48	50
250	Q	530	707	883	1060	1236	1413
	Vk	3.6	4.8	6	7.2	8.4	9.6
	Ps	2	3	4	6	9	11
	Lw	36	40	43	45	47	49
300	Q	763	1017	1272	1526	1780	2035
	Vk	3.5	4.7	5.8	7	8.2	9.3
	Ps	1	2	3	4	6	7
	Lw(A)	35	39	43	44	46	47
315	Q	841	1122	1402	1682	1963	2243
	Vk	3.5	4.6	5.8	7	8.1	9.3
	Ps	1	2	3	4	5	7
	Lw(A)	35	39	43	44	46	47

**Symbols and specifications**

- v = Air velocity in the duct in m/s
- Q = Air volume in m<sup>3</sup>/h
- Vk = Effective velocity through the damper in m/s
- Ps = Static pressure in Pa
- Lw(A) = Acoustic power in dB(A)
- Dia = Duct diameter in mm



CR60+MFUS	Dimensions			
	ØD [mm]	ØD-1 [mm]	1/2ØD+13.5*60 [mm]	Ak [m²]
100	100	99	123.5	0.0047
125	125	124	136	0.0082
150	150	149	148.5	0.0128
160	160	159	153.5	0.0149
180	180	179	163.5	0.0195
200	200	199	173.5	0.0248
250	250	249	198.5	0.0407
300	300	299	223.5	0.0605
315	315	314	231	0.0672