

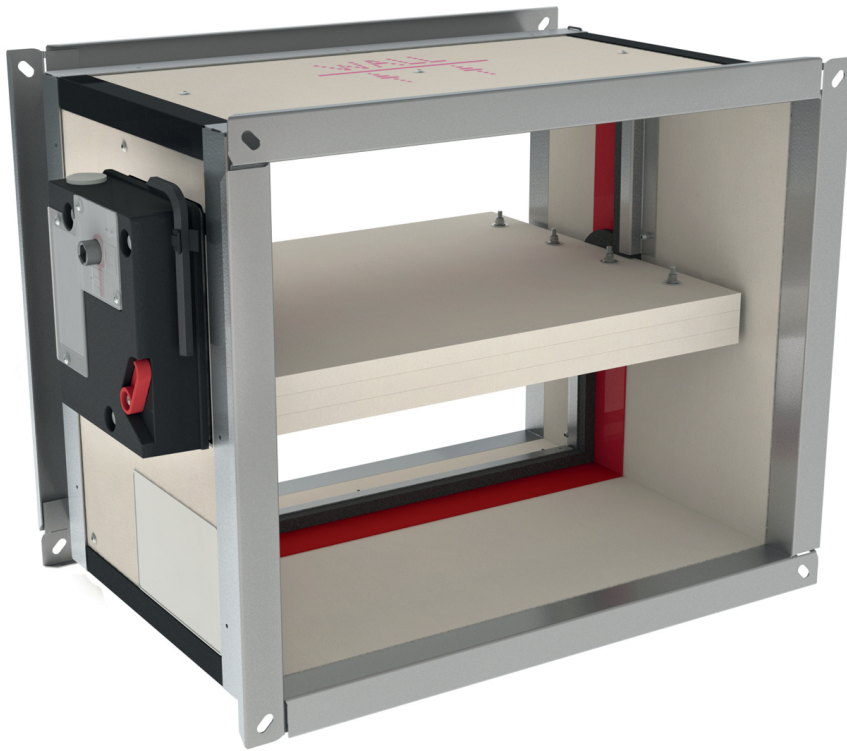


E.01

Fire dampers

**CU2+CFTH**

- Fire dampers
- Rectangular
- EI120S
- With fuse 72°C
- LxH: 200x200 - 1500x500



## Rectangular fire dampers EI120S type CU2+CFTH

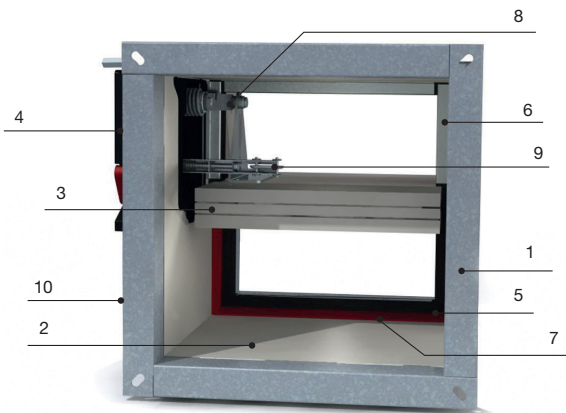
Rectangular fire dampers with a fire resistance of 2 hours. When the temperature in the damper rises above 72 °C the fusible link will break and the damper will close. When closed, the 'palusol' expanding material around the fireblade will swell and assure a fire and air-tight seal against hot air and smoke. The tunnel and blade are made out of fire resistant PromatectH®. The **CU2 + CFTH** fire dampers have a manual operating mechanism with indication of the blade position. Optionally, an end or begin of range switch **FDC CFTH** can be added to the mechanism. The operating mechanism can be removed easily, for inspection purposes or for replacing the fusible link.

### Application

- Fire compartmentation
- To close and seal off ventilation ducts in case of fire
- For air temperatures of -10°C up to temperature of fusible link
- For air with RV 0-96%
- Range from 200 to 1500 mm in width and 200 to 800 mm in height

### Material

- PromatectH®

**Construction**

**Composition**

- Light-weight PromatectH® fireproof housing
  - PromatectH® fireproof blade
  - Palusol seal around the blade
  - Manual control mechanism CFTH with fusible link 72 °C
  - Standard equipped with duct connection flanges of 30mm (other flange types available upon request)
- 
- 1. Connection flange
  - 2. Casing out of refractory material
  - 3. Damper blade
  - 4. Operating mechanism
  - 5. Sealing cold smoke
  - 6. Blade bumper
  - 7. Intumescent strip
  - 8. Transmission with locking (open/closed)
  - 9. Fusible link 72°C
  - 10. Product identification

**Mounting**

- To be inserted in fire resistant walls or floors and to be fixed with fireproof mortar
- To be connected with rectangular air ducts by flanges of 30mm

**Accessories**

- Fire resistant plaster **BP**
- Fire resistant silicone gel **FP402**
- Fire resistant PU-foam **BAP**
- End- or begin of range switch **FDC CFTH** (available as KIT or premounted)

**Text for tender**

- The fire dampers shall be of the rectangular type with a fire resistance of 2 hours, certified according to NEN6077 / NBN 713-0 0 / EN 1366-2 . They will consist of a fireproof PromatectH® tunnel and valve. The control mechanism will be manually operated and shall have a blade position indicator and fusible link of 72 °C
- type **CU2 + CFTH**



**Available dimensions**

H/L	200	250	300	350	400	450	500	550	600	650	700	750	800	850	900	950	1000	1050	1100	1150	1200	1250	1300	1350	1400	1450	1500	
200																												
250																												
300																												
350																												
400																												
450																												
500																												
550																												
600																												
650																												
700																												
750																												
800																												
850																												
900																												
950																												
1000																												

■ CU2 + CFTH, CU2 + MANO EVO, CU2 + MANO EVO + ME

**Order example**

■ **CU2 + CFTH, 400, 200**

Explanation

**CU2** = Rectangular fire damper Rf2h

**CFTH** = Mechanism

**400** = Length damper

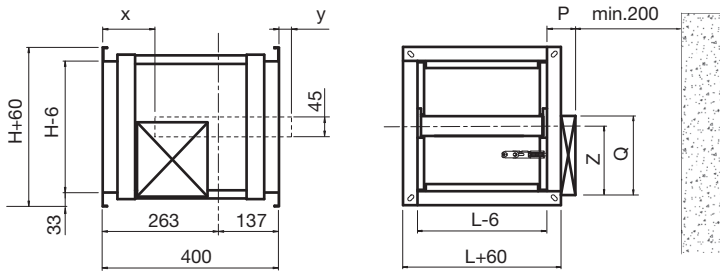
**200** = Height damper





### Symbols and specifications

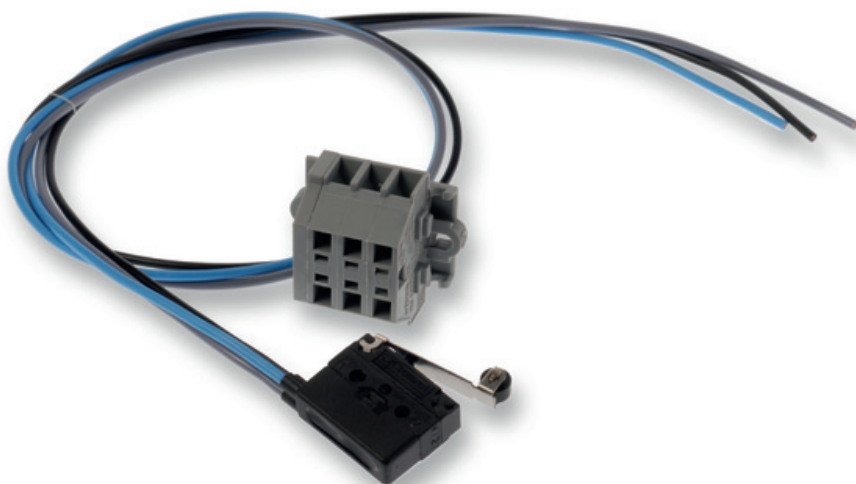
- $A_{eff}$  = Effective area in  $m^2$
- $v$  = Air velocity in the duct in  $m/s$
- $Q_v$  = Air volume in  $m^3/h$
- $v_{eff}$  = Effective velocity through the damper in  $m/s$
- $P_s$  = Static pressure in  $Pa$
- $L_w$  = Acoustic power in  $dB(A)$
- $LXH$  = Duct size in  $mm$



	Dimensions				x	y
	P	Q	Z (H<300)	Z (H>=300)		
CU2 + CFTH	65	180	60	155	$= (H/2) - 274$	$= (H/2) - 148$
MANO EVO (+ME)	115	190	85	180	$= (H/2) - 274$	$= (H/2) - 148$

**FDC CFTH**

- Accessories for fire dampers
- Start/end of range switch
- For CR2 and CU2 with CFTH



## Begin/end of range switch for CFTH type FDC CFTH

Begin or end of range switch for CR2 and CU2 with CFTH mechanism (Available in KIT or premounted as end-switch when ordered with fire dampers)

### Composition

- 3 wires: black (COM), grey (NF), blue (NO)
- Microswitch in IP65 housing (COM and NF connected when not switched, COM and NO connected when switched)

### Order example

- **KIT FDC CFTH**

Explanation

**KIT FDC CFTH** = End of range switch for CFTH mechanism (delivered separately)

### Specifications

Position switches : 1 mA...6A DC 5V...AC250V

Ambient temperature : -30°C up to 50°C

Maintenance : Maintenance free

### Electrical connection

