

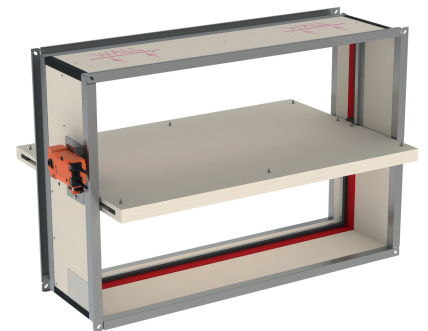
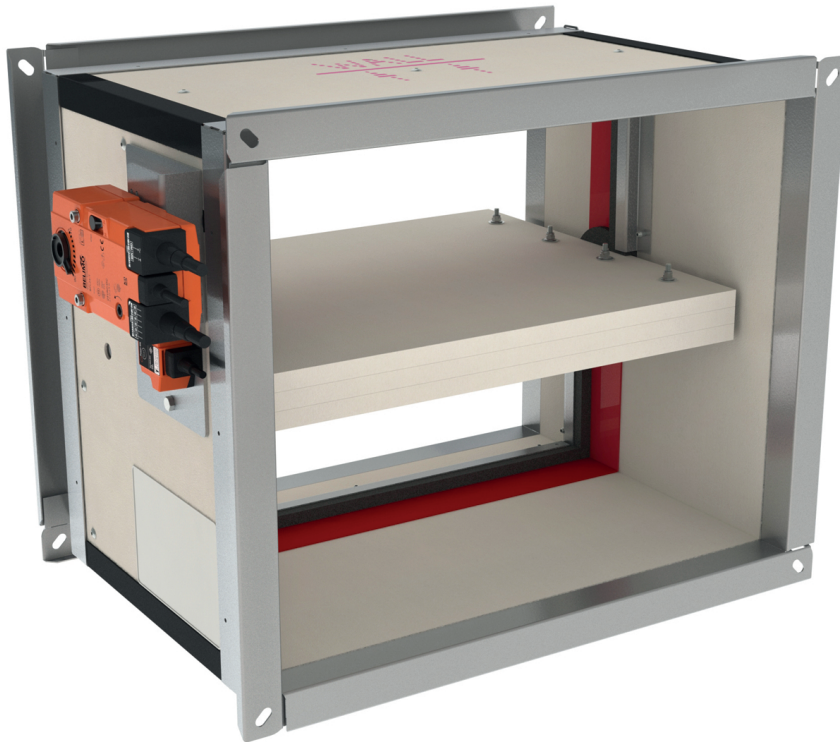


E.01

Fire dampers

**CU2+BFLT/
BFNT 24**

- Fire dampers
- Rectangular
- EI120S
- Motorized
- BELIMO 24V
- LxH: 200x100 – 1500x500



Motorized rectangular fire dampers EI120S type CU2+BFLT/BFNT 24

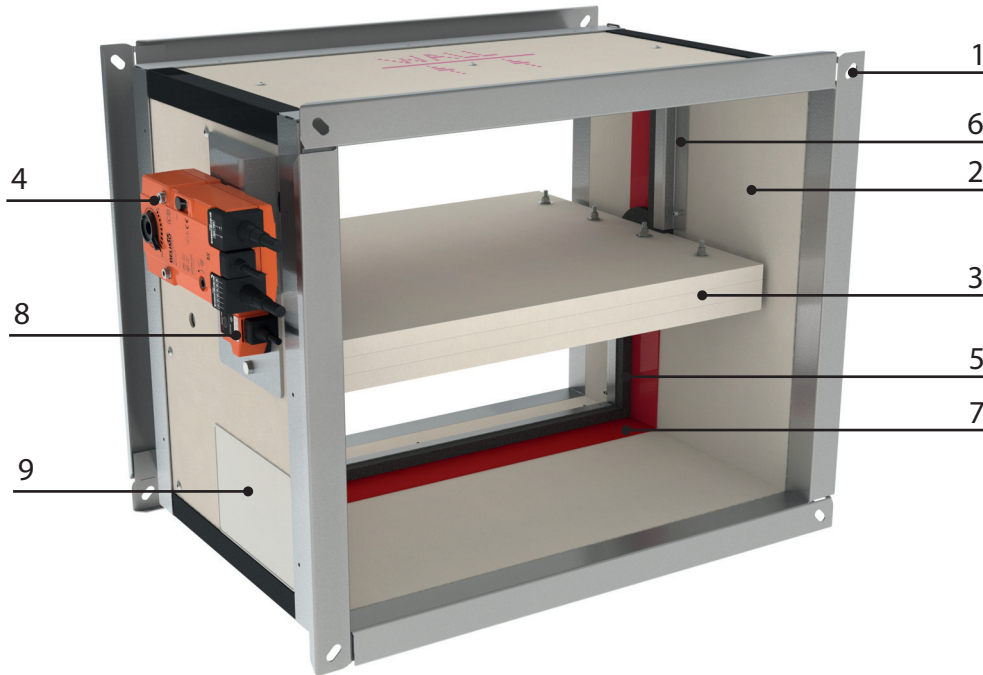
Rectangular fire dampers with a fire resistance of 2 hours. When the temperature in the damper rises above 72 °C the thermo-electrical link gets triggered and the damper will close. When closed, the 'palusol' expanding material around the fireblade will swell and assure a fire and air-tight seal against hot air and smoke. The tunnel and blade are made out of fire resistant PromatectH®. The **CU2 + BFLT/ BFNT 24** fire dampers will have an automatic operating mechanism by means of an actuator with indication of the blade position. An end and begin of range switch is included within the actuator.

Application

- Fire compartmentation
- To close and seal off ventilation ducts in case of fire
- For air temperatures of -10°C up to temperature of fusible link
- For air with RV 0-96%
- Range from 200 to 1500 mm in width and 200 to 800 mm in height

Material

- PromatectH®

Construction

Composition

- light-weight PromatectH® fireproof housing
 - PromatectH® fireproof blade
 - Palusol seal around the blade
 - Actuator BELIMO BLFT24 (small dimensions) or BFNT24 (Other sizes)
 - Standard equipped with duct connection flanges of 30mm (other flange types available upon request)
-
- 1. Connection flange
 - 2. Casing out of refractory material
 - 3. Damper blade
 - 4. Operating mechanism
 - 5. Sealing cold smoke
 - 6. Blade bumper
 - 7. Intumescent strip
 - 8. Thermo-electrical link 72°C
 - 9. Product identification

Mounting

- To be inserted in fire resistant walls or floors and to be fixed with fireproof mortar
- To be connected with rectangular air ducts by flanges of 30mm

Accessories

- Fire resistant plaster **BP**
- Fire resistant silicone gel **FP402**
- Fire resistant PU-foam **BAP**

Text for tender

- The fire dampers shall be of the rectangular type with a fire resistance of 2 hours, certified according to NEN6077 / NBN 713-0 0 / EN 1366-2 . They will consist of a fireproof PromatectH® tunnel and valve. The control mechanism will be automatically operated by means of an actuator and shall have a blade position indicator and thermo-electrical link of 72 °C
- type **CU2 + BFLT/BFNT24**

Order example

- **CU2 + BFLT24, 400, 200**

Explanation

CU2 = Rectangular fire damper Rf2h

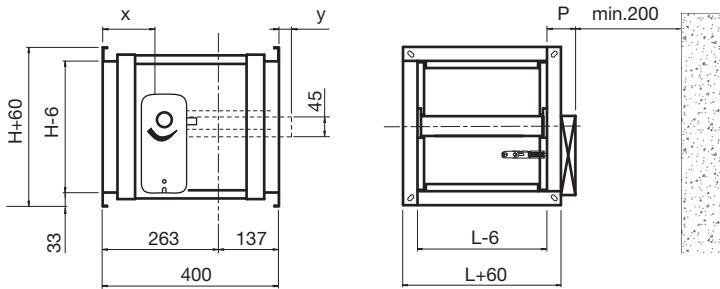
BFLT24 = Actuator 24V with thermo-electric fuse

400 = Length damper

200 = Height damper

Symbols and specifications

- A_{eff} = Effective area in m^2
- v = Air velocity in the duct in m/s
- Q_v = Air volume in m^3/h
- v_{eff} = Effective velocity through the damper in m/s
- P_s = Static pressure in Pa
- L_w = Acoustic power in $dB(A)$
- LXH = Duct size in mm



	Dimensions				
	P	Q	Z (H<300)	Z (H>=300)	y
CU2 + BFLT/BFNT 24	110	210	80	180	$=(H/2)-184$

Electrical connection

