

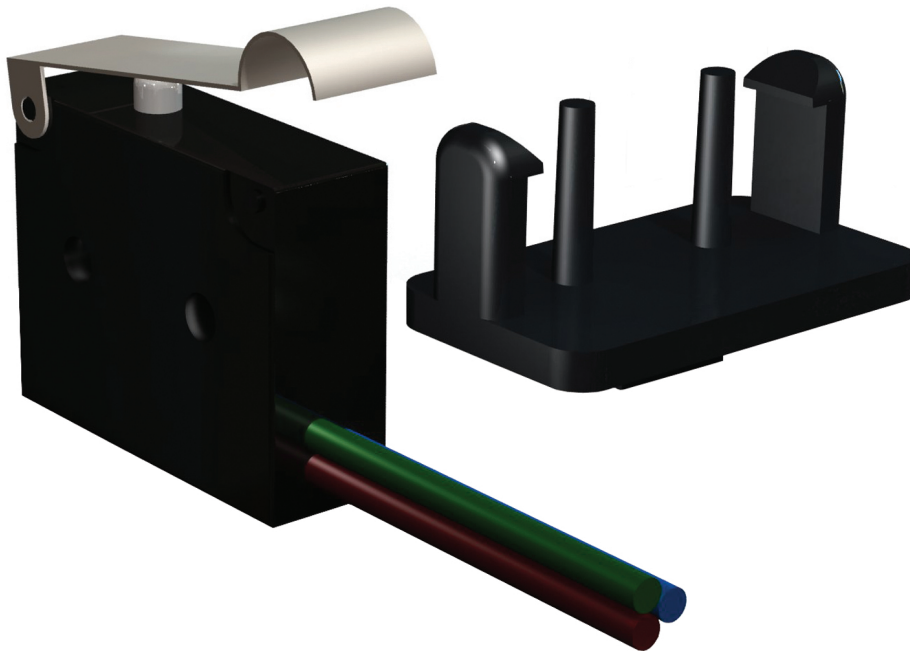


E.01

Fire dampers

FCU SC

- Accessories for fire dampers
- Start/end of range switch
- For SC dampers



Begin or end of range switches for SC type FCU SC

Begin or end of range switches for SC butterfly dampers
pre-mounted **FCU SC** or delivered separately **KIT FCU SC**

Composition

- 3 wires: black (COM), grey (NF), blue (NO)
- Microswitch in IP65 housing (COM and NF connected when not switched, COM and NO connected when switched)
- Mounting socket

Mounting

- See drawing

Order example

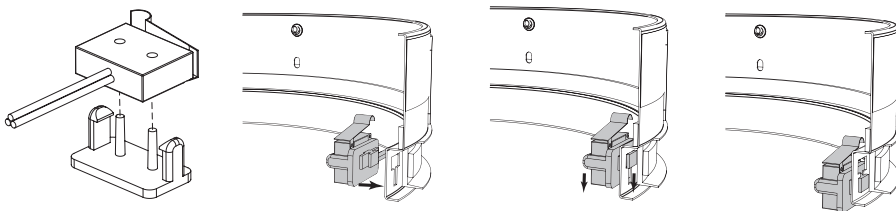
- **KIT FCU SC**

Explanation

KIT FCU SC = End of range switch for **SC** fire resistant butterfly dampers

Specifications

- Position switches : 1 mA...6A DC 5V...AC250V
- Ambient temperature : -30°C up to 50°C
- Maintenance : Maintenance free





Electrical connection

