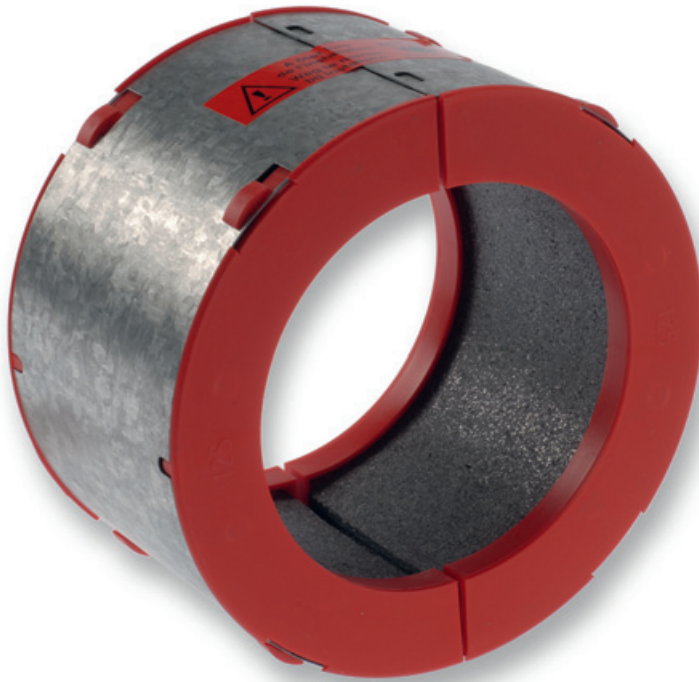




- Fire resistant collars for sanitary pipes in PVC, PP and PE
- Rf2h
- EN1366-3
- In-wall mounted



## Fire resistant collars type MG2

Fire resistant collars **MG2** can be installed around plastic pipes that are passing through a construction element, in order to prevent the propagation of fire. For plastic pipes made out of PVC, PP or PE. Can be mounted in wall, ceiling or floor. The **MG2** collar can easily be folded around the piped and closed by the fastener

### Application

- Fire compartmentation, more particular for sanitary installations
- Closing plastic pipes in case of fire
- Mounted in concrete or light wall, ceiling or floor
- Fire resistant up to 2 hours
- Range: 40-50-56-63-75-80-90-100-110-125-160 mm

### Material

- Galvanized steel body with swelling fire resistant material

### Composition

- Fire resistant collar **MG2**
- Metallic housing
- Fastener

### Mounting

- Installation method: build-in
- To be mounted around PVC-PP-PE pipes passing through fire resistant construction elements
- To be sealed with **FP402**, **BAP** or **BP** sealants

### Certification

- Tested according European standard EN 1366-3
- Classification according European standard EN 13501-2
- U/C (uncapped/capped), C/C (capped/capped)

### Accessories

- Fire resistant plaster, type **BP**
- Fire resistant silicone, type **FP402**
- Fire resistant PU foam, type **BAP**



**Text for tender**

- Fire resistant collar **MG2** cast into the wall and installed around plastic sanitary pipes passing trough a construction element in order to prevent propagation of fire. 100% free passage. For pipes in PVC-PP-PE. Cast into the wall. Fire resistance up to 2 hours
- CAIROX
- type **MG2**

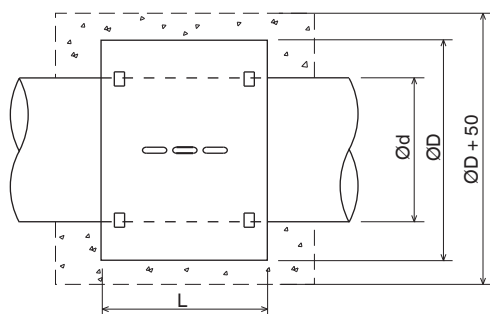
**Order example**

- **MG2, 90**

Explanation

**MG2** = Type of fire resistant collar

**90** = Plastic sanitary pipe diameter



| Dimensions |    |    |    |    |     |     |     |     |     |     |     |
|------------|----|----|----|----|-----|-----|-----|-----|-----|-----|-----|
|            | 40 | 50 | 56 | 63 | 75  | 80  | 90  | 100 | 110 | 125 | 160 |
| Ød [mm]    | 40 | 50 | 56 | 63 | 75  | 80  | 90  | 100 | 110 | 125 | 160 |
| ØD [mm]    | 67 | 77 | 83 | 90 | 102 | 123 | 133 | 143 | 153 | 182 | 215 |
| L [mm]     | 85 | 85 | 85 | 85 | 85  | 85  | 85  | 85  | 85  | 105 | 105 |