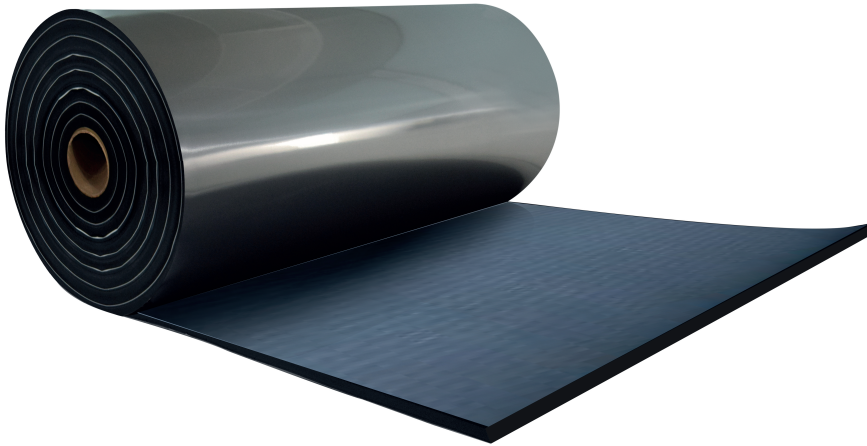


- Synthetic rubber
- Self adhesive



Self adhesive insulation in synthetic rubber with alu protection on a roll type ERI CLAD ADH

ERI self adhesive closed cells insulation with protective E-CLAD sheet
Ideal for insulation of ventilation duct in- and outdoors with aesthetic aluminium finish

Colour

- Alu

Composition

- Synthetic rubber with closed cell structure ERI
- Self-adhesive layer ADH
- E-CLAD protective aluminium foil

Characteristics

- ERI:
 - Heat conductivity
 - 0.034 W/mK at -10°C
 - 0.035 W/mK at 0°C
 - 0.037 W/mK at 10°C
 - Water vapour diffusion resistance $\mu \geq 10000$ according to EN12086 and EN13469
 - Excellent flexibility
 - Fungus and bacterial resistant
 - Corrosion risk DIN 1988/7, pH-7
 - Does not contain CFC, HCFC or asbestos
 - Good resistance to mineral and vegetable oils, benzene/ petroleum ether, diluted acids and bases.
 - Fire resistance Euroclass B,s3,d0 EN13501-1 / EN13823
 - Covering E-CLAD foil:
 - Surface cladding made of multi-layer material based on PE, PVC, Aluminium and PET
 - Can be used in most of the weather conditions, resistant to the sun, rain and UV.
 - Operation temperatures between -25 to 75°C, DIN EN 14706
 - Total weight approx. 340 g/m², EN 22286
 - Thickness 230µm
 - Tensile strength: MD 200N/15mm / CD 175N/15mm, EN ISO 527-3
 - Elongation: MD 48% / CD 51%, EN ISO 527-3
 - Tear Strength: MD 70N / CD 28N, EN ISO 527-3
- MD: Machine direction / CD: Cross direction
- Weather resistant testing ASTM G26A, ISO 4892-2

Certificates

- CE marked
- For the application in an outdoor installation, **ERI CLAD ADH** with a thickness of **25mm** can be combined with the **ERI ADH** with a thickness of **25mm** for thermal resistance of 1.5m².K/W, prescribed by the specifications 105 /2017 of the buildings Agency

Mounting

- To be wrapped around ducts and to be finished with butyltape **ASB PREMIUM**

Accessories

- **ERI CLEANER**: surface cleaner
- **ERI GLUE**: For the glueing of synthetic rubber foam in the joints
- **E-CLAD TAPE**: Special tape for connection with finishing of E-CLAD layers indoors
- **ASB PREMIUM**: Butyltape for connection with finishing of E-CLAD layers outdoors

Text for tender

- The thermal and acoustic insulation of the ducts will be done by means of self-adhesive closed cells synthetical rubber insulation with alu protective layer

Order example

- **ERI CLAD ADH, 25mm, 5x1m**

Explanation

ERI CLAD ADH = Type of insulation, self-adhesive

25mm = Insulation thickness

5x1m = Length x width of insulation roll