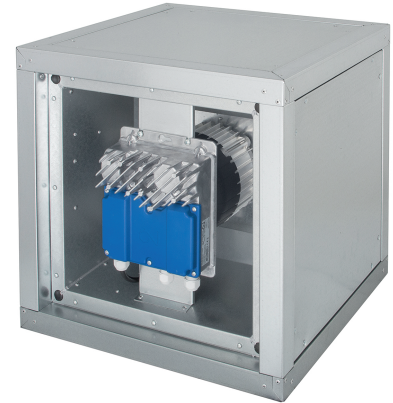
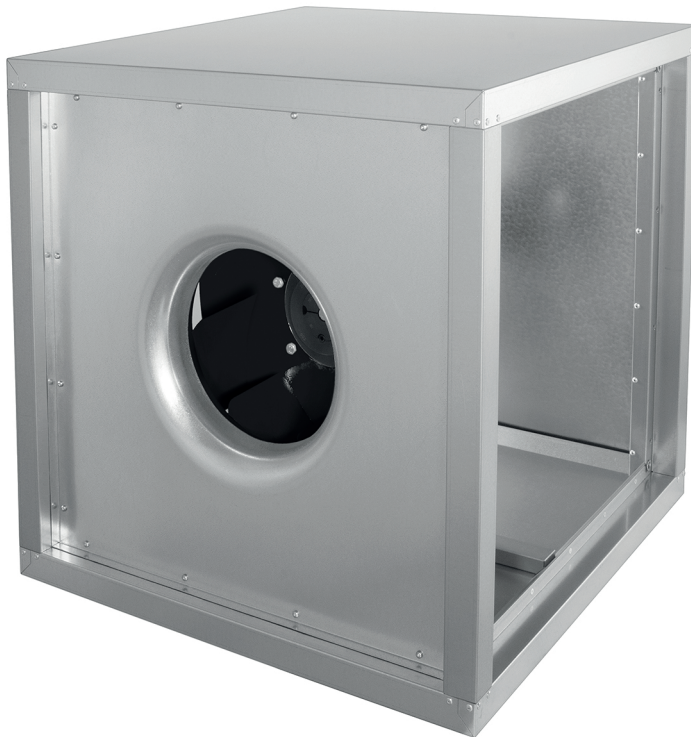


- Isolated fan casing
- Extractionfan for hood



Simple centrifugal suction boxfan with EC engine outside airflow type KBF-N EC T

Simple centrifugal suction boxfan with EC engine outside airflow

Application

- Used for extraction of industrial hoods and industrial exhaust systems up until 7600 m³/h

Composition

- Double walled galvanized casing with removable panels and lever included for:
 - Simple inspection of the engine
 - Change of discharge direction (left or up), standard version : right
- 30mm isolation with fireclass A1 according to DIN 4102-1
- Round and square intake, square outlet
- Condensation and grease draining
- EC-engine with internal electrical thermal safety device
- Voltage : 1ph 230Vac
- Engine outside the airflow (**type T**) – Engineside standard opened (to be equipped with engine protectionplate **MB KBF** or variant)
- Turbine with backwards curved blades
- Isolation class F
- Protecting class engine: IP54

Accessories

- Panel with round connection for KBF, type **USM**
- Roof tile for KBF-N, type **RD KBF**
- Rain hood with grill for KBF-N, type **WSH KBF**
- Engine protection plate for KBF-N, type **MB KBF**
- Base frame for KBF-N, type **GR KBF**
- Round/square transition pieces, type **RV**
- Fitting clamp, type **BMK**
- Potentiometers, type **ESCP010**
- Pressure difference regulators, type **DMD-C**

Alternative products

- Frequentation regulation simple suction centrifugal boxfans for hoods, type **KBF-N D T**
- Plug&play compensation- and pulsiongroups for kitchen application, type **EVENTYS 5**

Order example**KBF-N 225 EC T30 + ESCP010**

Explanation:

KBF-N = Fan type

EC = EC-engine

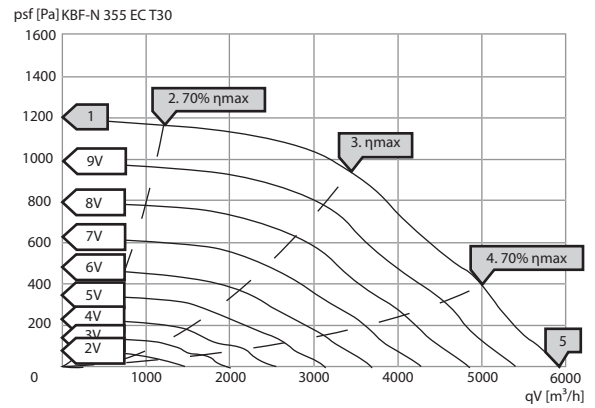
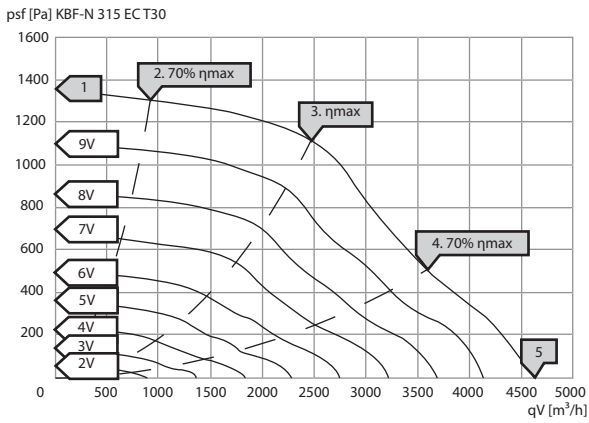
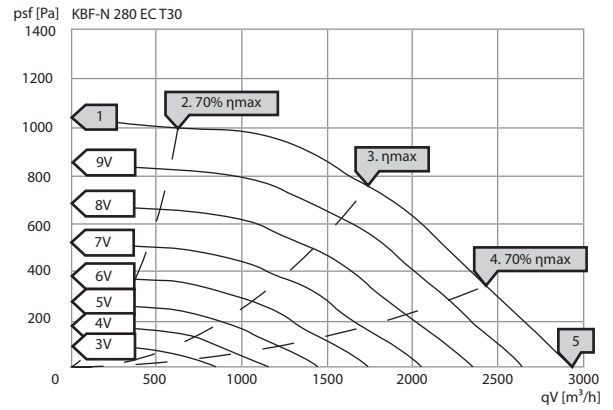
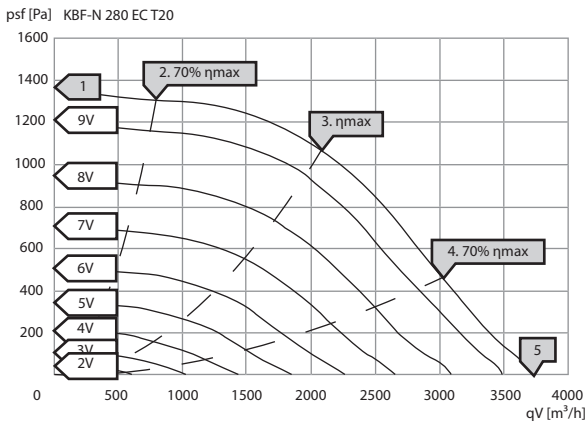
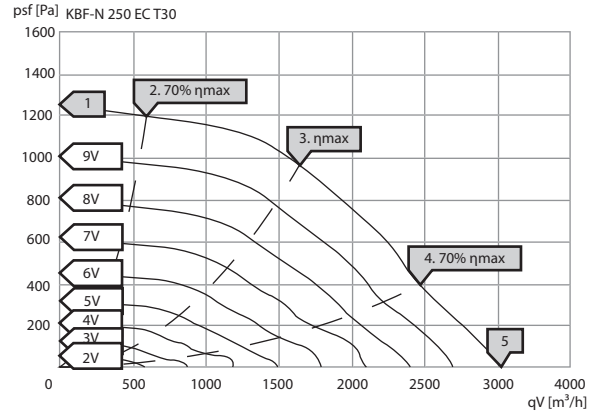
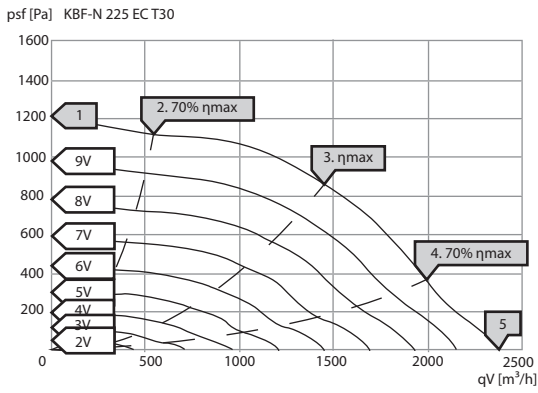
T = Engine outside airflow

30 = version

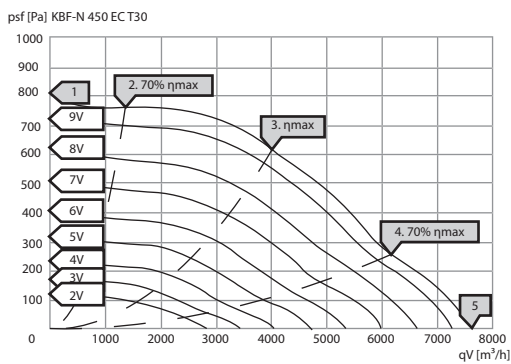
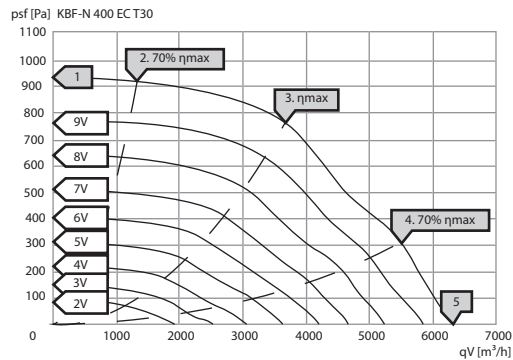
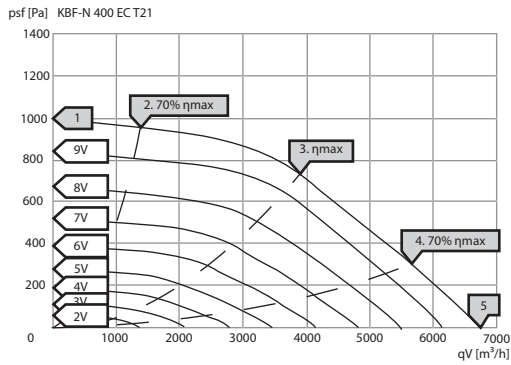
ESCP010 = potentiometer

| Air performance data | | | | | | | | | | | | |
|----------------------|-----------------------|--------|--------|--------|--------|--------|--------|--------|--------|---------|---------|---------|
| | Q [m ³ /h] | | | | | | | | | | | |
| | 100 Pa | 200 Pa | 300 Pa | 400 Pa | 500 Pa | 600 Pa | 700 Pa | 800 Pa | 900 Pa | 1000 Pa | 1100 Pa | 1200 Pa |
| KBF-N 225 EC T30 | 2275 | 2139 | 2031 | 1951 | 1871 | 1780 | 1672 | 1542 | 1380 | 1181 | 804 | - |
| KBF-N 250 EC T30 | 2900 | 2756 | 2599 | 2457 | 2347 | 2238 | 2090 | 1919 | 1756 | 1569 | 1300 | 571 |
| KBF-N 280 EC T30 | 2795 | 2641 | 2487 | 2336 | 2192 | 2053 | 1877 | 1629 | 1378 | 857 | - | - |
| KBF-N 315 EC T30 | 4474 | 4309 | 4089 | 3821 | 3580 | 3398 | 3230 | 3060 | 2904 | 2742 | 2509 | 2072 |
| KBF-N 355 EC T30 | 5643 | 5370 | 5161 | 4966 | 4682 | 4357 | 4086 | 3841 | 3573 | 3191 | 2478 | - |
| KBF-N 400 EC T30 | 6038 | 5763 | 5532 | 5127 | 4632 | 4285 | 3932 | 3370 | 1989 | - | - | - |
| KBF-N 450 EC T30 | 7219 | 6595 | 5878 | 5407 | 4844 | 4142 | 3300 | - | - | - | - | - |

Selection curves

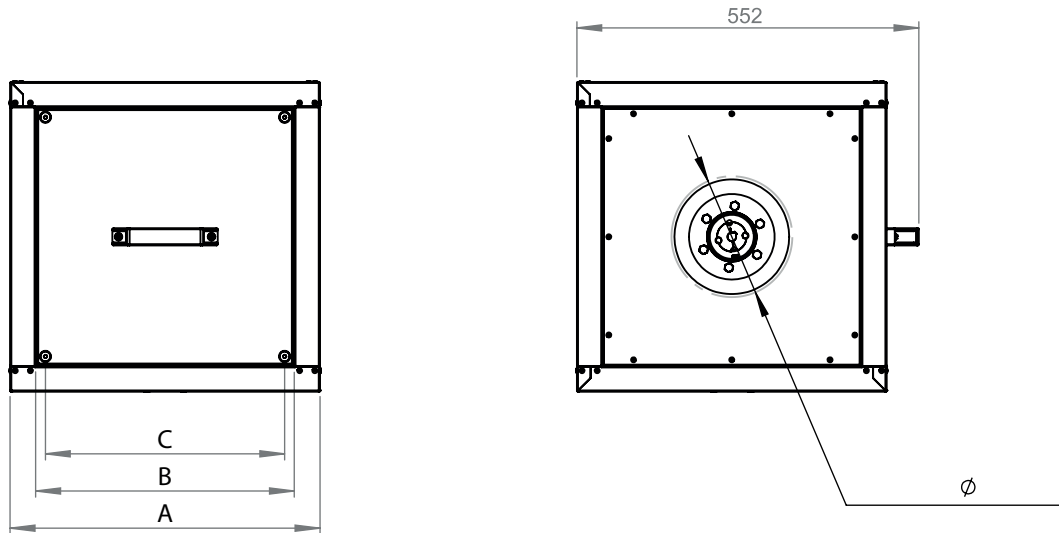


Selection Curves

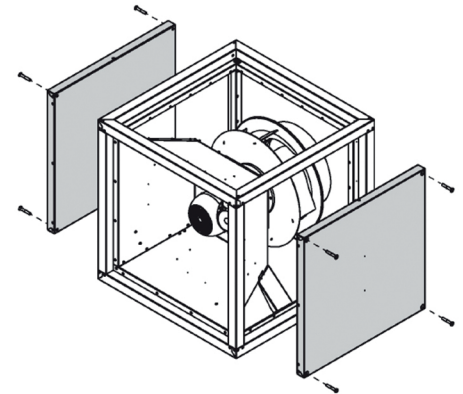
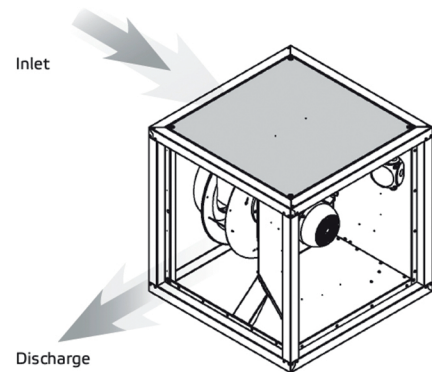


| | Technical data | | | | | | | | | Lwa [dB(A)] | | |
|------------------|----------------|-------|-------|-----------------|--------------------|---------------------|---------------------|---------------------|---------|-------------|-------|-------|
| | U [V] | P [W] | I [A] | SC _P | η _t [%] | T _m [°C] | T _u [°C] | T _o [°C] | n [rpm] | Lwa 5 | Lwa 6 | Lwa 2 |
| KBF-N 225 EC T30 | 1x230V | 687 | 3.2 | ESCP010 | 49.9 | 120 | 50 | -20 | 3980 | 86 | 92 | 80 |
| KBF-N 250 EC T30 | 1x230V | 840 | 3.88 | ESCP010 | 50.9 | 120 | 50 | -20 | 3660 | 88 | 95 | 81 |
| KBF-N 280 EC T30 | 1x230V | 765 | 3.56 | ESCP010 | 46.6 | 120 | 50 | -20 | 3000 | 89 | 95 | 81 |
| KBF-N 315 EC T30 | 1x230V | 1408 | 9.9 | ESCP010 | 43.3 | 120 | 50 | -20 | 3100 | 92 | 95 | 81 |
| KBF-N 355 EC T30 | 1x230V | 1500 | 10.73 | ESCP010 | 57.6 | 120 | 50 | -20 | 2550 | 90 | 93 | 75 |
| KBF-N 400 EC T30 | 1x230V | 1248 | 8.8 | ESCP010 | 58.1 | 120 | 50 | -20 | 2000 | 88 | 90 | 74 |
| KBF-N 450 EC T30 | 1x230V | 1238 | 8.79 | ESCP010 | 54.2 | 120 | 50 | -20 | 1640 | 86 | 88 | 72 |

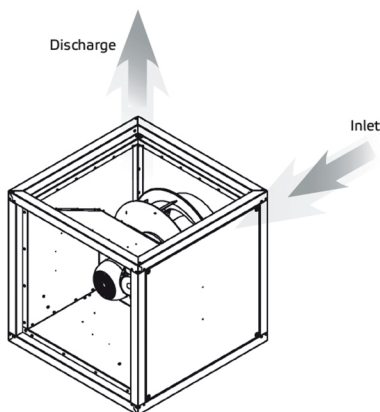
- SC_P = Potentiometer 0-10V
- η_t = Maximum total return
- T_m = Maximum airtemperature
- T_u = Maximum casing temperature
- T_o = Minimum working temperature
- Lwa 2 = Casing sound power level
- Lwa 5 = Sound power level @inlet
- Lwa 6 = Sound power level @outlet
- The sound power levels are measured according to DIN 45635 part 2 & 38



A discharge right (standard)



B discharge top



| | Dimensions | | | | |
|------------------|------------|--------|--------|----------|------|
| | A [mm] | B [mm] | C [mm] | Ø [mm] | Kg |
| KBF-N 225 EC T30 | 500 | 417 | 386 | min. 195 | 33 |
| KBF-N 250 EC T30 | 500 | 417 | 386 | min. 220 | 33 |
| KBF-N 280 EC T30 | 500 | 417 | 386 | min. 240 | 33.5 |
| KBF-N 315 EC T30 | 500 | 417 | 386 | min. 240 | 41 |
| KBF-N 355 EC T30 | 700 | 617 | 586 | min. 300 | 63 |
| KBF-N 400 EC T30 | 700 | 617 | 586 | min. 340 | 65 |
| KBF-N 450 EC T30 | 700 | 617 | 586 | min. 385 | 73 |