



## Centrifugal fans type VMI

Direct driven centrifugal fan

### Application

- VMI fans are used for air supply or exhaust of offices, restaurants or shops.

### Composition

- Casing in galvanized sheet steel
- Direct drive double inlet forward curved impeller
- Motor with overheat protection – Insulation class F – Protection IP44
- Supply: 230Vac 1ph or 400Vac 3ph
- Suitable for speed regulation
- Mounting profile included

### Accessories

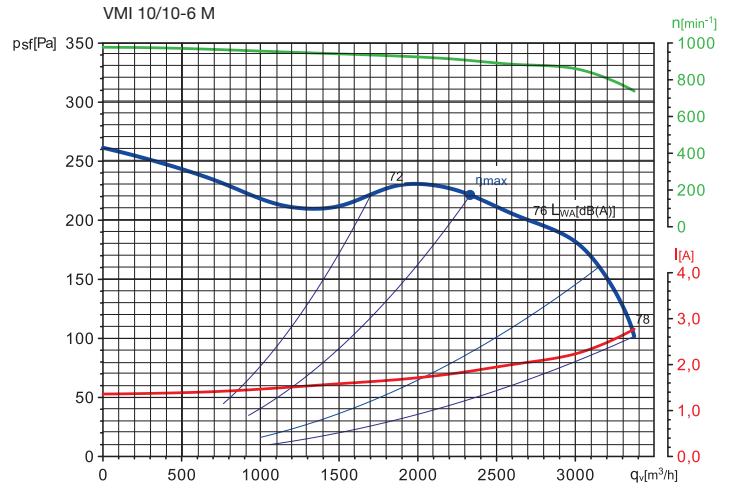
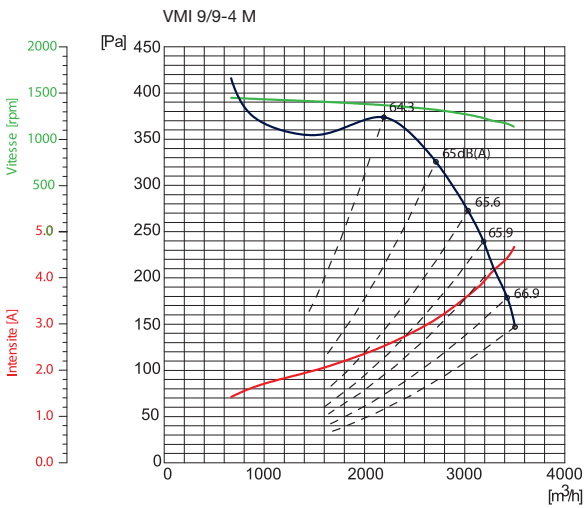
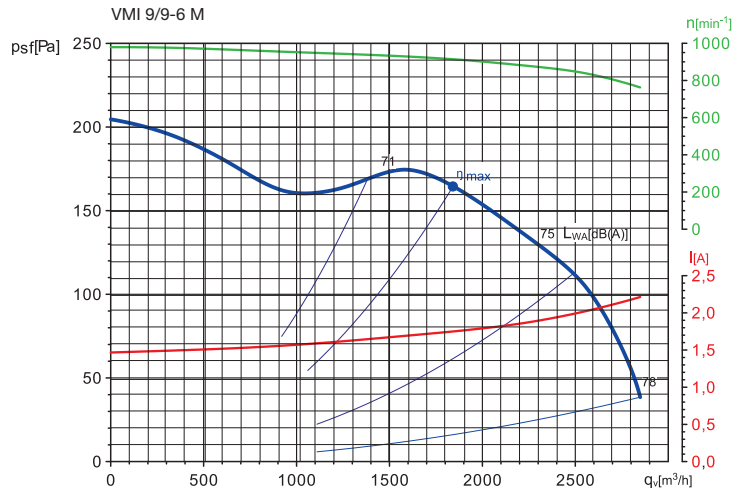
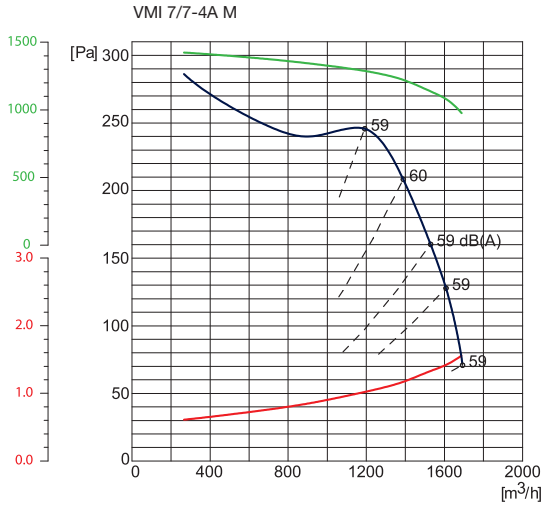
- Auto transformer, type **TSC-1**
- Auto transformer 3x400V, type **TSCTK-4**
- Frequency converter 230V in / 3x230V out, type **FIS(-C)-13-B**
- Frequency converter 3x400V in / 3x400V out, type **FIS(-C)-44-B**
- Outlet flanges, type **VMI FL**

	Air performance data														
	Q [m³/h]														
	50 Pa	100 Pa	150 Pa	200 Pa	250 Pa	300 Pa	350 Pa	400 Pa	450 Pa	500 Pa	550 Pa	600 Pa	650 Pa	700 Pa	750 Pa
VMI 7/7-4A M	-	1700	1650	1450	750	-	-	-	-	-	-	-	-	-	-
VMI 9/9-6 M	2800	2600	2100	-	-	-	-	-	-	-	-	-	-	-	-
VMI 9/9-4 M	-	-	3530	3375	3150	2800	2525	700	-	-	-	-	-	-	-
VMI 10/10-6 M	-	3350	3175	2750	350	-	-	-	-	-	-	-	-	-	-
VMI 12/9-6 M	-	-	-	4680	4150	3500	860	-	-	-	-	-	-	-	-
VMI 12/12-6 M	-	-	-	-	4850	2000	685	-	-	-	-	-	-	-	-
VMI 12/12-6 T	-	-	-	6550	5750	4680	1450	935	-	-	-	-	-	-	-
VMI 15/15-6 T	-	-	-	-	-	-	9000	6625	5000	1310	435	-	-	-	-

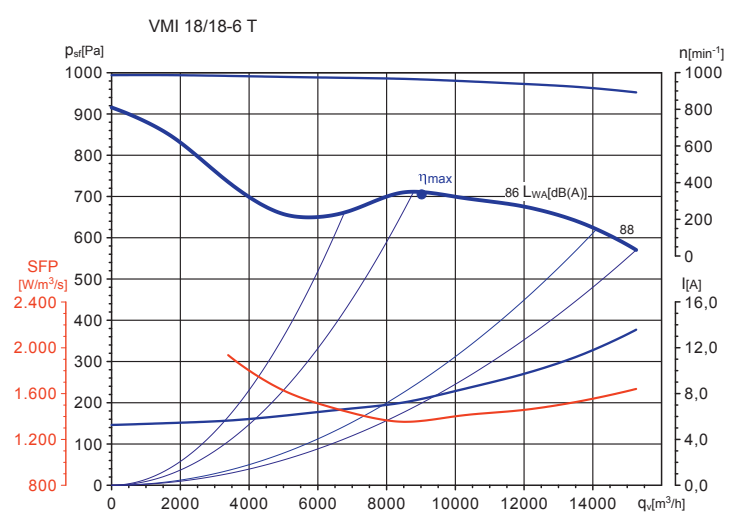
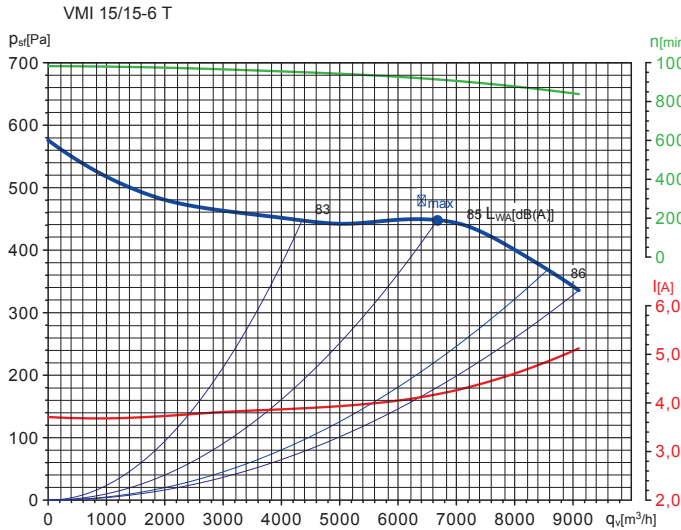
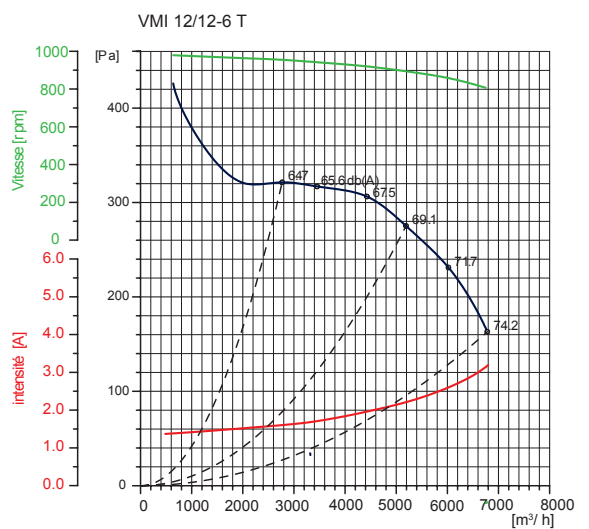
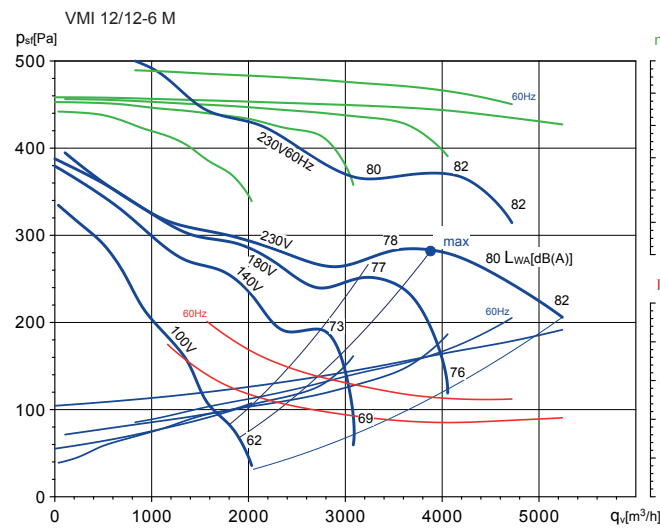
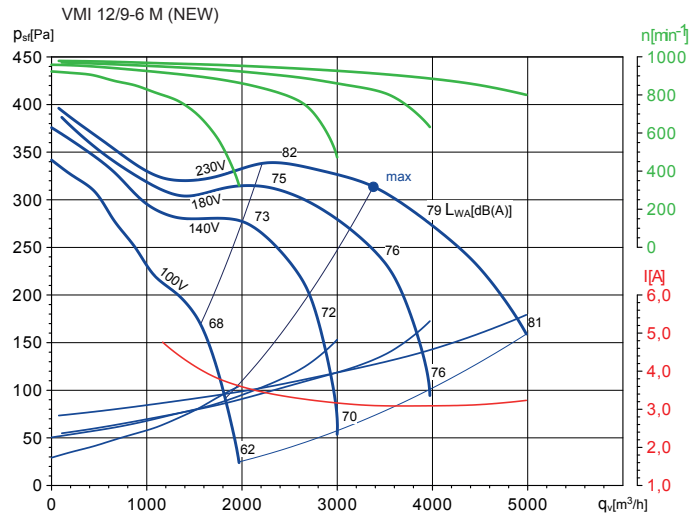
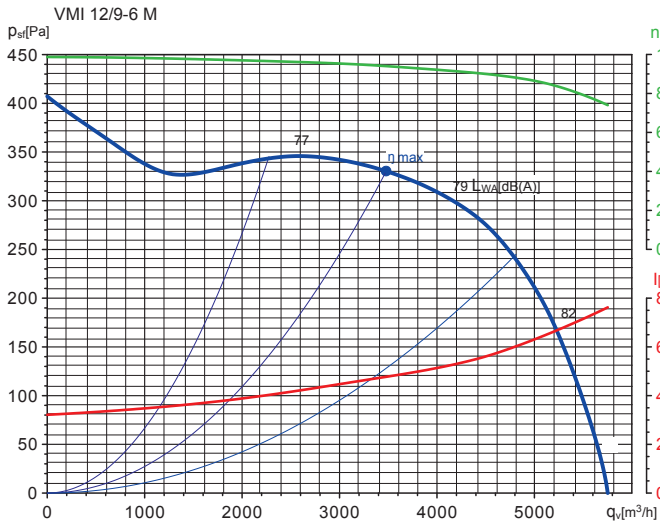
### Attention

The VMI fan may never be used with free inlet. There should be a minimal counter-pressure as indicated above. Please measure the current at first starting.

Selection curves



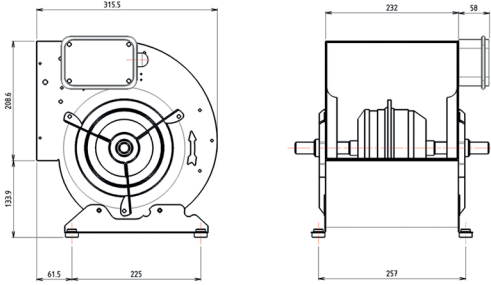
Selection curves



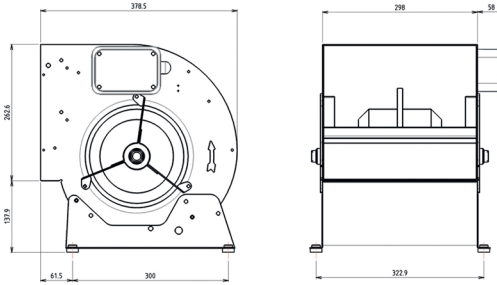
Technical data									
	U [V]	P [W]	I [A]	SC	T <sub>m</sub> [°C]	IP	n [rpm]	L <sub>pa</sub> max [dB(A)]	
VMI 7/7-4A M	1 x 230	147	1.6	TSC-1-22	40	55	1420	59	
VMI 9/9-6 M	1 x 230	245	2.2	TSC-1-40	40	55	960	78	
VMI 9/9-4 M	1 x 230	550	4.6	TSC-1-50	40	55	1420	67	
VMI 10/10-6 M	1 x 230	245	2.8	TSC-1-30	40	44	980	78	
VMI 12/9-6 M	1 x 230	750	5.5	TSC-1-70	40	55	913	79	
VMI 12/12-6 M	1 x 230	750	5.6	TSC-1-70	40	55	899	81	
VMI 12/12-6 T	3 x 230/400	1100	5.2 / 3	TSCTK-4-40 / FIS(C)-13-B / FIS(C)-44-B	40	44	980	74	
VMI 15/15-6 T	3 x 230/400	2200	8.83 / 5.1	TSCTK-4-70 / FIS(C)-13-B / FIS(C)-44-B	40	44	990	86	

- SC = Speed controller
- T<sub>m</sub> = Maximum air temperature
- L<sub>pa</sub> = Sound pressure level

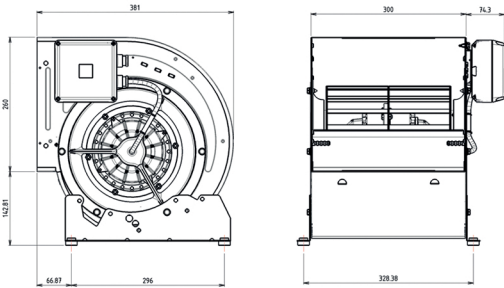
VMI 7/7-4A M



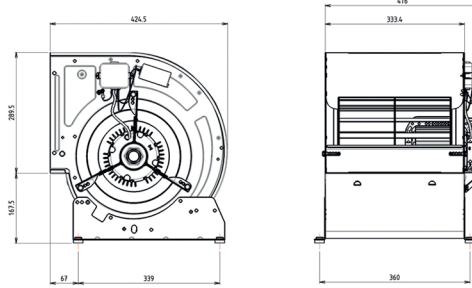
VMI 9/9-4 M



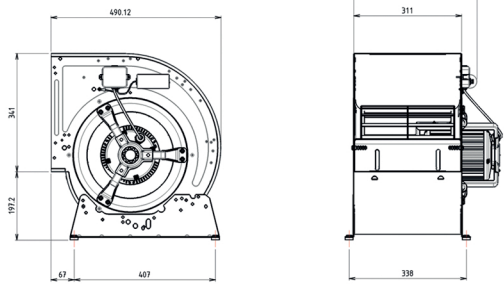
VMI 9/9-6 M



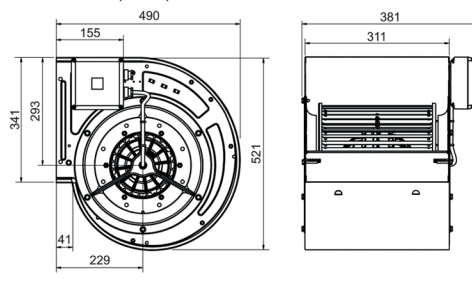
VMI 10/10-6 M



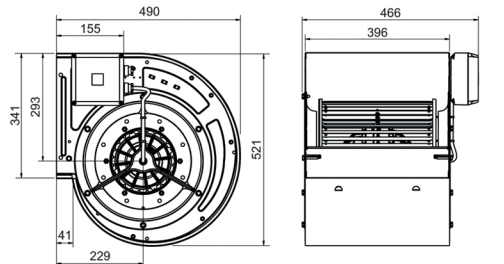
VMI 12/9-6 M



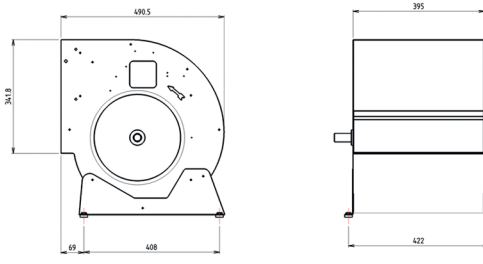
VMI 12/9-6 M (NEW)



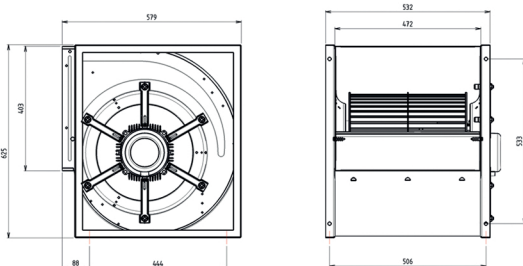
VMI 12/12-6 M



VMI 12/12-6 T



VMI 15/15-6 T



VMI 18/18-6 T

