



Plenum boxes type KTL CP

KTL plenumbox

Brand

- Ventichape

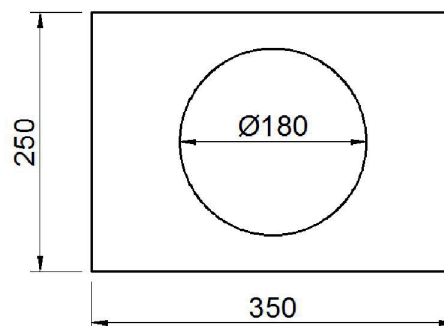
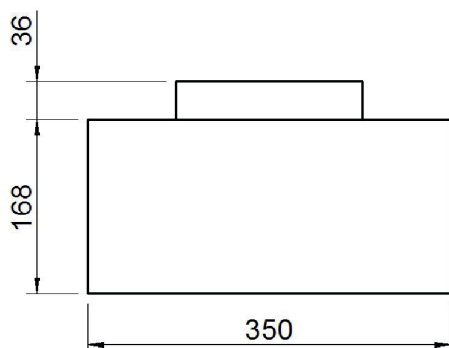
Application

- This plenum box with dimensions 350 x 168 x 250 mm (L x H x D) or 522 x 168 x 250 mm (L x H x D) can be used with several **DDCP** distribution plates depending on the air flow rate and the number of valves
- The connection for this plenum box is made from the ventilation unit with a spiralled duct with dia 180 mm; it is possible to make the distribution with flexible ducts depending on the distribution plate

Composition

- Rectangular plenum box made of KTL coated steel (5µm); thanks to this KTL coating, the plenum box is resistant to the corrosive elements of the cement screed (compression strength 80 kg/cm²)
- The KTL coating is also dust and moisture repellent, which makes it very appropriate for ventilation applications

■ KTL CP 350



■ KTL CP 522

