

Circular subcollectors type S-COL C

Sub collector for air valve

Brand

- Ventichape

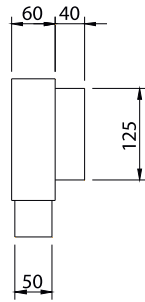
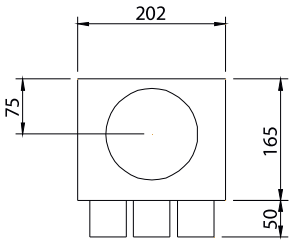
Application

- This subcollector makes the connection between the valve and the flexible pipes. All seams were glued inside so that this subcollector is airtight. An air conductor (Ø50) or a beveled corner (Ø63 / 70/90) was provided to avoid turbulences and reduce air resistance.
- Placement of the sub-collector: if the drilling has been carried out, the sub-collector with the spiral-bent channel, or a specially designed plastic connection tube **VB125 S-COL**, can be placed through the thickness of the concrete.

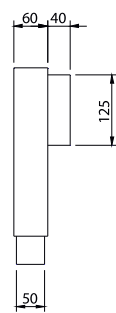
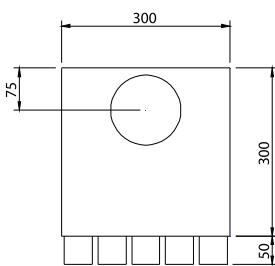
Composition

- Subcollector made from KTL coated steel (5µm); thanks to this KTL coating, the subcollector is resistant to the corrosive components of the screed and concrete
- The KTL coating is also dirt and dust repellent, making it ideal for ventilation applications

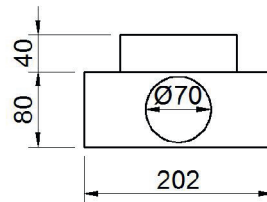
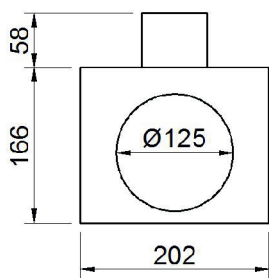
S-COL C 125/3x50



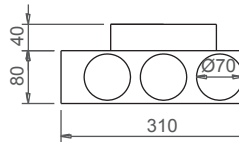
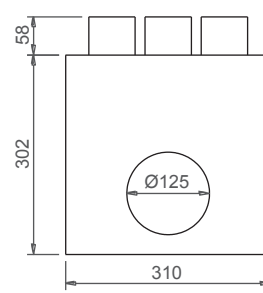
S-COL C 125/5x50



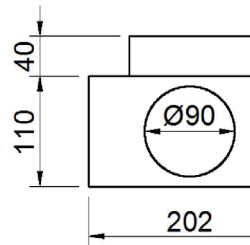
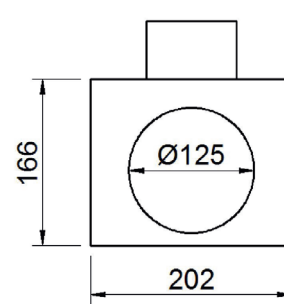
S-COL C 125/1x70



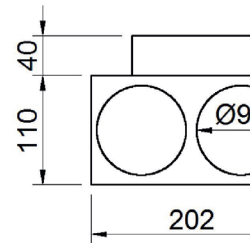
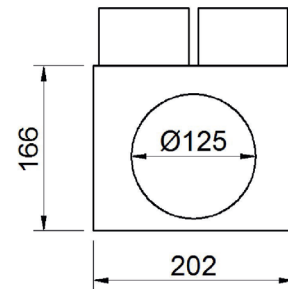
S-COL C 125/3x70



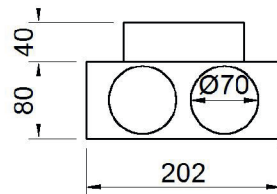
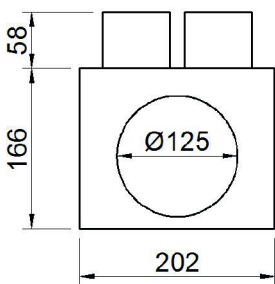
S-COL C 125/1x90



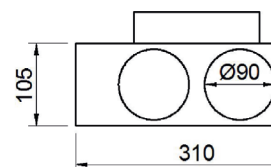
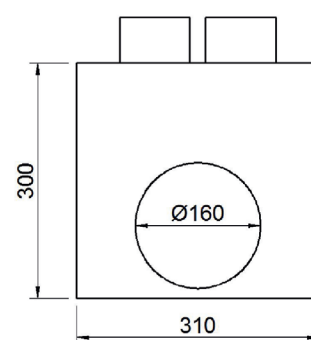
S-COL C 125/2x90



S-COL C 125/2x70



S-COL C 160/2x90



S-COL P 125/2x70

