

BRINK*Air for Life*

HRU system $D \leq 450 \text{ m}^3/\text{h}$ type RENOVENT EXCELLENT

Heat recovery units with counter-flow heat exchanger. The range consists of several types for air flow ranges from 100 to 450 m³/h.

Brand

- Brink

Application

- Ventilation with heat recovery for residential and non-residential applications
- Indoor mounting in a frost-free area

Composition

- Casing in prelacquered steel plate
- Round connections with diameter 125/160/180 mm
- Excellent 300 - 400 - 450: automatic 100% bypass
- Excellent 180 without bypass and electric pre-heater
- Condensation tray and drain with connexion dia 32 mm
- Inner casing in EPS foam for thermal and acoustic insulation
- The **Plus version** is a unit with extra regulation possibilities for several applications such as CO₂

Fan

- Single inlet centrifugal fan EBM Papst from the latest generation
- Direct driven EC-motor

Exchanger

- Static counter-flow heat exchanger made of plastic
- Efficiency: according to NBN EN 308 downloadable
- Complete and automatic bypass (only type 300 - 400 - 450)
- Intelligent anti-frost regulation with triac driven electrical pre-heater (only type 300 - 400 - 450)

Filter

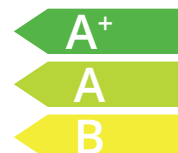
- Standard Renovent Excellent with two G3 filters

I.10

Heat recovery units

RENOVENT EXCELLENT

- Counterflow
- $Q_v \leq 450 \text{ m}^3/\text{h}$
- Vertical
- Heat recovery unit with efficiency $\geq 75\%$



Options

- **Renovent Excellent Plus:**

Certification

- The unit is tested according to NBN EN 308 (www.epbd.be)
- Passive house certificat

Accessories

- 4-positions switch with filter indication, type **CVREN 4**
- Replacement filters, type **FSREN**
- Enthalpy changer, type **WTW-H**
- RF remote control (4 positions) with receiver, type **RFREN**
- Regulating module with timer function, type **DCREN AC**
- Demand controlled ventilation, type **DCV**
- Stench trap, type **SIP 32**
- Electric post-heater, type **CVR-NE** (plus version)
- Humidity sensor, type **HRT REN**
- CO₂-sensor, type **CO2 REN E-BUS**
- Cable for Renovent, type **RJ12**
- Mounting chairs, type **MC**
- ModBus module, type **REN MODBUS**

Order example

RENOVENT EXCELLENT PLUS 400 R 4/0

Explanation

- **RENOVENT EXCELLENT** = type of heat recovery unit
- **400** = max airflow m³/h
- **R** = right configuration, L = left configuration
- **4/0** = 4 connections on top, 2/2 = 2 connections on top and 2 at the bottom
- **Plus** = version with extra regulation possibilities

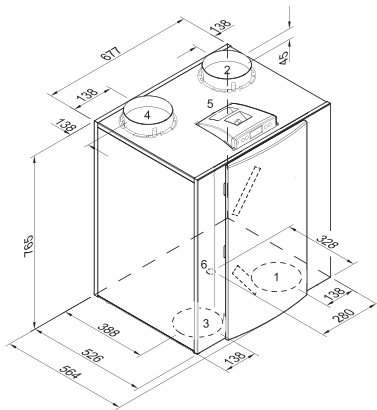
		Technical data			Lwa [dB(A)]		
		Q [m ³ /h]	P [W]	Lwa2	Lwa5	Lwa6	
Renovent Excellent 180	Vmin	50 @ 7-16Pa	16 - 18				
	V1	75 @ 18-40Pa	24 - 26	32	31	49	
	V2	100 @ 30-68Pa	30 - 42	39	37	56	
	V3	150 @ 60-150Pa	62-86	48	45,50	66	
	Vmax	180 @ 150Pa	116				
Renovent Excellent 300	Vmin	50 @ 3-7Pa	9 - 9,2				
	V1	100 @ 11-28Pa	13,7 - 15,2	30	33	44	
	V2	150 @ 26-66Pa	22 - 29,2	38	39	51	
	V3	225 @ 56-142Pa	46,8 - 66,2	44	45	60	
	Vmax	300 @ 150Pa	104	50	54	67	
Renovent Excellent 400	Vmin	50 @ 3-6Pa	8,60				
	V1	100 @ 6-20Pa	9,5 - 15	28,50	30,50	41,50	
	V2	200 @ 25 - 49Pa	29 - 40	39,50	45,50	56	
	V3	300 @ 56-178Pa	72 - 98	52	55,50	65	
	Vmax	400 @ 150Pa	166	53,50	58	69,50	
Renovent Excellent 450	Vmin	50 @ 2-5Pa	9,5				
	V1	100 @ 5-15Pa	11 - 18	29,5	31,5	42,5	
	V2	200 @ 20-60Pa	32 - 45	40,5	46,5	57	
	V3	300 @ 40-130Pa	80 - 105	51	56,5	66	
	V	400 @ 150Pa	170	54,5	59	70,5	
	Vmax	450 @ 100Pa	222	-	-	-	

Lwa2 = Sound power level environment

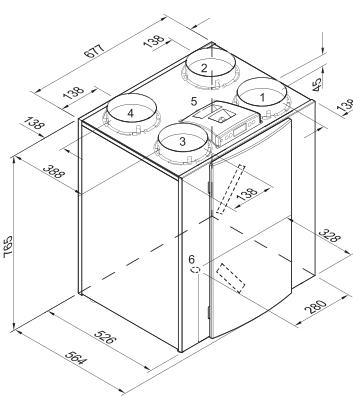
Lwa 5 = Sound power level @inlet

Lwa 6 = Sound power level @outlet

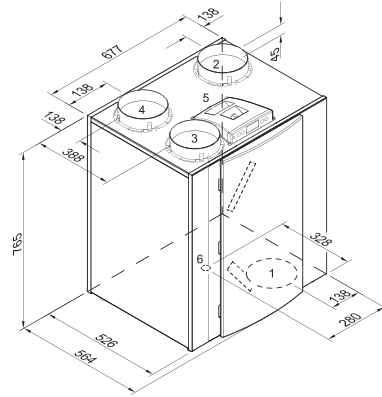
	Energy efficiency class		
	Manual	Sensors	Clock / sensor
Renovent Excellent 180	B	A	A
Renovent Excellent 300	A	A*	A
Renovent Excellent 400	A	A*	A
Renovent Excellent 450	A	A	A



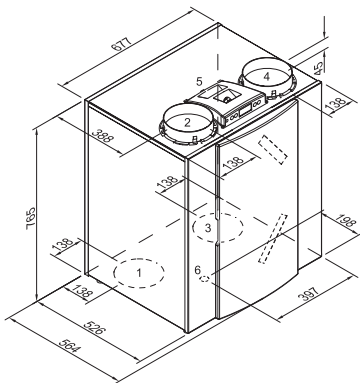
Renovent Excellent 300/400 L2/2



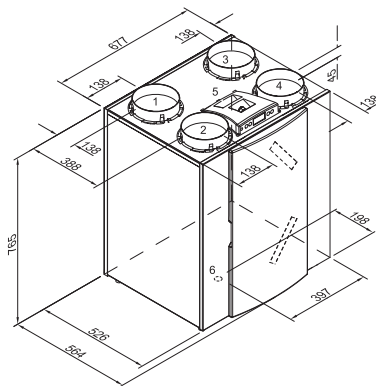
Renovent Excellent 300/400/450 L4/0



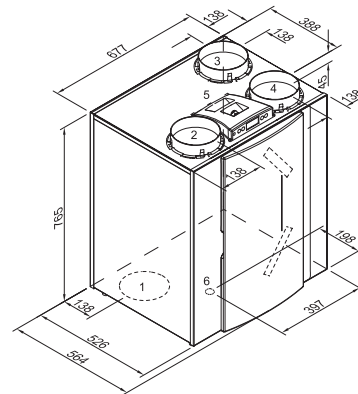
Renovent Excellent 300/400 L3/1



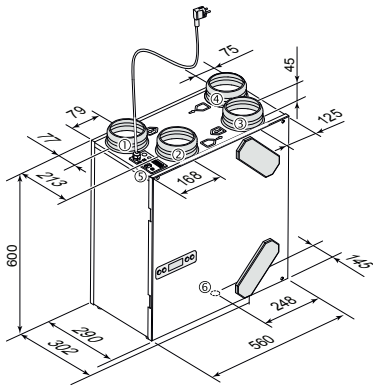
Renovent Excellent 300/400 R2/2



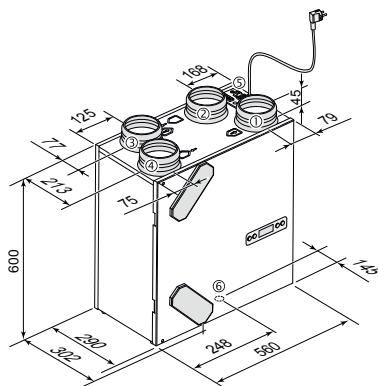
Renovent Excellent 300/400/450 R4/0



Renovent Excellent 300/400 R3/1



Renovent Excellent 180 R



Renovent Excellent 180 L

1: to the house 2: to outside 3: from the house
4: from outside 5: electrical connection 6: condensate drain

	Dimensions				
	H [mm]	B [mm]	D [mm]	Ø [mm]	[kg]
Renovent Excellent 180	600	560	302	125	25
Renovent Excellent 300	765	677	564	160	38
Renovent Excellent 400	765	677	564	180	38
Renovent Excellent 450	765	677	564	180	38