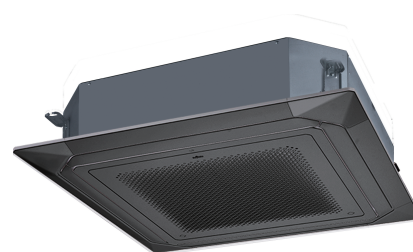
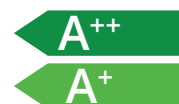
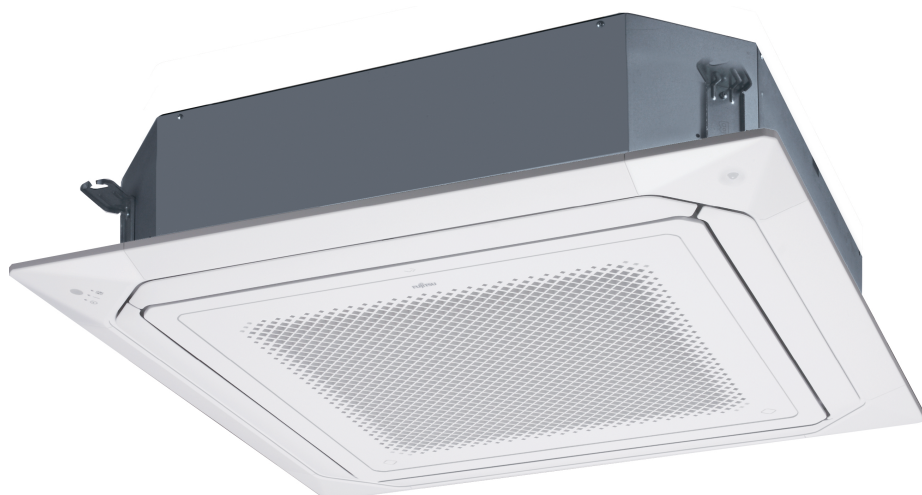


**AUXG KRLB
3ph**

- Fujitsu
- Mono-split
- Cassette type
- Indoor unit
- R32



Cassette models Fujitsu 3D 360° type AUXG KRLB 3ph

Brand

- Fujitsu - Airstage

Product

- Indoor unit split type, 3D cassette

Application

- Cooling and Heating offices, shops,...
- For areas between 50 and 150 m²

Function

- Heatpump air-air, inverter type

Refrigerant

- R32

Features

- 3D air diffusion
- Individual control of the 4 sides
- Economy mode
- Human sensor
- Auto changeover
- Auto restart
- Double swing
- Sleep timer
- Program timer
- Weekly timer
- Filter indication
- Set point limitation
- Fresh air connection

Applicable outdoor units

- Type **AOYG 36/45/54 KRTA**
- Type **AOEG 36/45/54 KRTA**

Accessories

- Touchscreen controller. Type **UTY-RNRYZ***
- Wired design controller. Type **UTY-RVNYM**
- Classic wired controller. Type **UTY-RLRY**
- Simple wired controller. Type **UTY-RSRY/UTY-RHRY**
- Infrared receiver and controller. Type **UTY-LBTYC**
- Decoration panel.
 - White with controller. Type **UTG-UKYA-W (with UTY-RNRYZ*)**
 - White without controller. Type **UTG-UKYC-W**

- Black. Type **UTG-UKYA-B**
- Human sensor. Type **UTY-SHZXC**
- External in- and output pcb. Type **UTY-XCSX**
- Casing for pcb. Type **UTZ-GXRA**
- Cables for external indication. Type **UTY-XWZXZG**
- Fresh air kit. Type **UTZ-VXRA**
- Shutter plate. Type **UTR-YDZK**
- Wide panel. Type **UTG-AKXA-W**
- Panel space kit. Type **UTG-BKXA-W**
- KNX converter. Type **UTY-VKSX**

Dimensions

