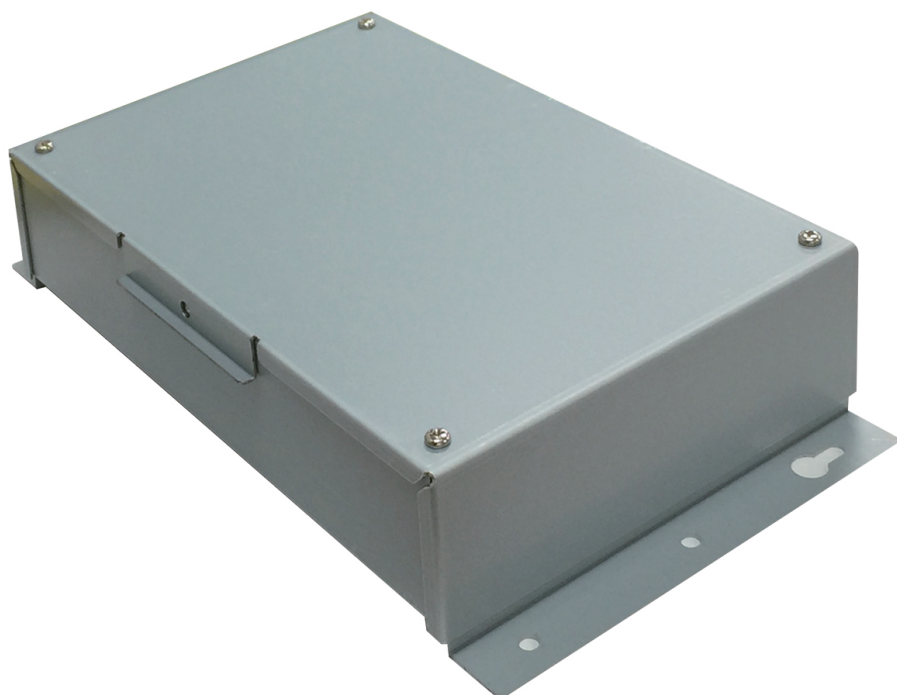


- Fujitsu
- VRF Airstage
- Accessories
- WIFI/KNX/Modbus converter



Accessories VRF - Modbus Convertor type UTY-VMGX

Brand

- Fujitsu

Product

- Modbus convertor

Application

- The solution for integrating VRF systems into small and medium sized buildings by modbus method

Function

- VRF System can be integrated with the Building management system supported by Modbus
- Max. 128 indoor units / max. 100 outdoor units

Applicable indoor units

- All indoor units of VRF JII-S/JII/JIII/JIII-L/VII/VIII/VRII serie

Installation example

