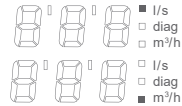
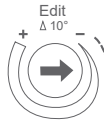
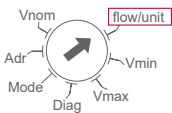
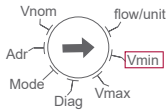


1. SÉLECTION UNITÉ DE MESURE



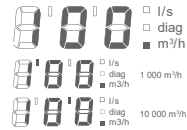
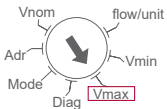
2. RÉGLAGE V_{\min}



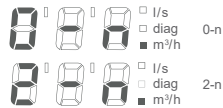
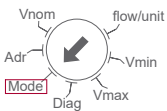
exemple: $V_{\min} = 200 \text{ m}^3/\text{h}$



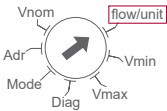
3. RÉGLAGE V_{\max}



4. SIGNAL DE RÉGLAGE

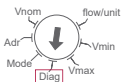


LECTURE



débit (m^3/h)

exemple: $250 \text{ m}^3/\text{h}$



I/s
 diag
 m^3/h

Arrêt
 Mode teste non activé.
 Réglage servomoteur selon
 signal externe Y

I/s
 diag
 m^3/h

CL(ose)
 ferme le clapet

I/s
 diag
 m^3/h

Marche
 Mode teste activé.
 Le servomoteur reste dans la
 position actuelle

I/s
 diag
 m^3/h

Lo(w)
 réglage forcé V_{\min}

I/s
 diag
 m^3/h

oP(en)
 ouvre le clapet

I/s
 diag
 m^3/h

Hi(gh)
 réglage forcé V_{\max}